


**IMPROVE YOUR SKILLS**
**YOU WILL NEED**

- King Cole Merino Blend DK, (100% wool, 50g/104m):  
1 ball of **Yarn A** Irish Navy (52),  
2 balls of **Yarn B** Slate Blue (96)

- A pair of 3.25mm needles  
**For yarn stockists contact**  
**King Cole 01756 703670**  
**www.kingcole.com**

**TENSION**

30 sts and 30 rows to measure  
10x10cm (4x4in) over patt using  
3.25mm needles

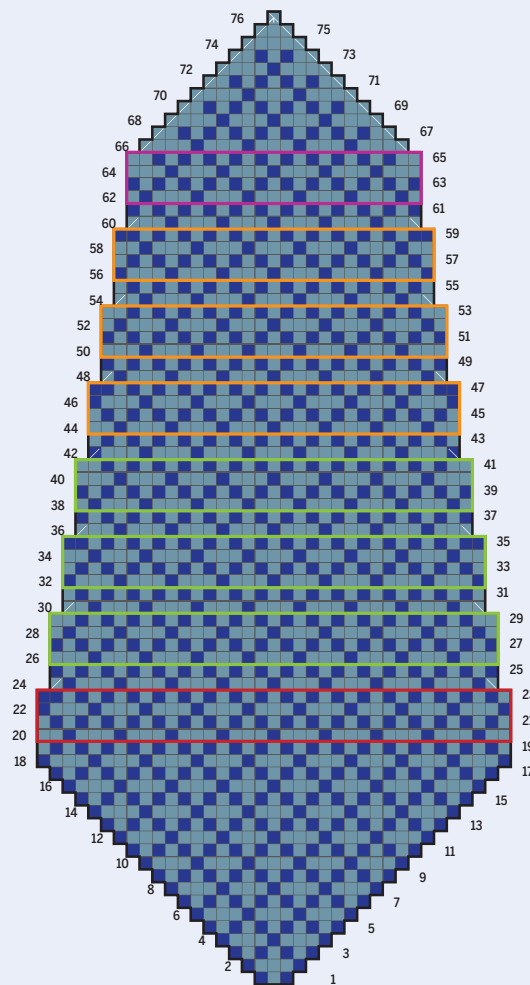
**MEASUREMENTS**

**Width at widest point** 7cm (2¾in)  
**Width at narrowest point** 4cm  
(1½in)  
**Length** 147.5cm (58in)

**ABBREVIATIONS**

Find a full list at  
Gathered.how

**gathered.**

**CHART**

**KEY**

- Yarn A
- Yarn B
- or ■ K2tog tbl on RS; P2tog tbl on WS
- or ■ K2tog on RS; P2tog on WS
- sl1, k2tog, pss0
- Rep these 4 rows 5 times
- Rep these 4 rows 4 times
- Rep these 4 rows 3 times
- Rep these 4 rows until work meas 141.5cm from centre front.

**HOW TO USE OUR CHARTS**

Start at the bottom right-hand corner. Read right side rows from right to left and wrong side rows from left to right. A row of squares represents a row of knitting.


**FAIR ISLE TIE**

**Note** To ensure that the pattern remains consistent, be sure to always hold Yarn B above Yarn A, and Yarn A under Yarn B. This will ensure that the colour dominance remains the same throughout the tie. Increases are worked by knitting into the front and then back of the same stitch on knit rows, using a different colour for each leg of the stitch; and by purling into the back and then front of the same stitch on purl rows, again using a different colour for each leg of the stitch. Working increases in this way keeps the continuity of the pattern correct.

**Cast on** 2 sts using 3.25mm needles and Yarn A.

**Row 1 (RS)** K1 in the front of the first st in Yarn A, do not take the stitch off the needle, K1 in the back of the same stitch using Yarn B, take both sts off the needle, K1 in Yarn A. [3 sts]

**Row 2** P1 in the back of the first st in Yarn A, do not take the stitch off the needle, P1 in the front of the same stitch using Yarn B, P1 in Yarn B, P1 in the back of the first st in Yarn B, do not take the stitch off the needle, P1 in front of the same stitch in Yarn A, take both stitches off the needle. [5 sts]

**Row 3** Work as for third row of Chart A, working increases in first and last sts as in Row 1. [7 sts]

Continue to follow Chart A, working any increases by either working kfb or pfb as worked in Rows 1 and 2, using the colours as set in the chart.

**Cast off** by working the final row as sl1, k2tog, pss0.

**MAKING UP**

Join the main seam. Making sure that the main seam is central, block gently, following any instructions on the ball band. [🌐](#)



The Fair Isle in this tie pattern creates a robust fabric which holds its shape well