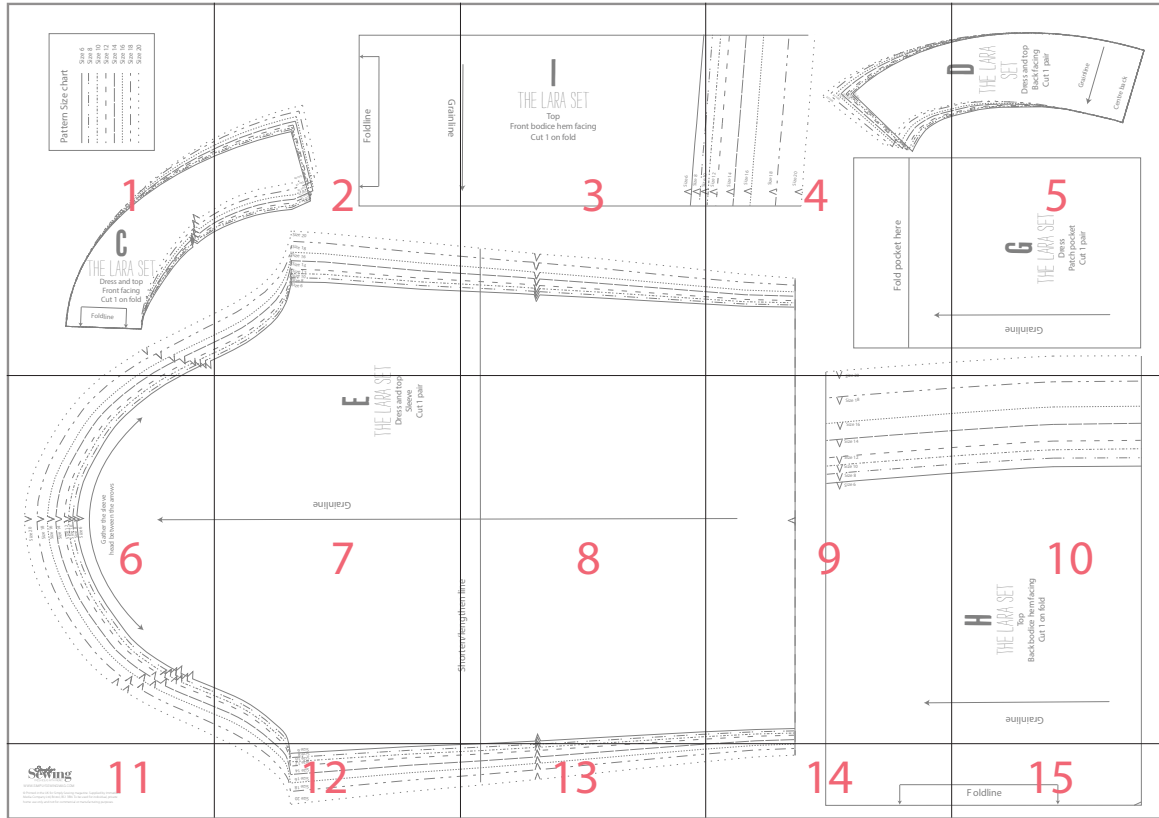


THE LARA SET

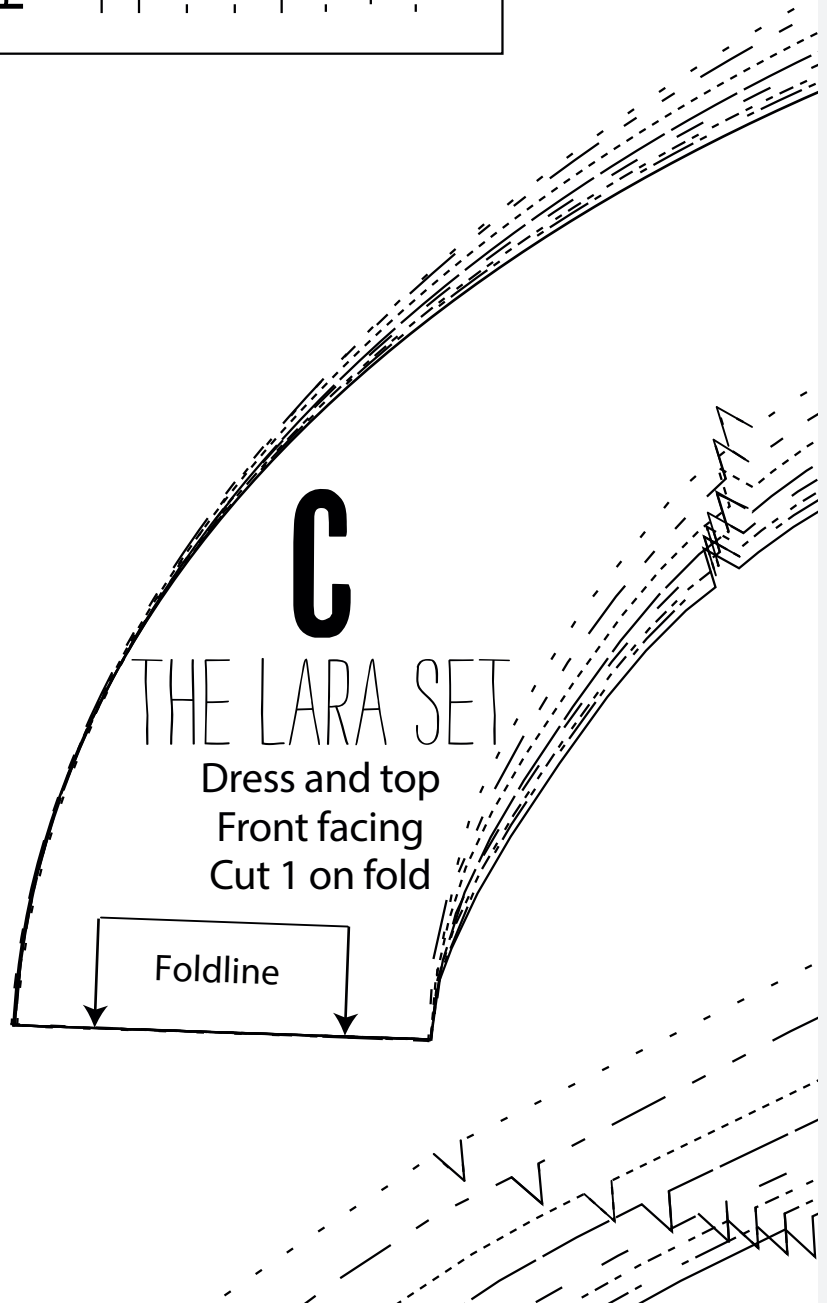
HOW TO PRINT THIS PATTERN

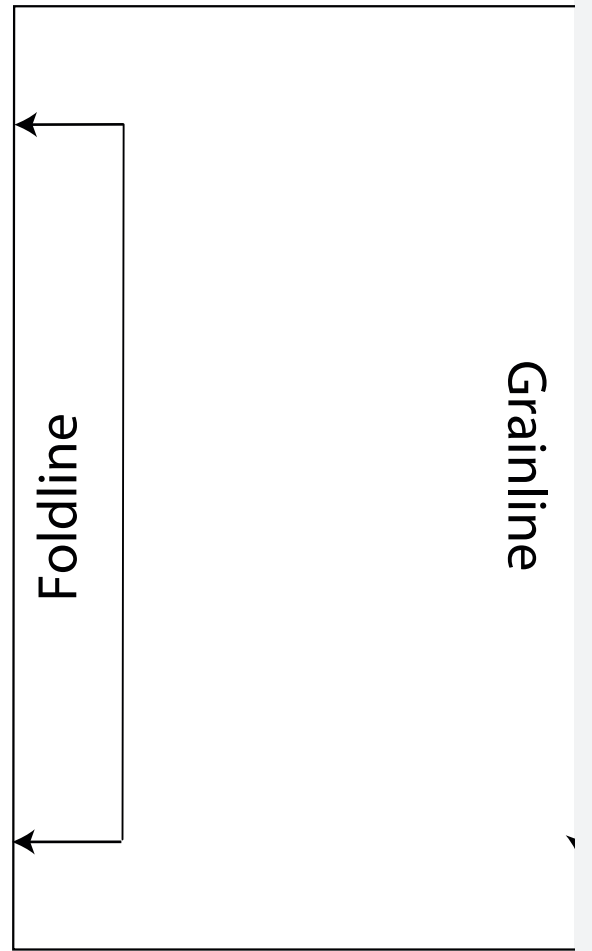
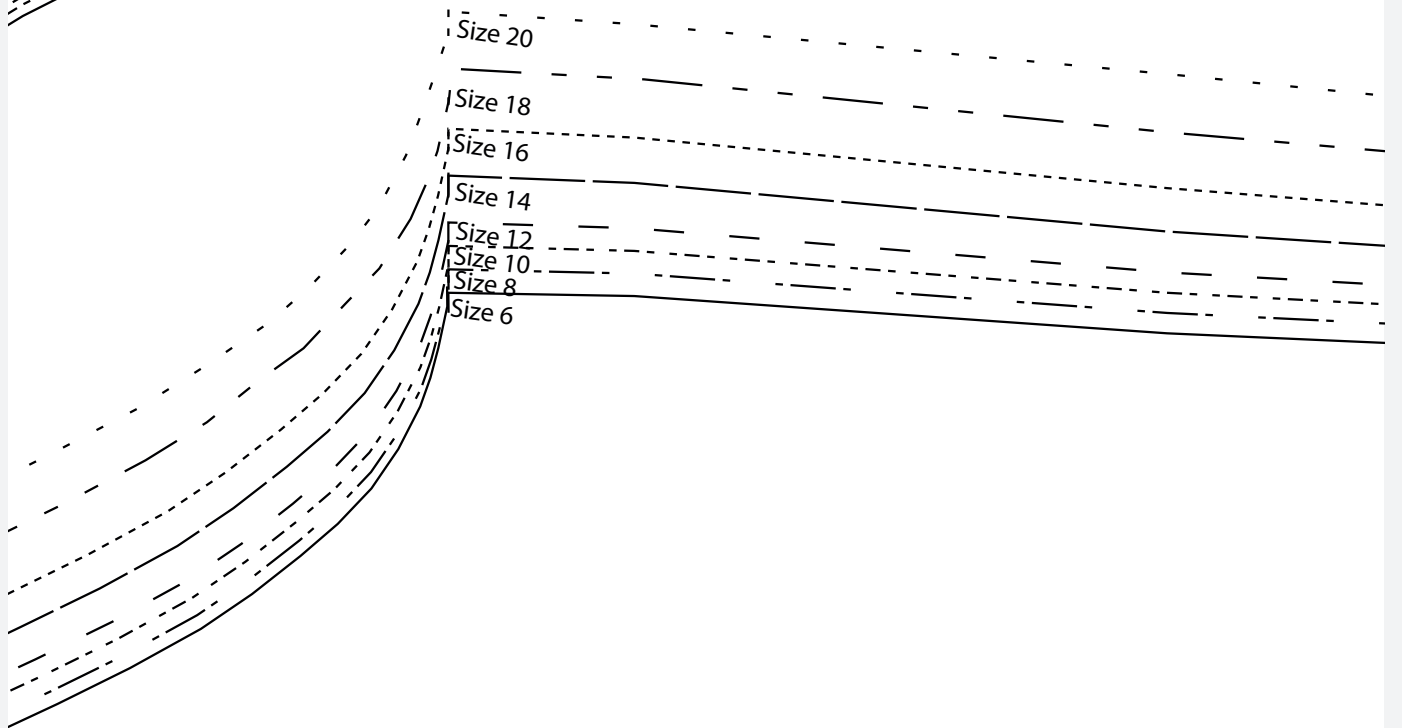
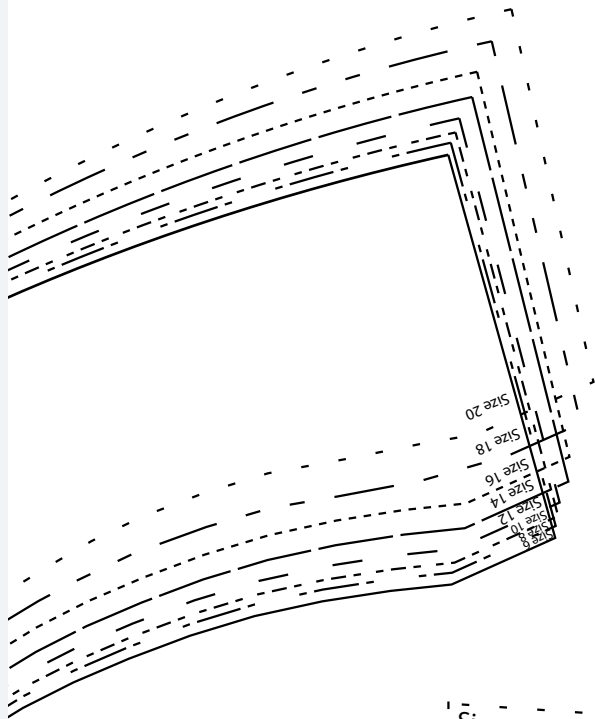
Print out this 15-page PDF on to A4 paper. Trim away the shaded border from each page and position the pages as below to assemble the pattern...



Pattern Size chart

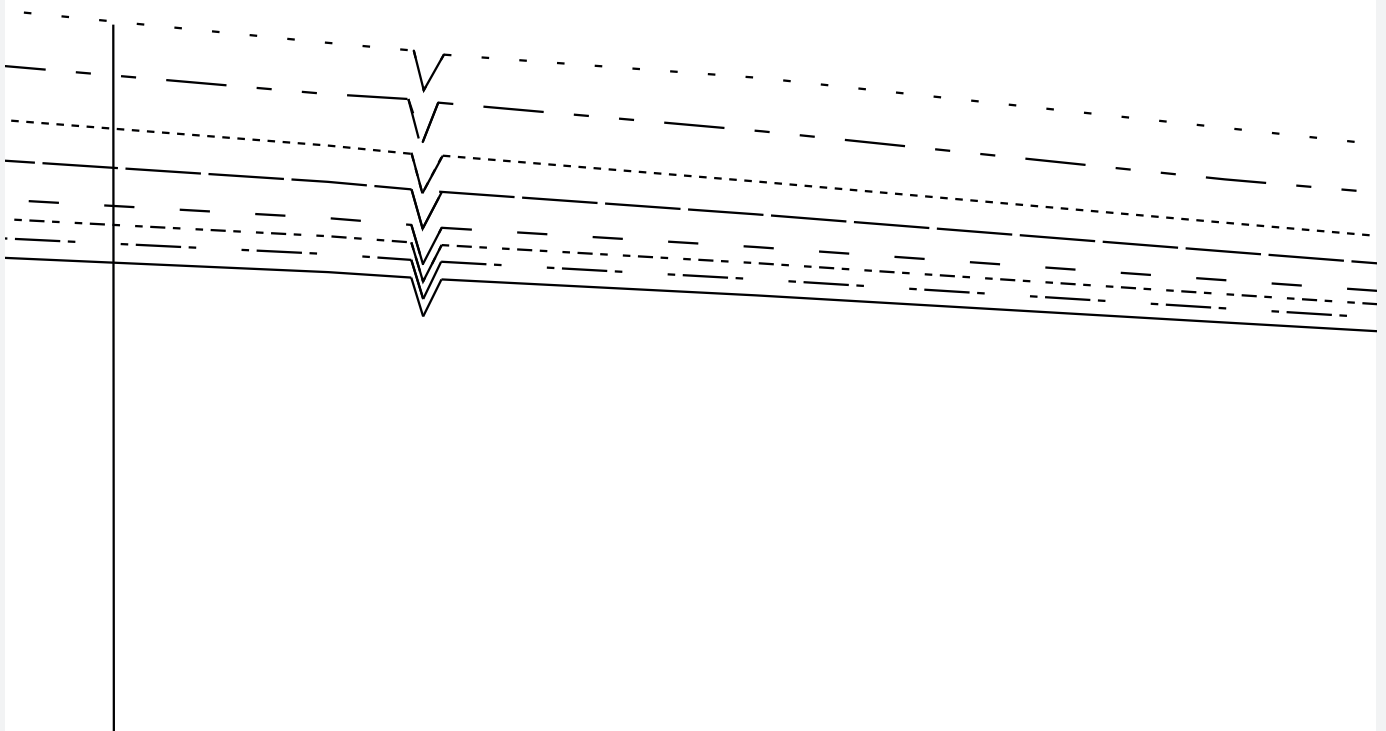
Size 6	—
Size 8	- - - -
Size 10	- - - -
Size 12	- - - -
Size 14	—
Size 16	- - - -
Size 18	- - - -
Size 20	- - - -

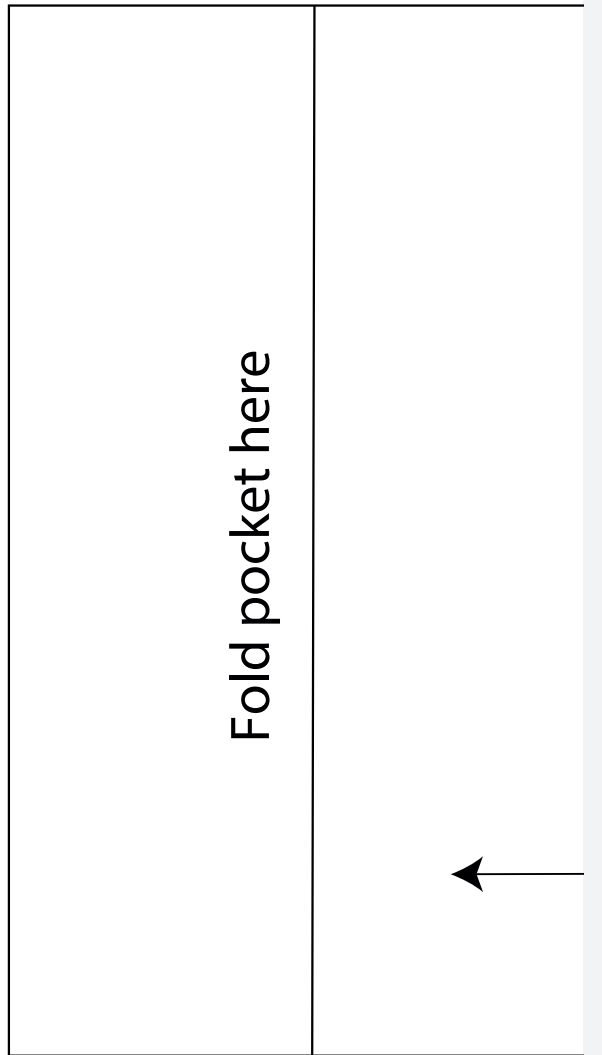
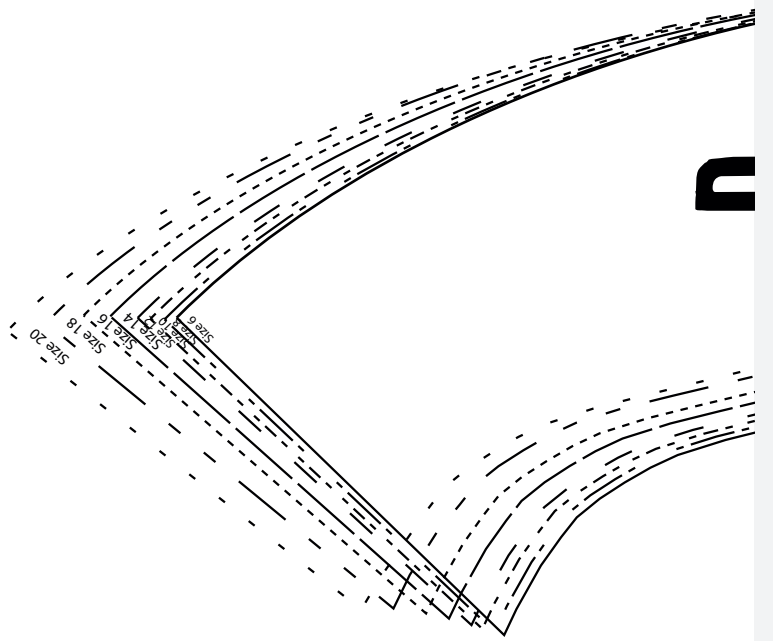
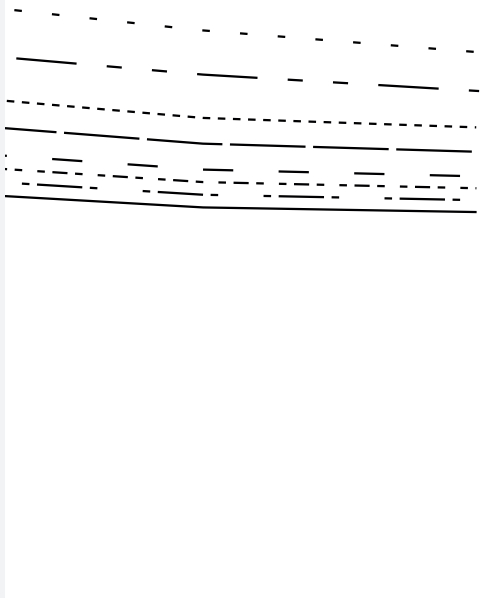
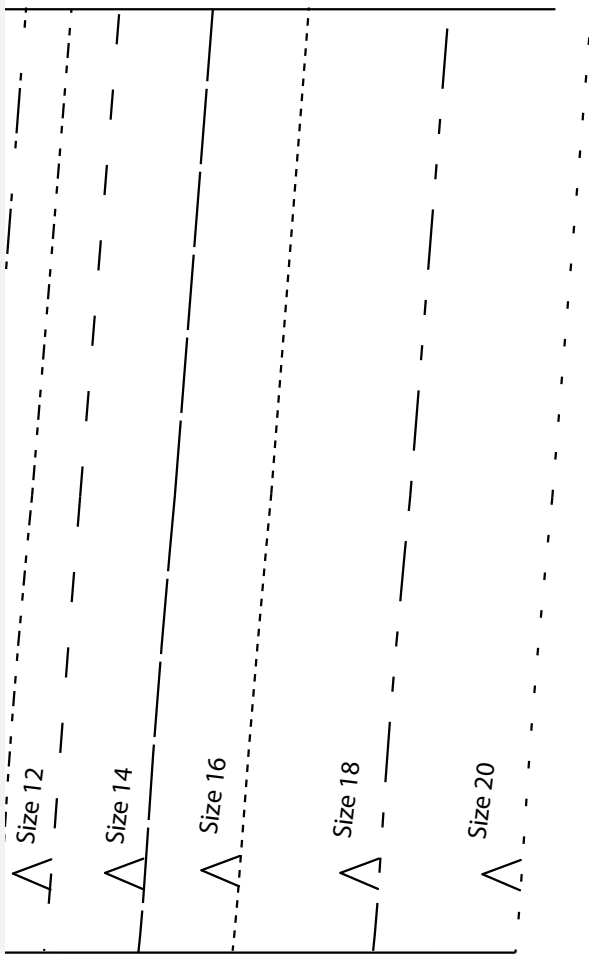




I
THE LARA SET
Top
Front bodice hem facing
Cut 1 on fold

Size 6
Size 8
Size 10





Size 20

Grainline

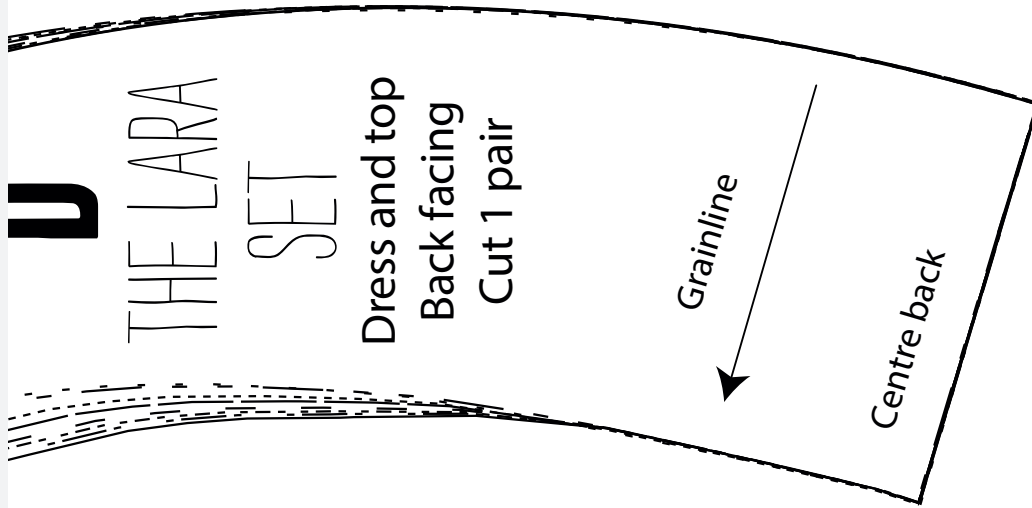
G

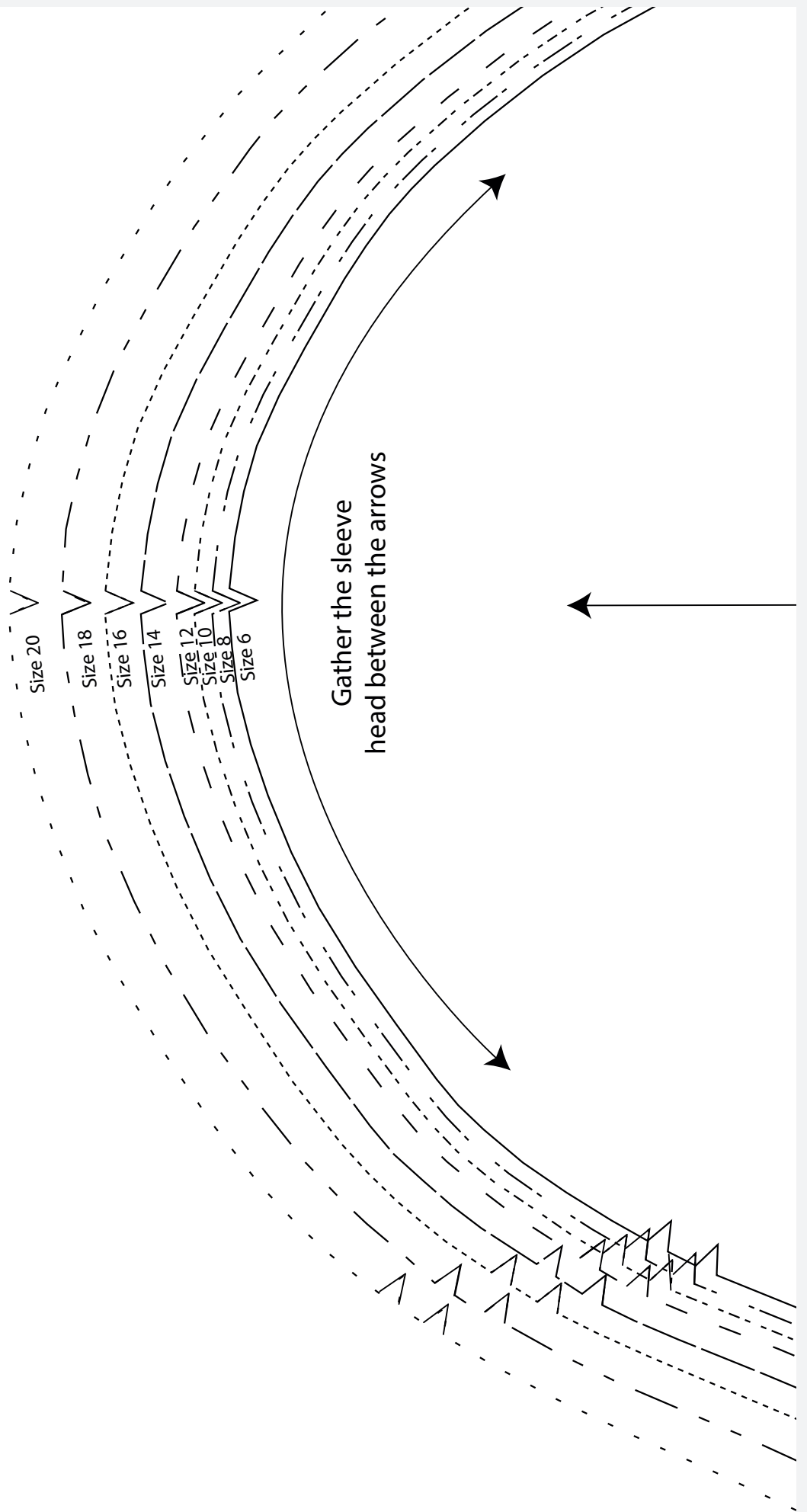
THE LARA SET

Dress

Patch pocket

Cut 1 pair





E

THE LARA S

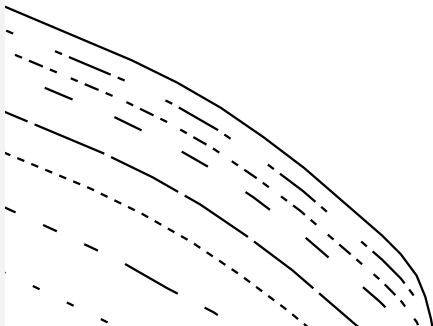
Dress and top

Sleeve

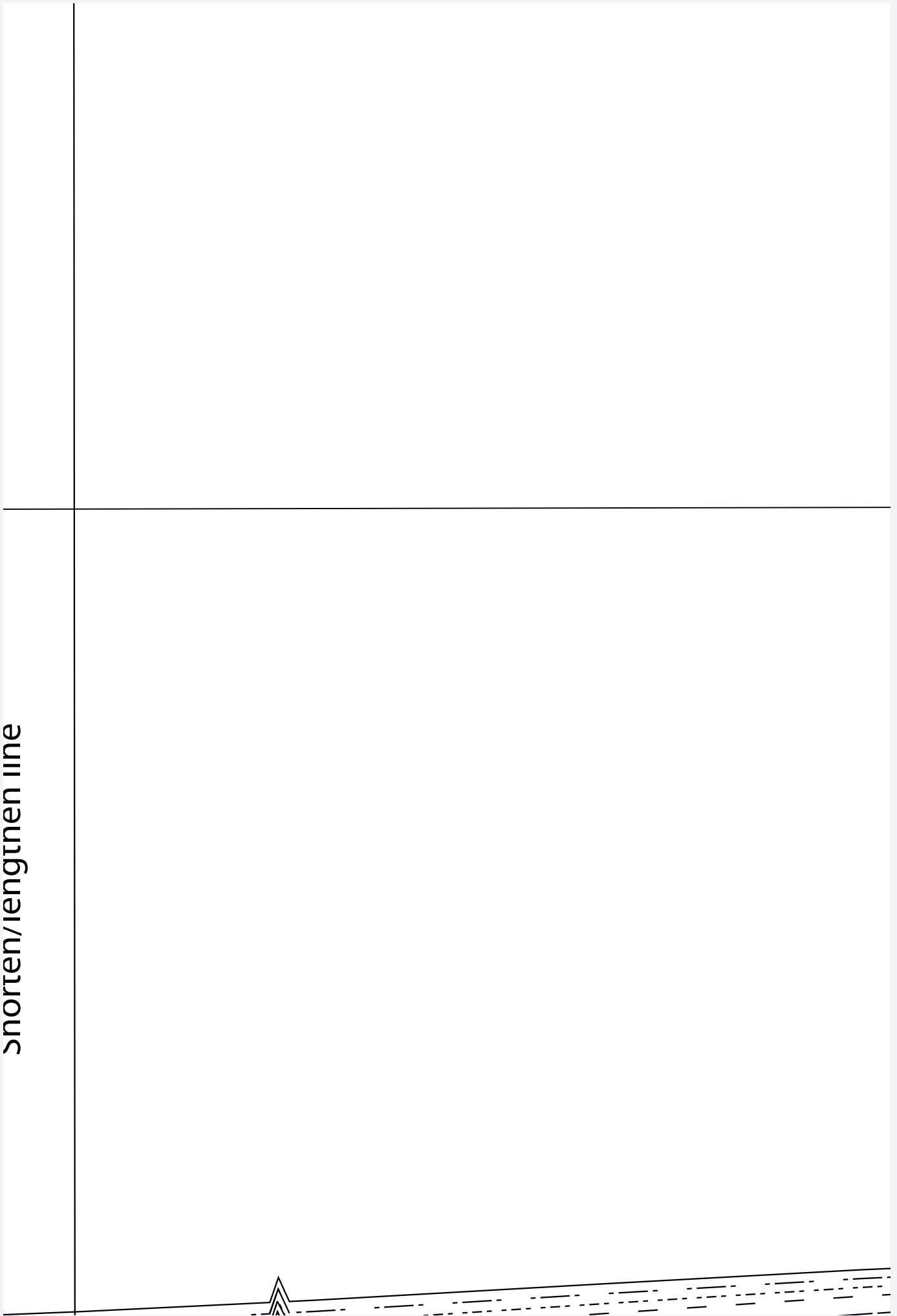
Cut 1 pair

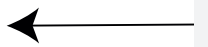
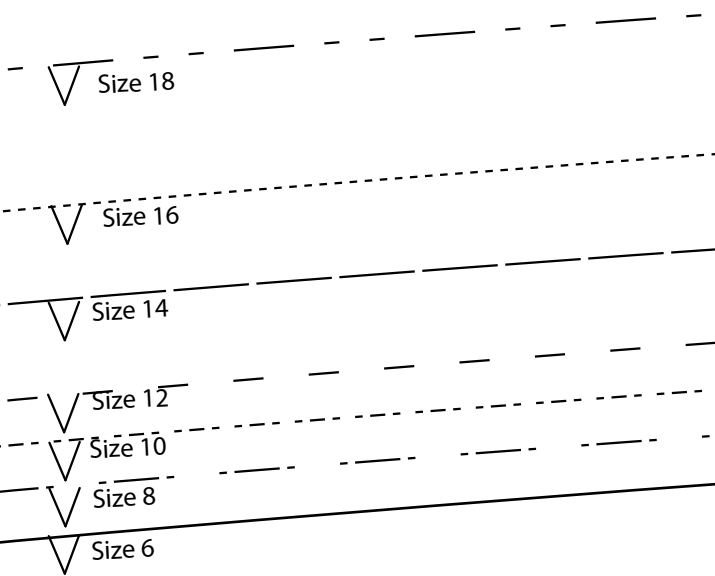
Grainline

Copyright © 2014 by The McGraw-Hill Companies



snorten/lengtnen iine





H

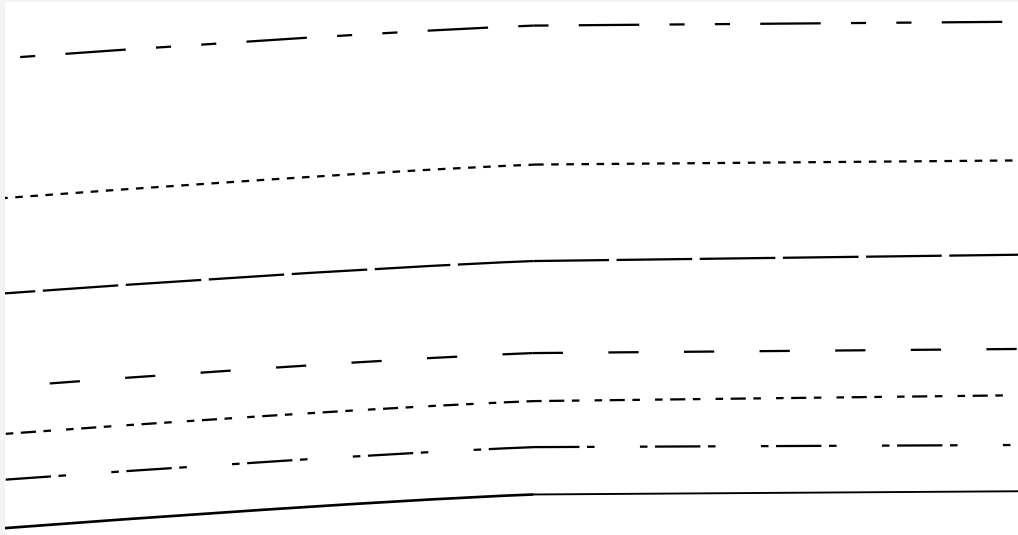
THE LARA SET

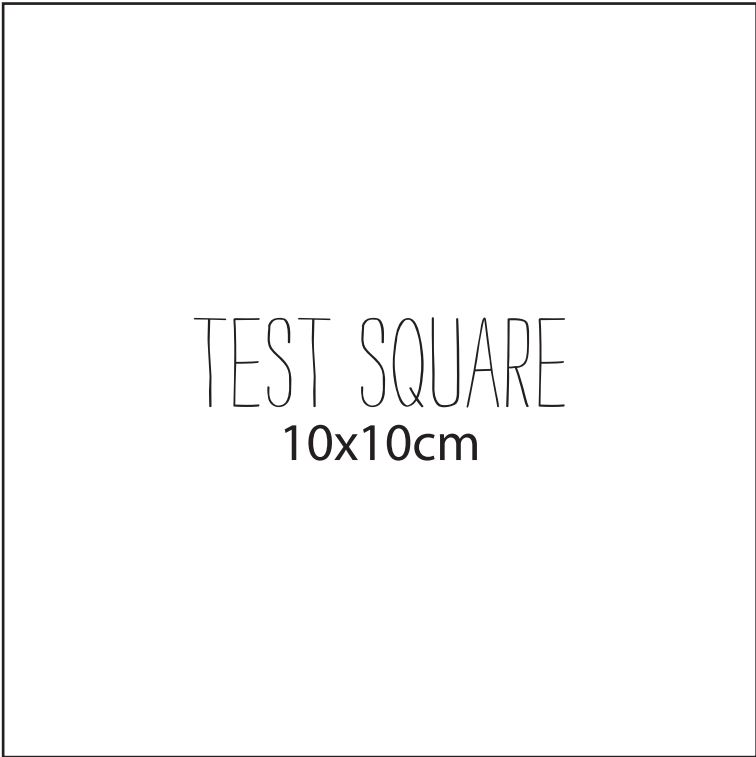
Top

Back bodice hem facing

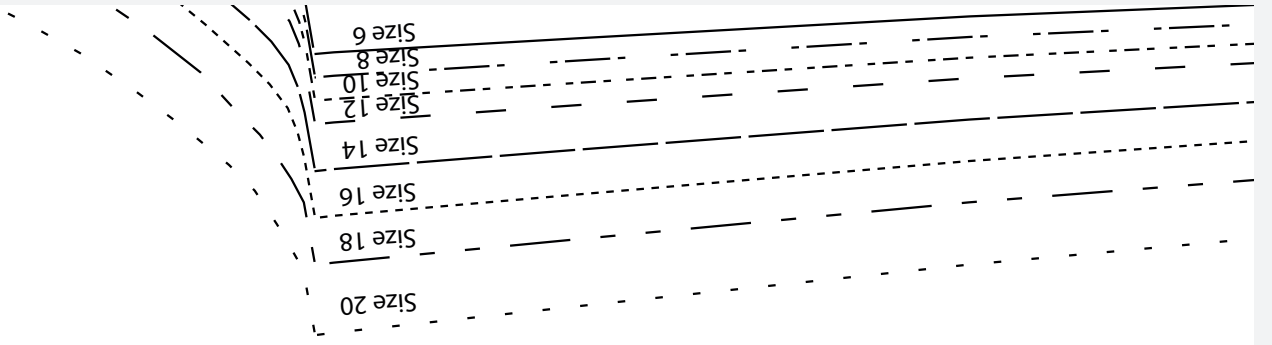
Cut 1 on fold

Grainline

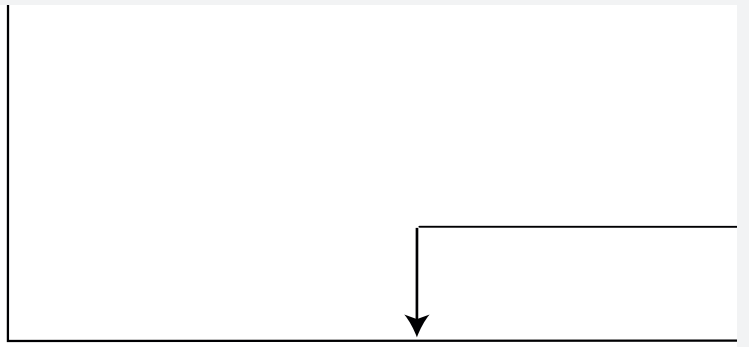
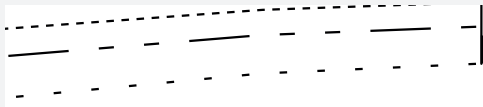




TEST SQUARE
10x10cm







Foldline

A diagram showing a horizontal line with a vertical line extending downwards from its center, ending in a downward-pointing arrowhead. The word "Foldline" is written to the left of the horizontal line. The diagram is positioned in the upper left quadrant of the page.