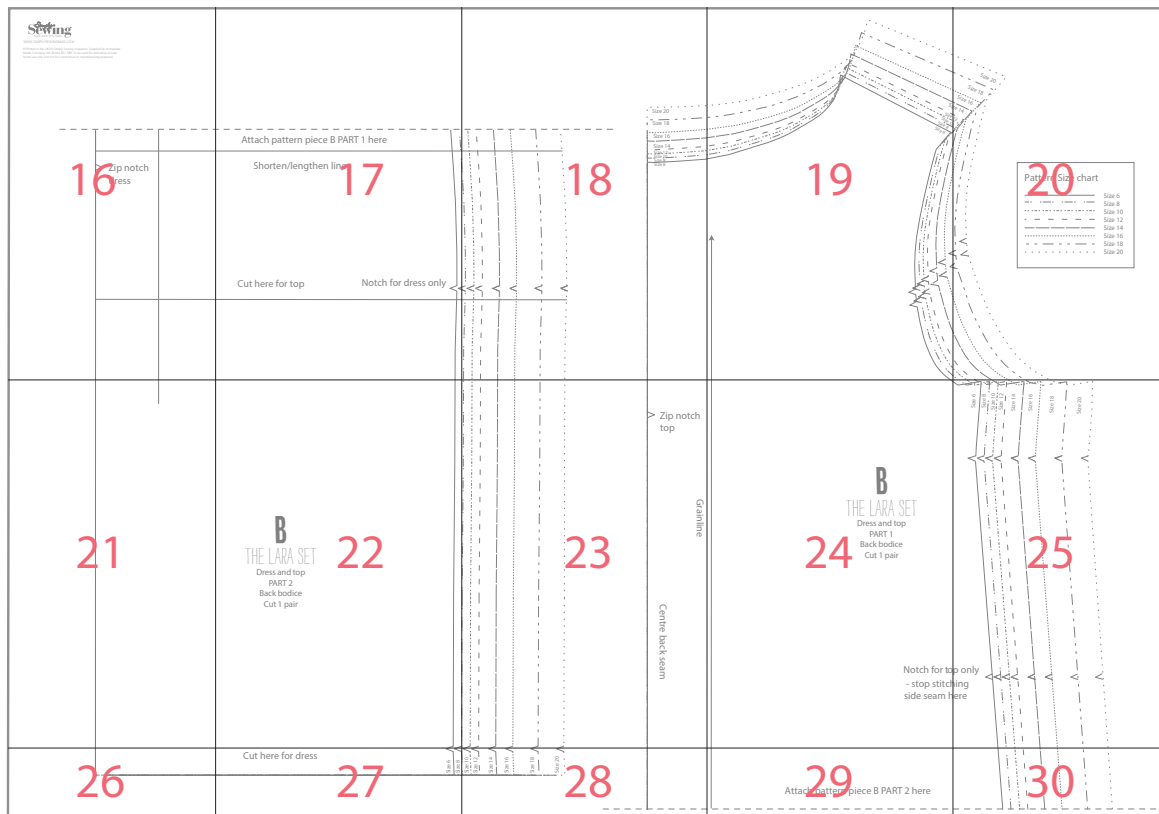
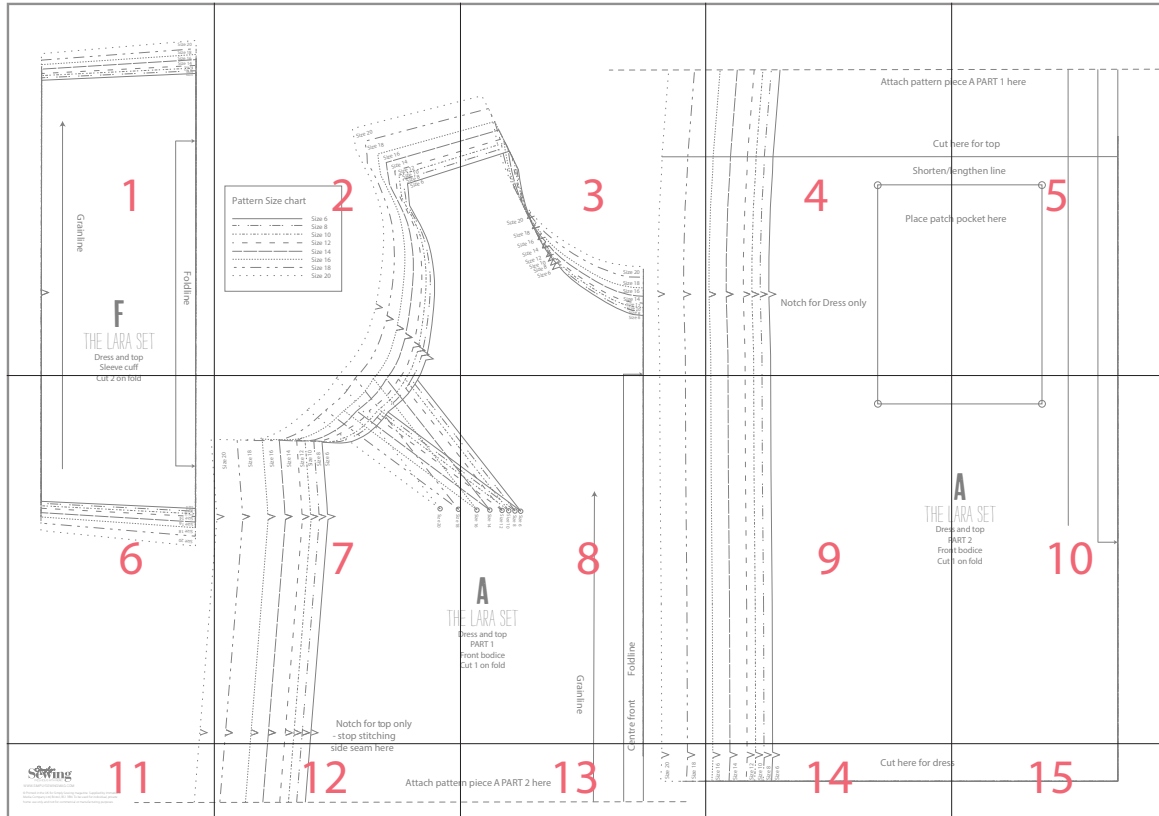
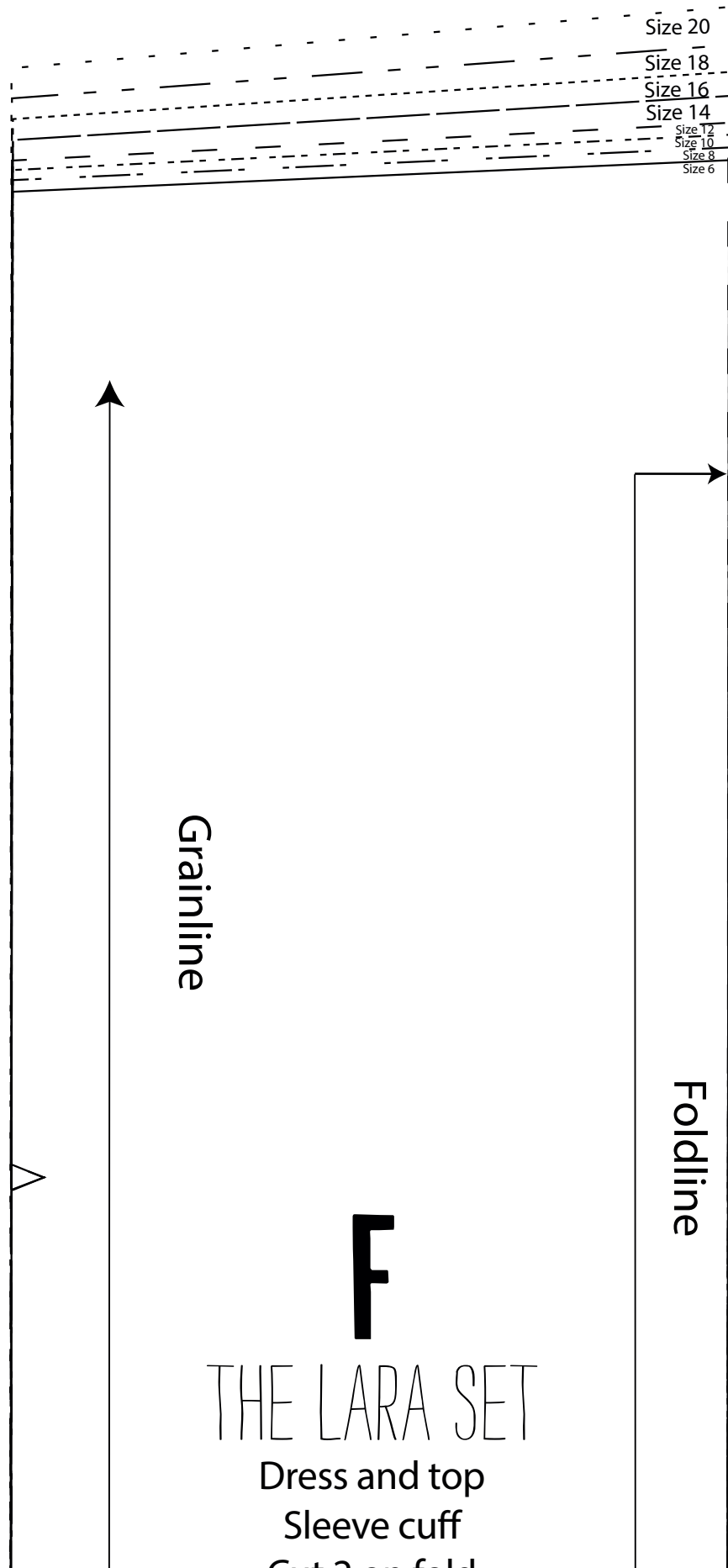


THE LARA SET

HOW TO PRINT THIS PATTERN

Print out this 30-page PDF on to A4 paper. Trim away the shaded border from each page and position the pages as below to assemble the pattern...





Size 20
 Size 18
 Size 16
 Size 14
 Size 12
 Size 10
 Size 8
 Size 6

Grainline

Foldline

F

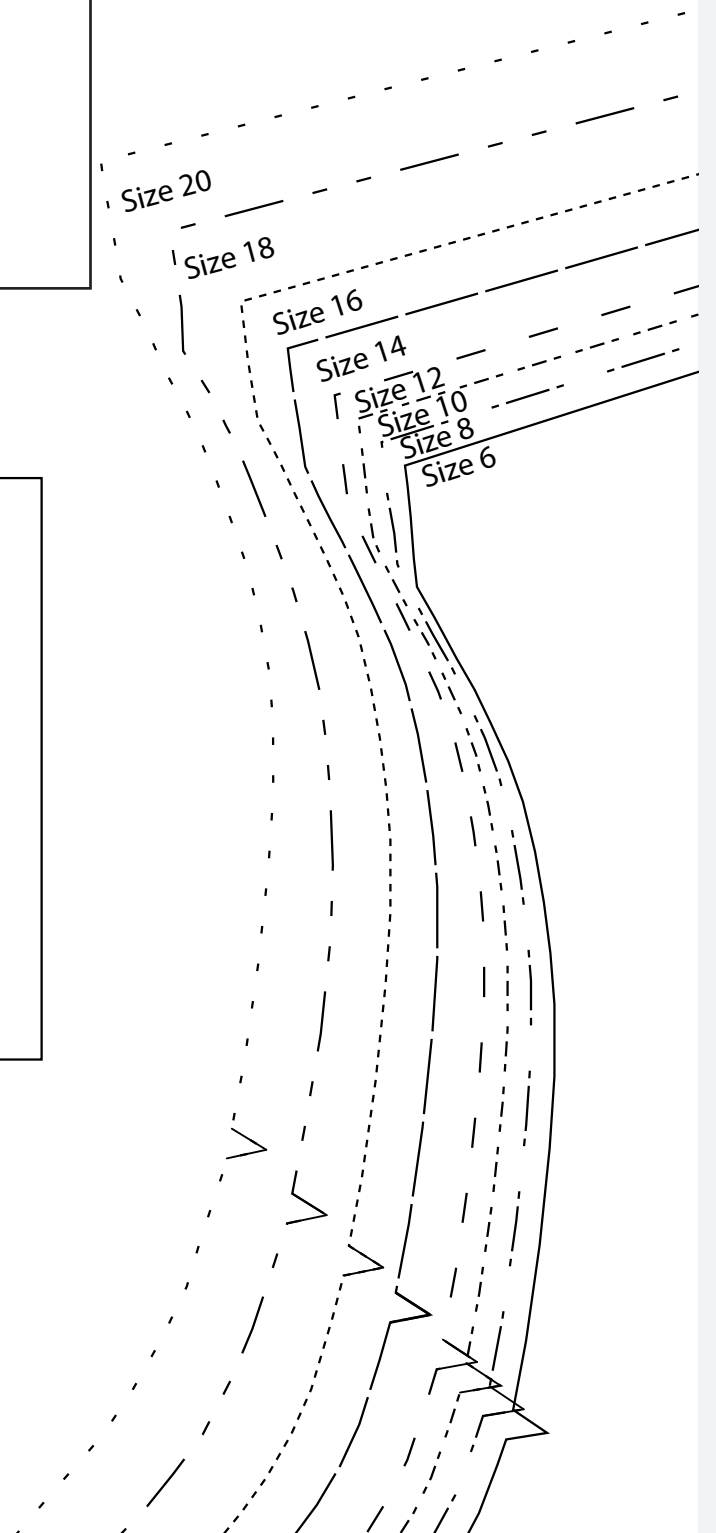
THE LARA SET

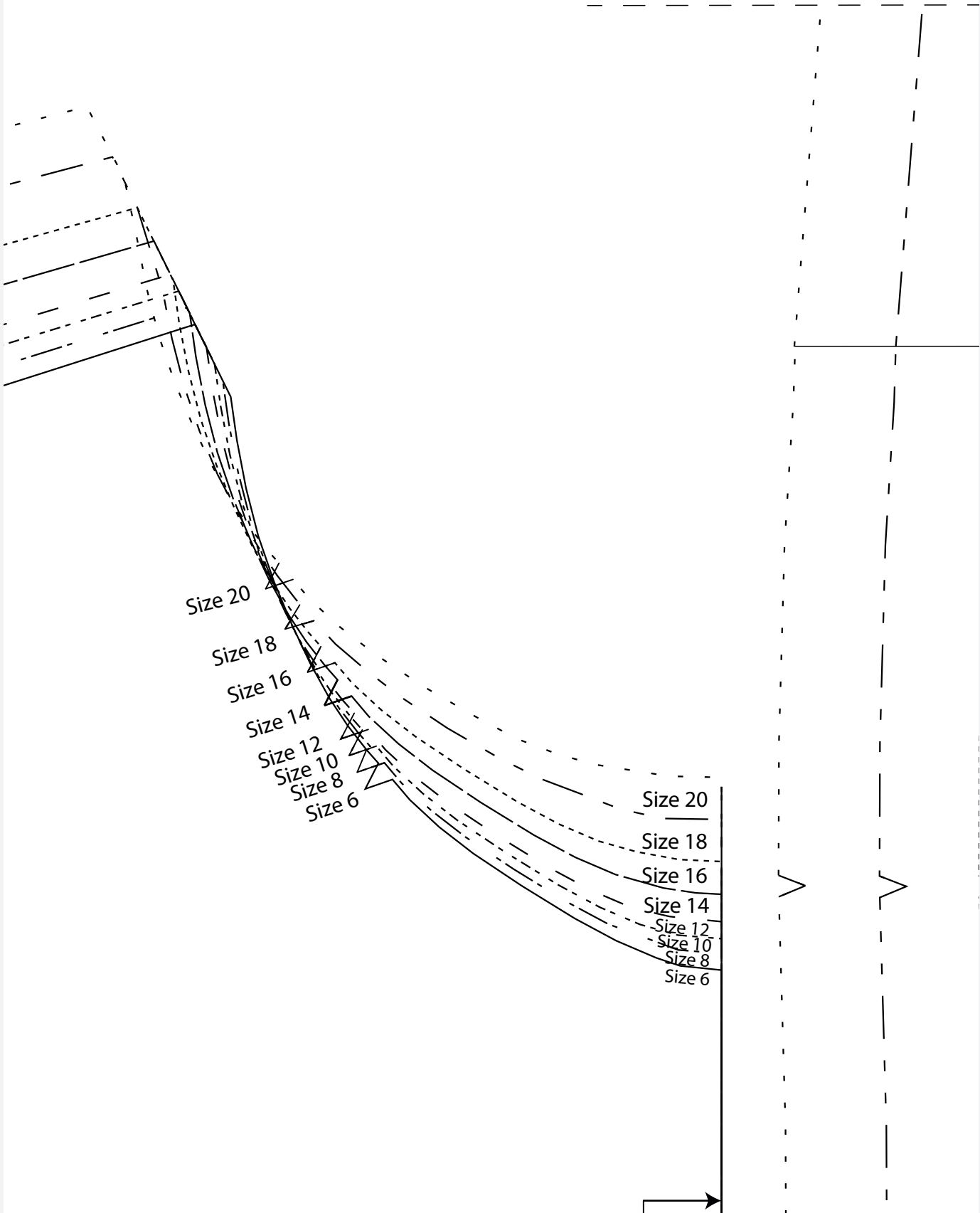
Dress and top
 Sleeve cuff
 Cut 2 on fold

TEST SQUARE
10x10cm

Pattern Size chart

—————	Size 6
- - - - -	Size 8
.....	Size 10
- - - - -	Size 12
—————	Size 14
.....	Size 16
- - - - -	Size 18
.....	Size 20





Attach pattern piece

Cut here

Shorten/lengthen

Place patch piece

Notch for Dress only

ce A PART 1 here

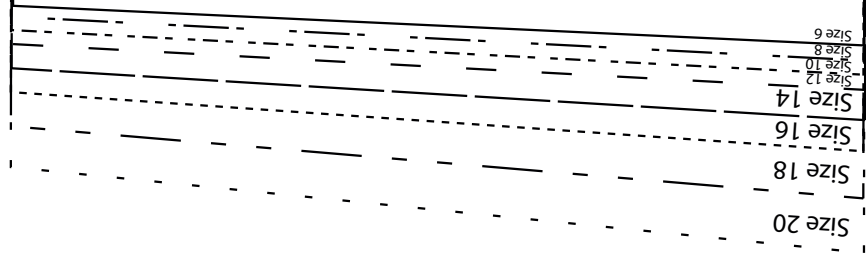
ere for top

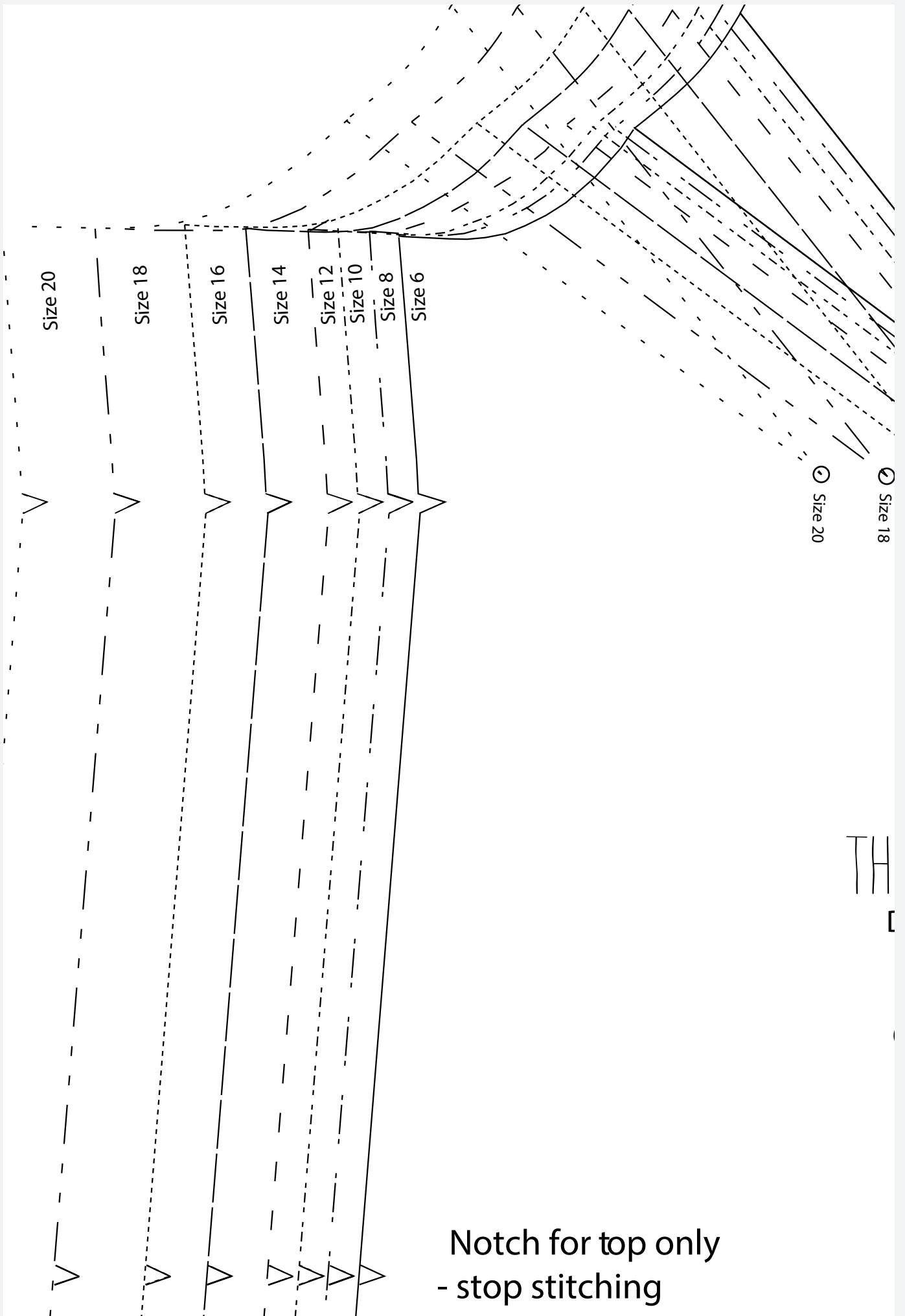
ngthen line

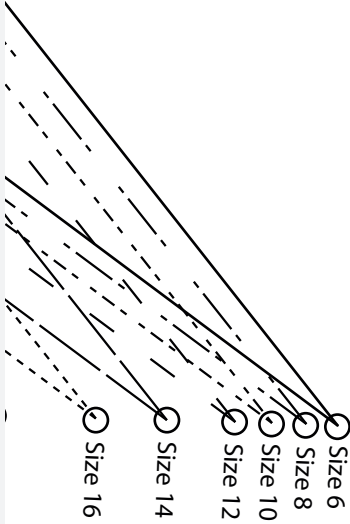
pocket here



Cut 2 on fold







A

E LARA SET

Dress and top

PART 1

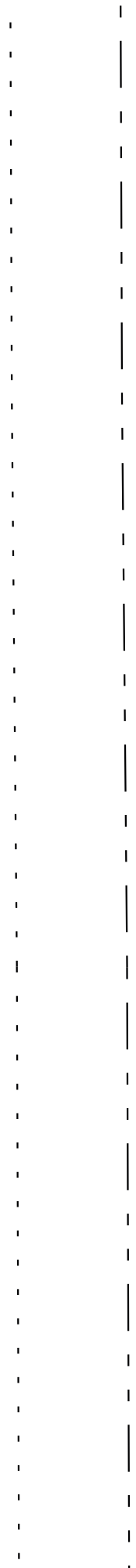
Front bodice

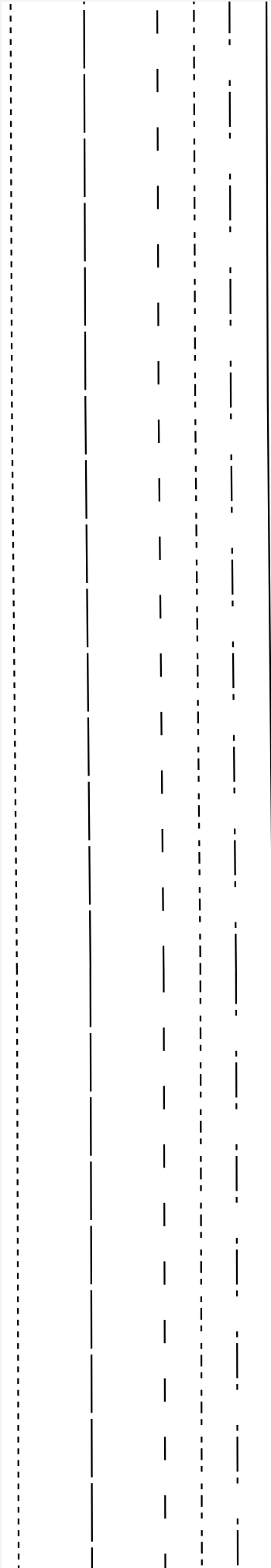
Cut 1 on fold

Grainline

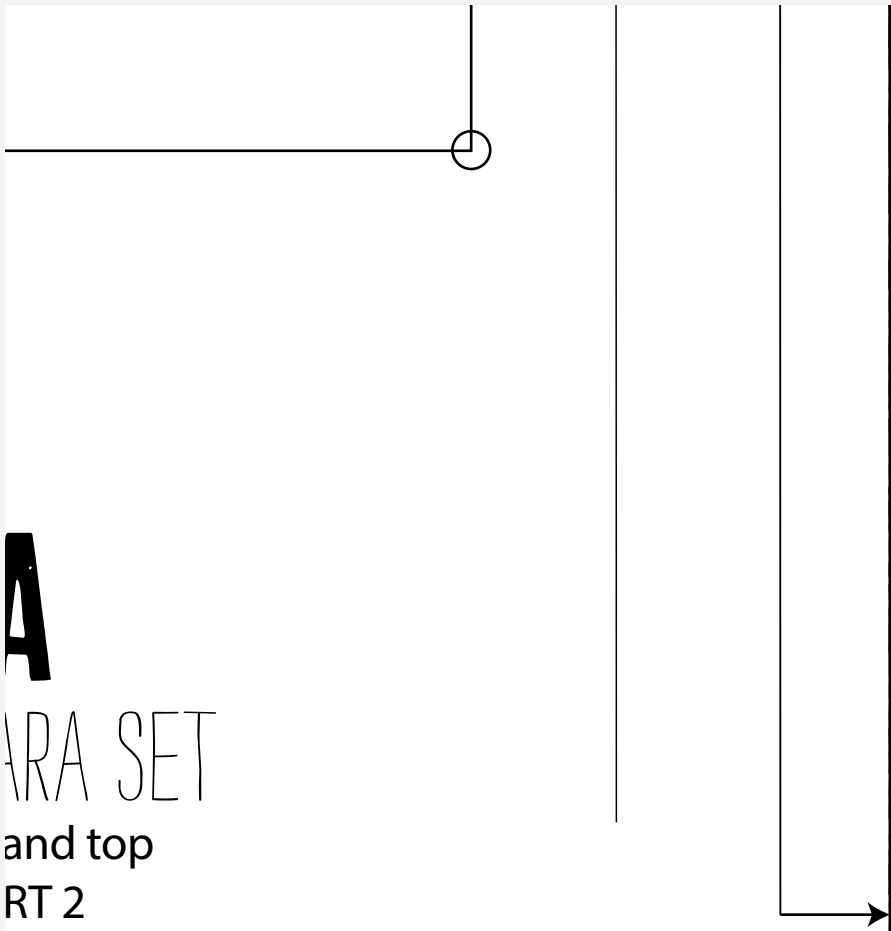


entre front Foldline





THE LA
Dress
PA
Front
Cut 1



A
ARA SET
and top
RT 2
bodice
on fold



WWW.SIMPLYSEWINGMAG.COM

© Printed in the UK for Simply Sewing magazine. Supplied by Immediate Media Company Ltd, Bristol, BS1 3BN. To be used for individual, private home use only and not for commercial or manufacturing purposes.



side seam here

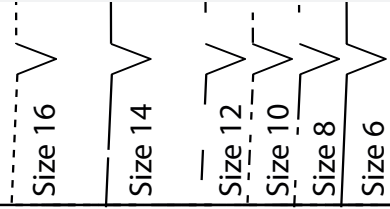
Attach patter

in piece A PART 2 here

C

Size 20

Size 18



Cut here for dress



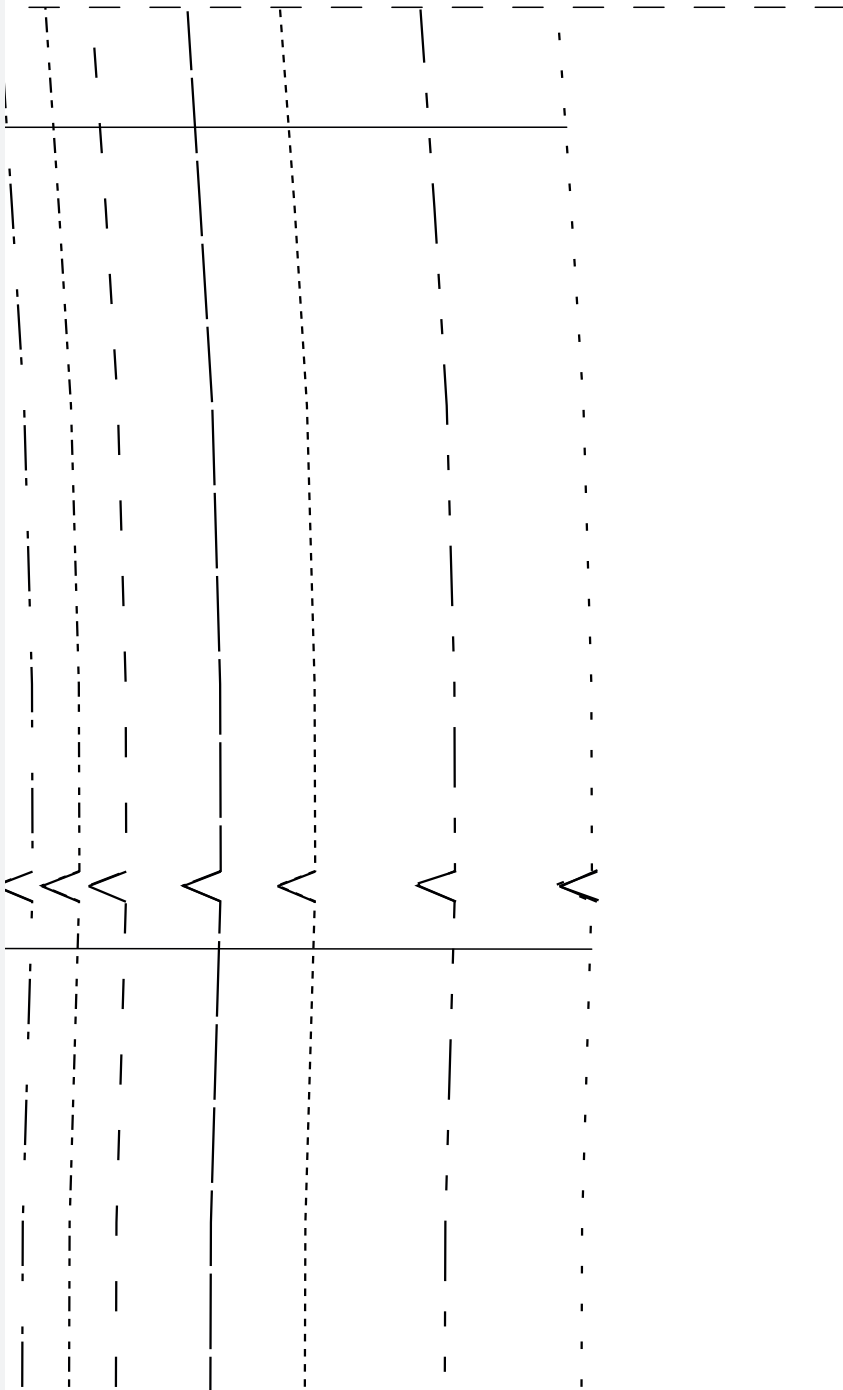
Zip notch
dress

Attach pattern piece B PART 1 here

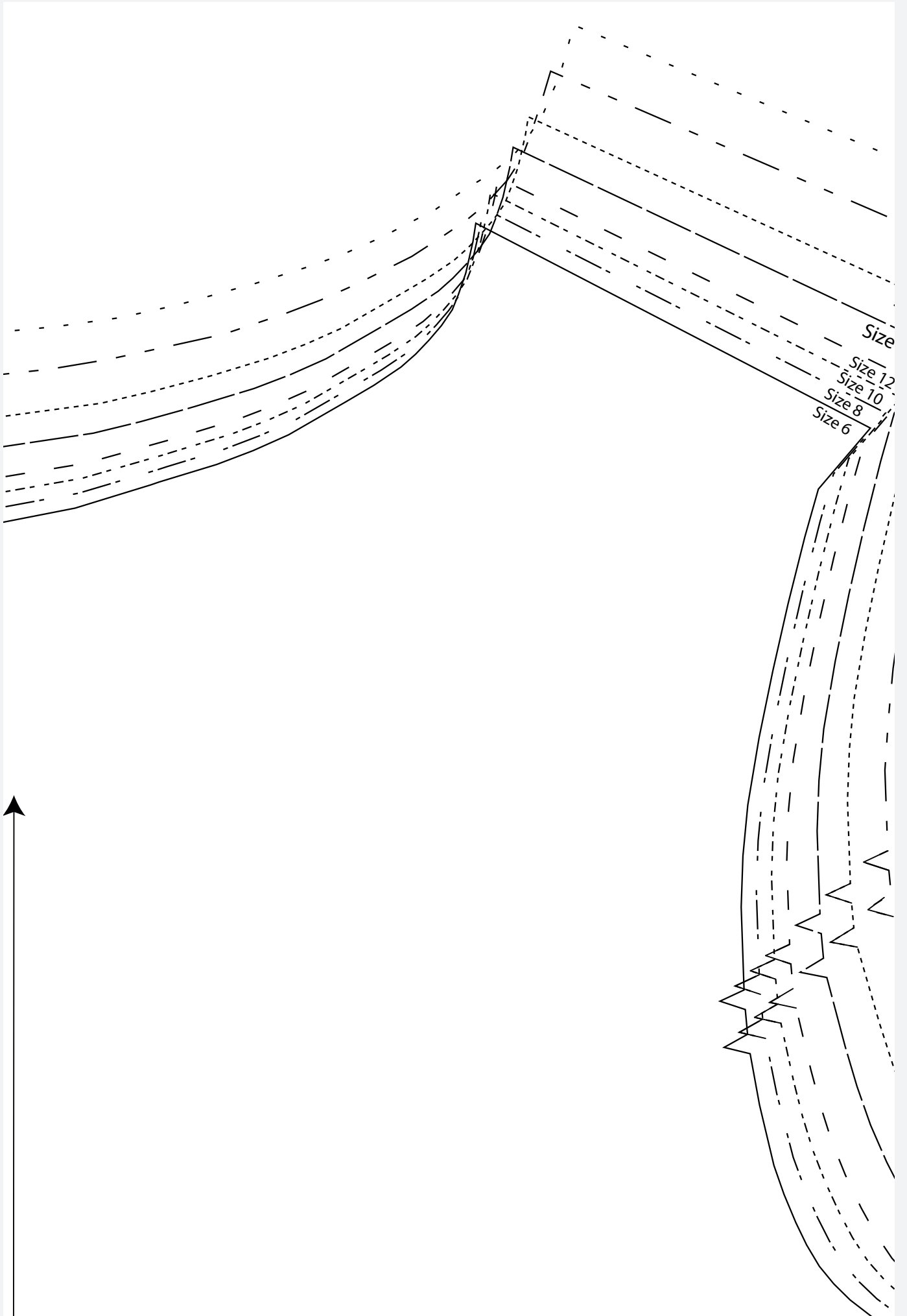
Shorten/lengthen line

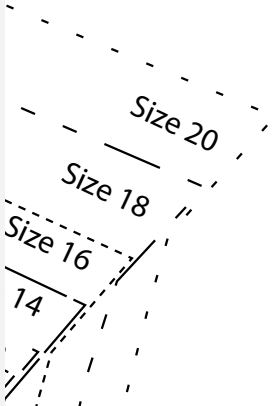
Cut here for top

Notch for dress only



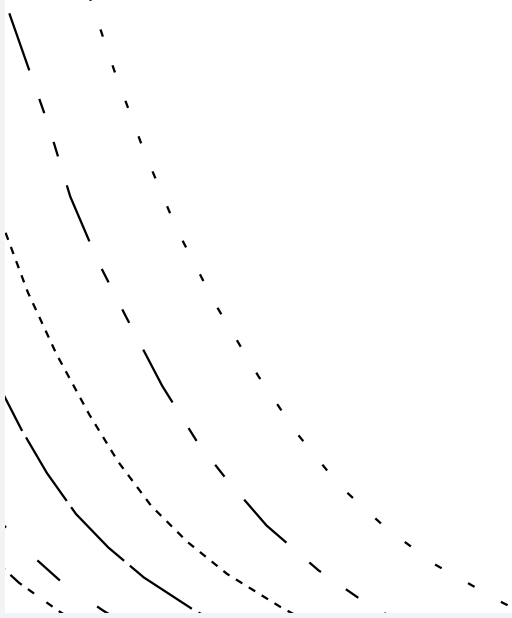
Size 20
Size 18
Size 16
Size 14
Size 12
Size 10
Size 8
Size 6





Pattern Size chart

—————	Size 6
- - - - -	Size 8
.....	Size 10
- _ - _ -	Size 12
—————	Size 14
.....	Size 16
- _ - _ -	Size 18
.....	Size 20



B

THE LARA SET

Dress and top

PART 2

Back bodice

Cut 1 pair

Grainline

Zip notch
top

Centre back seam



B

THE LARA SET

Dress and top

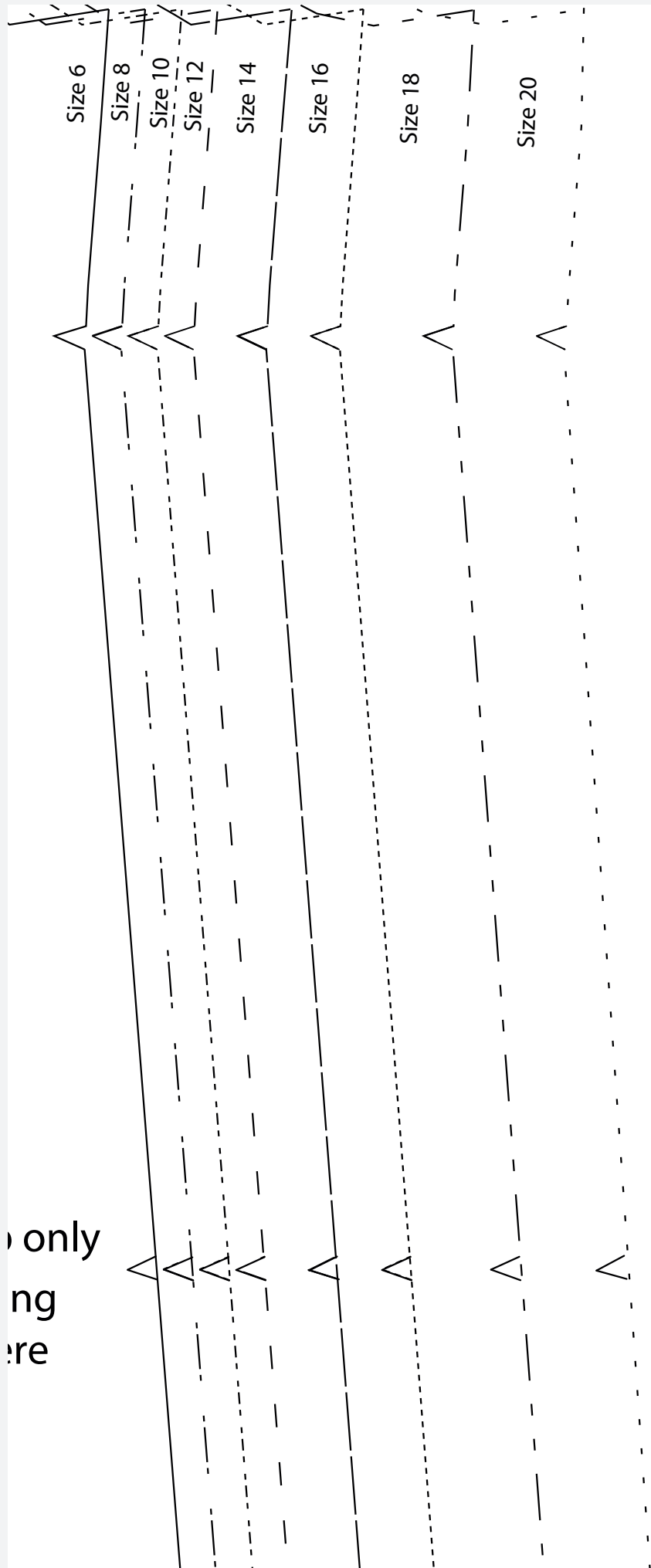
PART 1

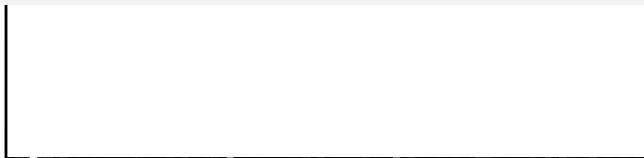
Back bodice

Cut 1 pair

Notch for top
- stop stitchi
side seam he

only
ng
re

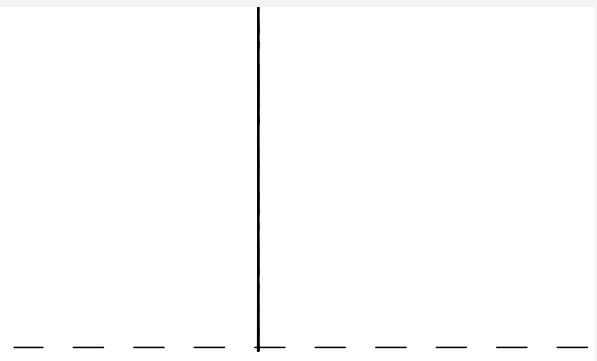




Cut here for dress

Size 6
Size 8

Size 10
Size 12
Size 14
Size 16
Size 18
Size 20



Attach pattern piece B PART 2 here

