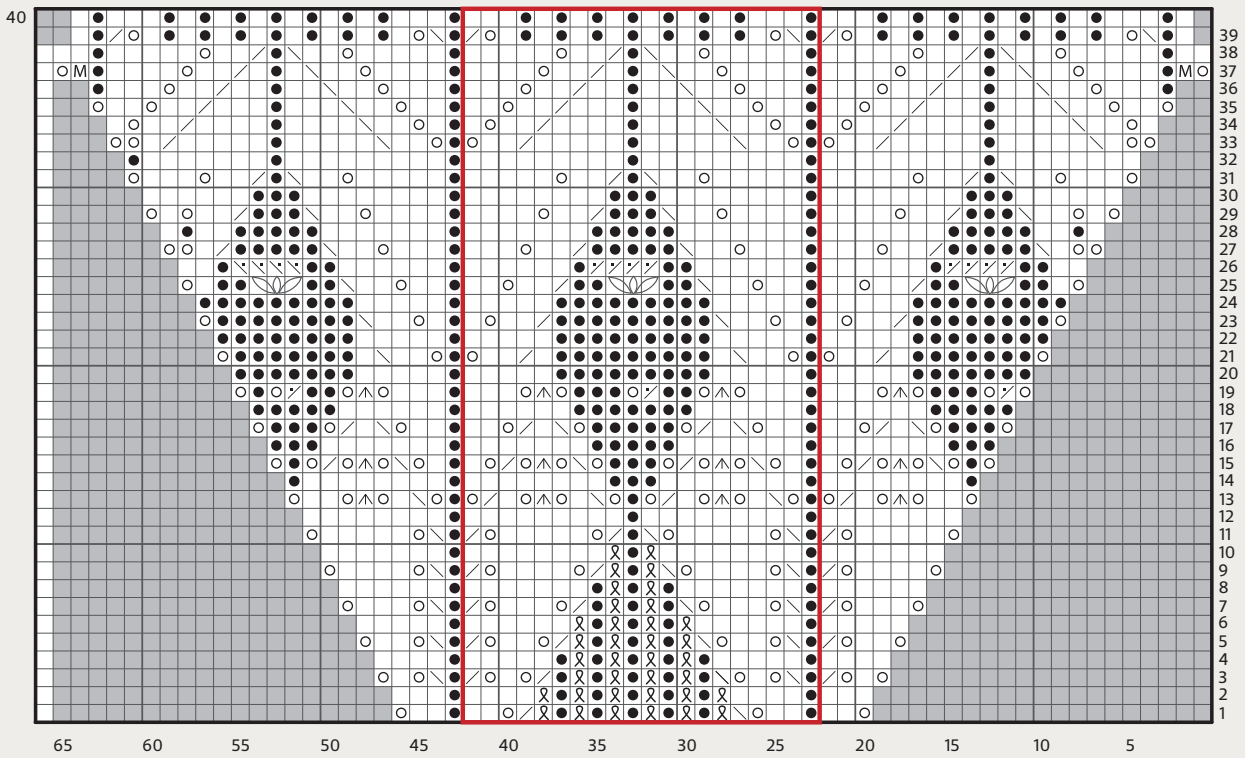


CHARTS

Chart B



Front Chart

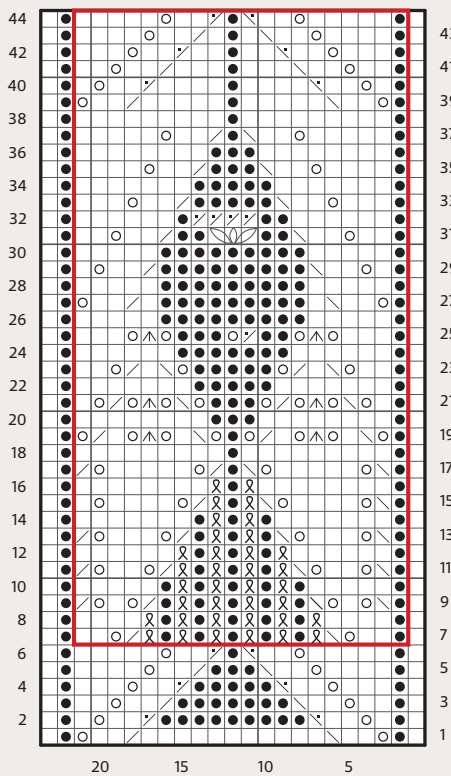
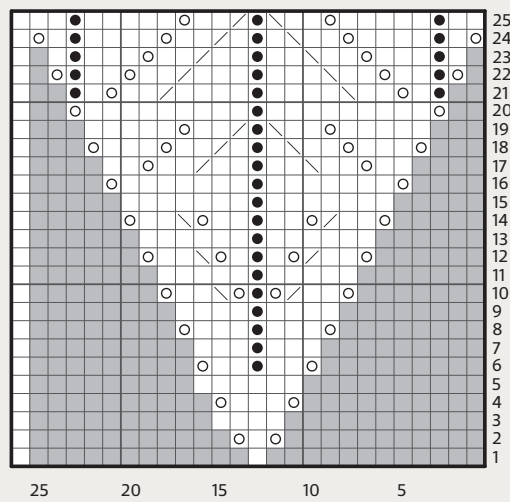


Chart A



KEY

- Knit on RS; purl on WS
- Purl on RS; knit on WS
- K1tbl on RS; p1tbl on WS
- Yo
- K2tog
- SSK
- S2kpo
- P2tog
- SSP
- Dipped Eyelash Stitch
- M1
- No Stitch
- Repeat

“ CROPPED SLEEVES  
ARE WORKED FROM  
THE TOP DOWN AND  
FINISHED WITH AN  
I-CORD CAST-OFF ”