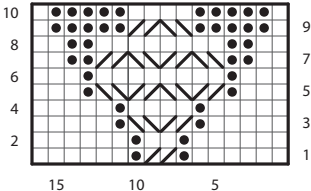


Chart A





K on RS; P on WS



P on RS; K on WS



T2B



T2F



Repeat

Chart C

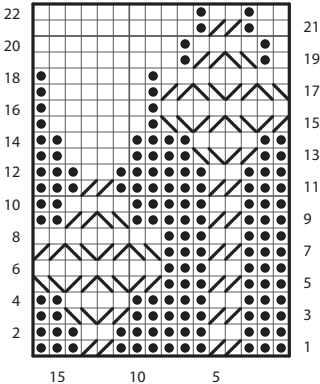


Chart B

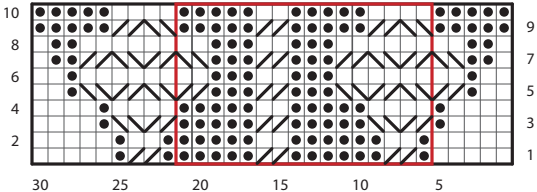


Chart B notes:

On page 10, when using Chart B for the back Jadeite panel, work over 62 sts as follows:

RS Rows: Work from right to left i.e. work first 5 sts, then rep 16 sts in red repeat box three times, work last 9sts.

WS Row: Work from left to right, i.e. work last 9sts, then rep 16 sts in red repeat box 3 times, work first 5sts.

On page 11, when using Chart B for the front Jadeite panel, work as follows:

For the second set of clusters for the front, use chart B over the full 30sts.

For the third set, use chart B over 46sts, i.e. work the 16st repeat box twice

For the fourth set, use chart B over 62sts, working the repeat box three times as given for the back.