

HOOK 'N' LEARN

GREAT FOR BEGINNERS!

Apache tears

Get hooking Lucy Croft's ninth block for our beautiful blanket



© Immediate Media Ltd

HOOK 'N' LEARN

Scheepjes

Made in association with Scheepjes. For stockists visit www.scheepjes.com



This version of the blanket is made in Scheepjes Stone Washed XL. Apache Tears is the ninth stitch to learn in our *Simply Crochet* Hook 'n' Learn. There are three more stitches to come, which we'll take you through step-by-step, making this a perfect project for a beginner.

This is the ninth pattern in our Hook 'n' Learn blanket crochet-along, which we're running over the year. Perfect for beginners and fun for more experienced stitchers too, you'll learn how to do 12 attractive stitches, then we'll show you how to put it all together in the last issue. This month, try Lucy's Apache Tears stitch. Choose between the beautiful soft shades of Stone Washed XL, or the bright tones of Colour Crafter (or go mad and make both!). Please note: if you're making the Colour Crafter version you'll need to make two Apache Tears Blocks.

STONE WASHED XL

Make one Apache Tears Block

- Scheepjes Stone Washed XL (70% cotton, 30% acrylic, 50g/75m), 1 ball of each: Turquoise (864), Morganite (874)
- A 5.5mm (US I/9) hook

For yarn stockists for both versions visit Scheepjes at www.scheepjes.com/en

TENSION

13 dc and 13 rows to measure 10x10cm (4x4in) over patt using a 5.5mm hook

MEASUREMENTS

Block measures 20x40cm (8x16in)

COLOUR CRAFTER

Make two Apache Tears Blocks

- Scheepjes Colour Crafter (100% acrylic, 100g/300m), 1 ball of each:
 - Block 1 Eindhoven (1114), Alphen (1722)
 - Block 2 Goes (1820), Tilburg (1083)
- A 4mm (US G/6) hook

TENSION

16 dc and 16 rows to measure 10x10cm (4x4in) over patt using a 4mm hook

MEASUREMENTS

Block measures 16x32cm (6¼x12½in)

ABBREVIATIONS

For a full list see www.simplycrochetmag.co.uk/uk-and-us-crochet-conversion-chart/

NOTES

The Square was designed by a left handed designer. If you are right handed the block will work up as a reverse of the image. All stitches are worked on the RS; fasten off at the end of each row and rejoin yarn in first st on RS. All dc are worked into bl of st. All dtr are worked into fl of the st 3 rows below. **The instructions for the Colour Crafter blanket are shown in brackets.**

APACHE TEARS BLOCK

Using a 5.5mm (4mm: 4mm) hook and Turquoise (Eindhoven: Goes), ch52.

Row 1 (RS) Dc in 2nd ch from hook and each ch across. **Fasten off.** [51 dc]

Row 2 (RS) Join Turquoise (Eindhoven: Goes) in first st, ch1 (doesn't count as st throughout), dc in bl of each st across. **Fasten off.** [51 dc]

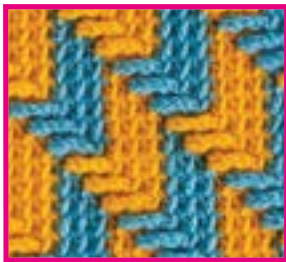
Row 3 Repeat Row 2.

Row 4 Join Morganite (Alphen: Tilburg) in first st, ch1, dc in bl of first st, *dtr in fl of st 3 rows



SHOW US YOUR HOOK 'N' LEARN!

We want to see how you're getting on! Join our group at www.facebook.com/groups/hooknlearn and post your pics on Facebook and Instagram #SHooknlearn



COLOUR CRAFTER

Top: the two-tone Apache Tears block is worked in Stone Washed XL Turquoise and Morganite; Middle: worked in Colour Crafter Eindhoven and Alphen; Bottom: worked in Colour Crafter Goes and Tilburg; Right: Colour Crafter creates a distinctively bright and attractive blanket.

below next st, dc in bl of each of next 7 sts; rep from * 5 times more, dtr in fl of st 3 rows below next st, dc in bl of next st. **Fasten off.** [7 dtr, 44 dc]

Row 5 Join Morganite (Alphen: Tilburg) in first st, ch1, dc in bl of first 2 sts, *dtr in fl of st 3 rows below next st, dc in bl of each of next 7 sts; rep from * 5 times more, dc in bl of next st.

Fasten off.

Row 6 Join Morganite (Alphen: Tilburg) in first st, ch1, dc in bl of first 3 sts, *dtr in fl of st 3 rows below next st, dc in bl of each of next 7 sts; rep from * 5 times more. **Fasten off.**

Row 7 Join Turquoise (Eindhoven: Goes) in first st, ch1, dc in bl of first 3 sts, *dc in bl of next st, dtr in fl of st 3 rows below next st, dc in bl of each of next 6 sts; rep from * 5 times more.

Fasten off.

Row 8 Join Turquoise (Eindhoven: Goes) in first st, ch1, dc in bl of first 3 sts, *dc in bl of next 2 sts, dtr in fl of st 3 rows below next st, dc in bl of each of next 5 sts; rep from * 5 times more.

Fasten off.

Row 9 Join Turquoise (Eindhoven: Goes) in first st, ch1, dc in bl of first 3 sts, *dc in bl of next 3 sts, dtr in fl of st 3 rows below next st, dc in bl of each of next 4 sts; rep from * 5 times more.

Fasten off.

Row 10 Join Morganite (Alphen: Tilburg) in first st, ch1, dc in bl of first 3 sts, *dc in bl of next 4

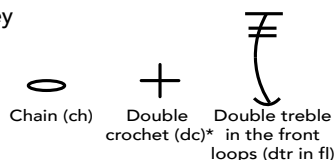
sts, dtr in fl of st 3 rows below next st, dc in bl of each of next 3 sts; rep from * 5 times more.

Fasten off.

Row 11 Join Morganite (Alphen: Tilburg) in first st, ch1, dc in bl of first 3 sts, *dc in bl of next 5 sts, dtr in fl of st 3 rows below next st, dc in bl of each of next 2 sts; rep from * 5 times more. **Fasten off.**

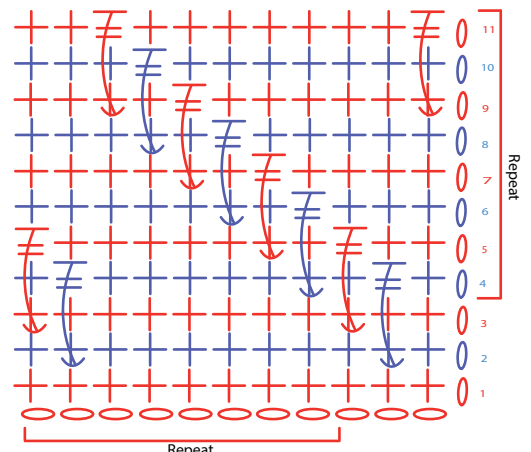
Rows 12-27 Repeat Rows 4-11 twice more, alternating colour every 3 rows.

Key



*All dc are worked into the back loop (bl)

Chart



BUY YOUR YARN HERE!

You can buy special Hook 'n' Learn kits for both Scheepjes Stone Washed XL and Colour Crafter yarns from www.blacksheepwools.com, www.deramores.com and www.woolwarehouse.co.uk. If you've missed the first eight patterns, the first three (Block, Waffle, Shell) are available to download for free (go to www.simplycrochet.co.uk), and you can get the next five (Spike, Cable, Granny Stripe, Catherine Wheel and Puff) by buying copies of our back issues (see page xx) or from Ravelry (www.ravelry.com).

