

Simply Sewing

FRESH IDEAS WITH FABRIC

HOW TO PRINT THIS PATTERN

Print out this 30-page PDF on to A4 paper. Trim away the shaded border from each page and position the pages as below to assemble the pattern...

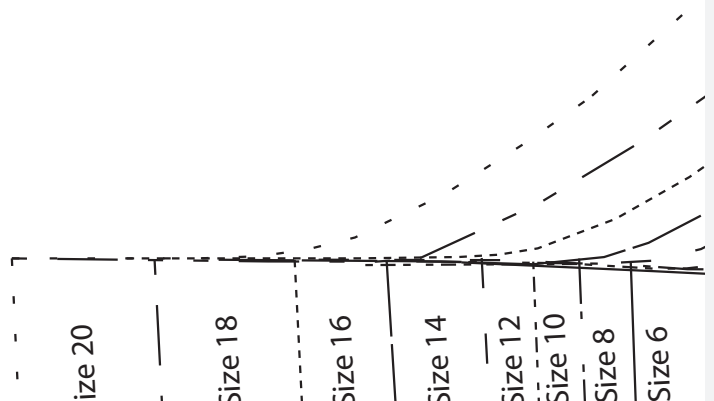
This grid contains pattern pieces 1 through 15. Piece 1 is a pattern size chart with sizes 6, 8, 10, 12, 14, 16, 18, and 20, and a box measure of 10cm x 10cm. Piece 2 is the front bodice - PART A, cut on fold, showing a V-neckline and bust darts. Piece 3 is a side bodice piece with a 'Shorten/lengthen line'. Piece 4 is a rectangular piece with a 'Place patch pocket here' label. Piece 5 is another rectangular piece. Piece 6 is a vertical strip with notches. Piece 7 is the front bodice - PART A, cut on fold, showing the neckline and bust area. Piece 8 is a vertical strip with 'Grainline' and 'Centre front' labels. Piece 9 is the front bodice - PART B, cut on fold, showing a side bodice piece. Piece 10 is a vertical strip with a pocket opening. Pieces 11-15 are additional vertical strips and pieces related to the bodice construction.

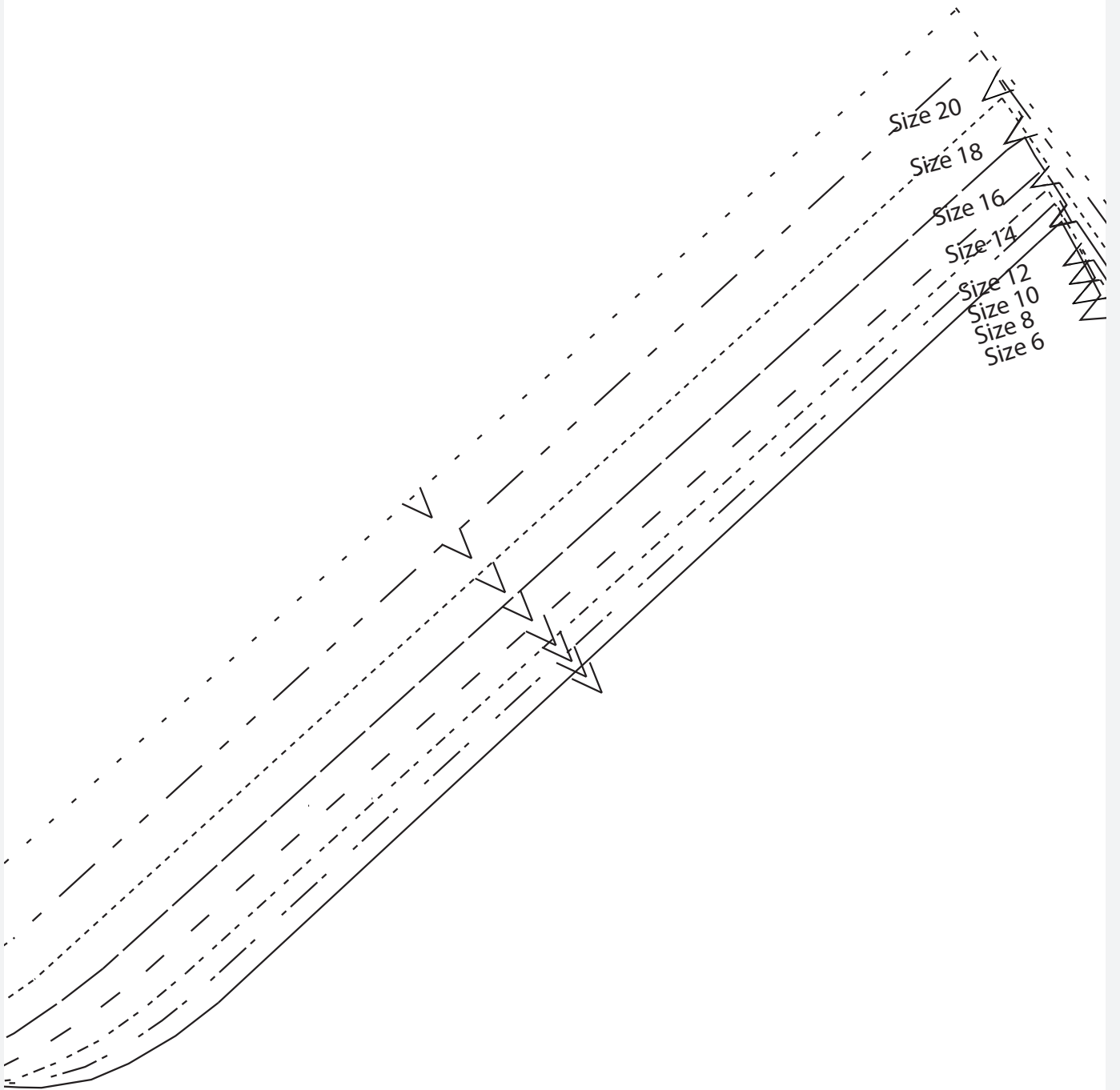
This grid contains pattern pieces 16 through 30. Piece 16 is a pattern size chart. Piece 17 is the sleeve, cut on fold, showing a curved neckline and armhole. Piece 18 is the sleeve, cut on fold, showing the armhole and cuff area. Piece 19 is a rectangular piece with a 'Grainline' label. Piece 20 is a rectangular piece with a 'Fold line' label. Piece 21 is the back bodice, cut on fold, showing a V-neckline and bust darts. Piece 22 is a vertical strip with a 'Grainline' label. Piece 23 is a vertical strip with a 'Shorten/lengthen line' label. Piece 24 is a rectangular piece with a 'Grainline' label. Piece 25 is a rectangular piece with a 'Fold line' label. Pieces 26-30 are additional vertical strips and pieces related to the back bodice construction.

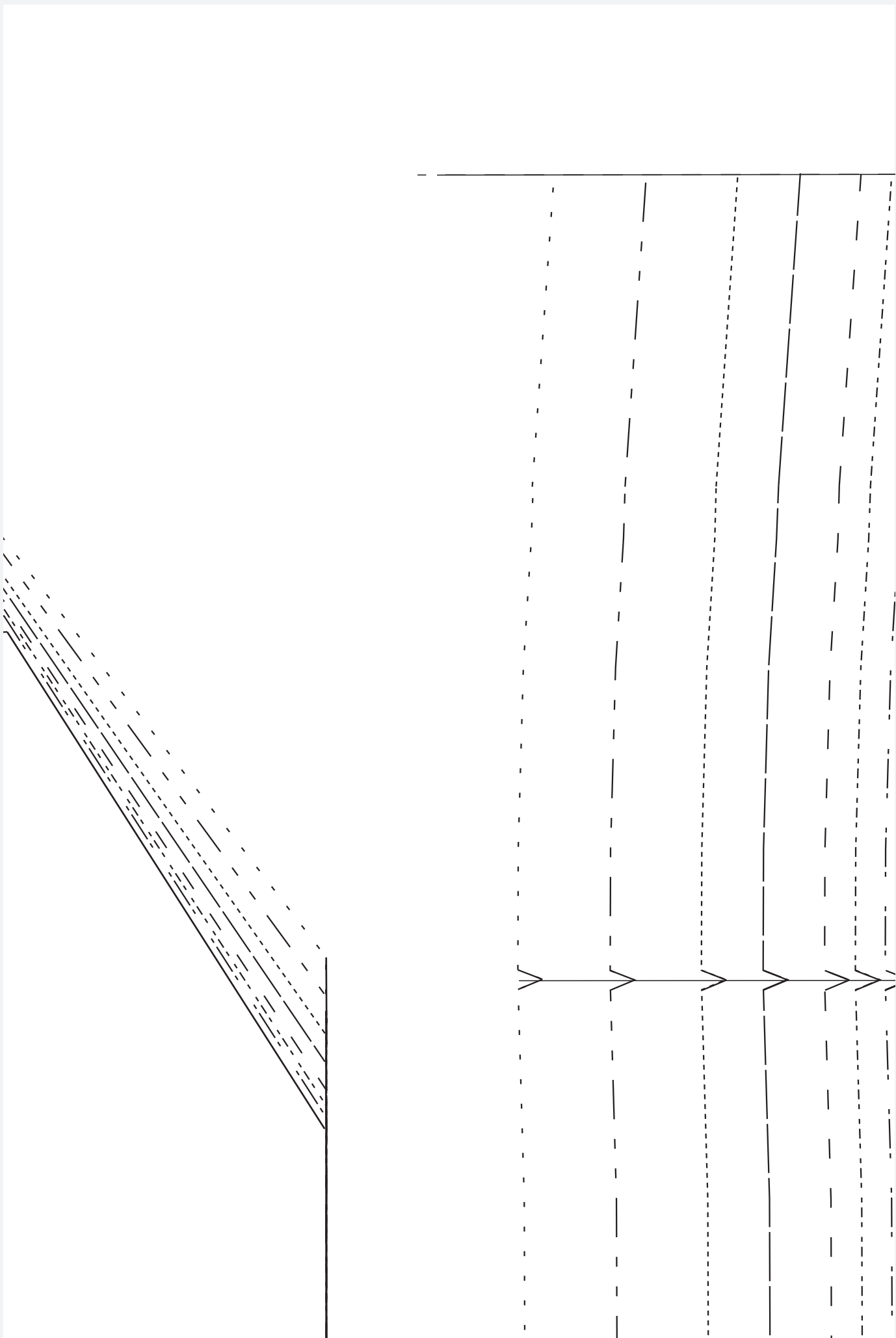
Pattern size chart

—————	Size 6
- - - - -	Size 8
.....	Size 10
- - - - -	Size 12
—————	Size 14
.....	Size 16
- - - - -	Size 18
- - - - -	Size 20

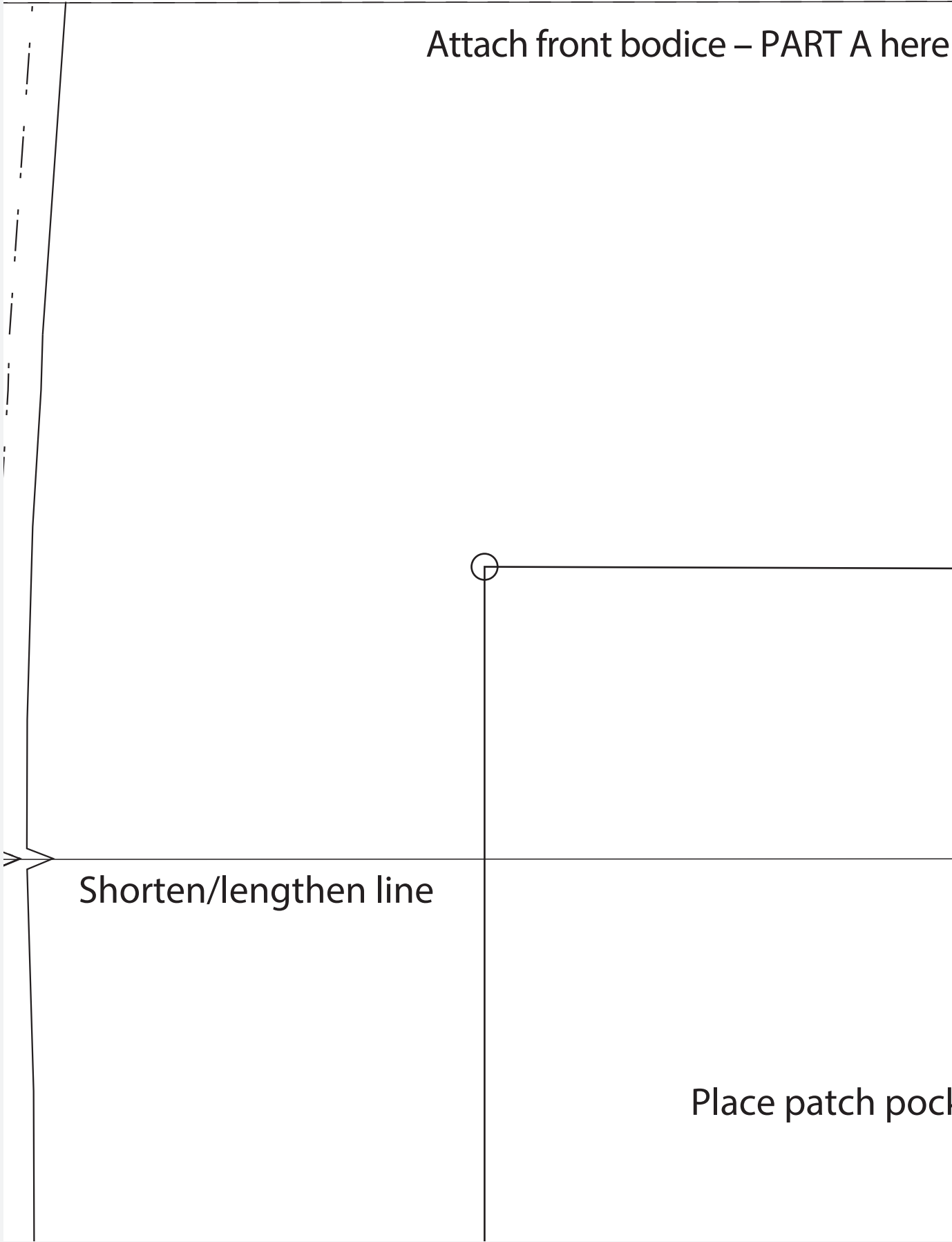
Box measures 10cm x 10cm





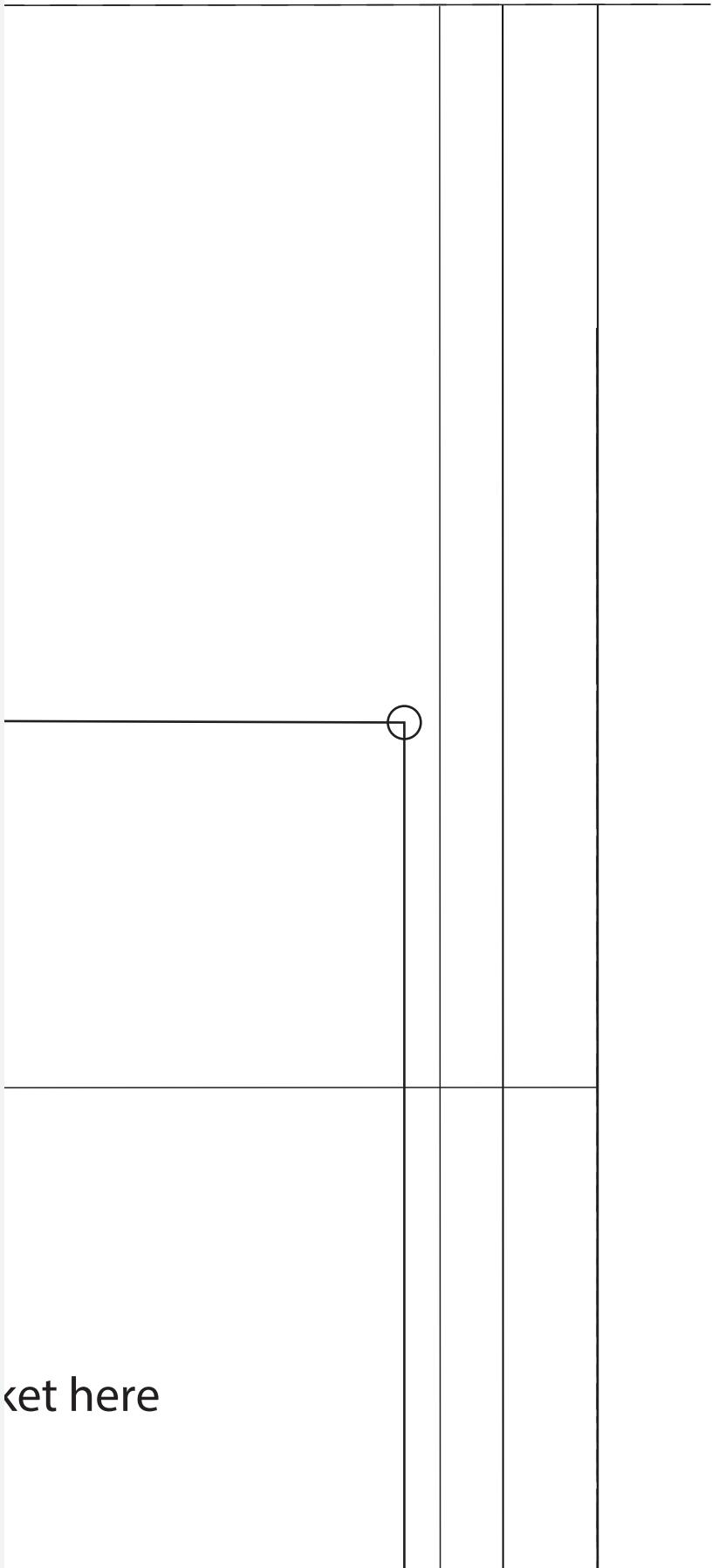


Attach front bodice – PART A here



Shorten/lengthen line

Place patch pocket



ket here

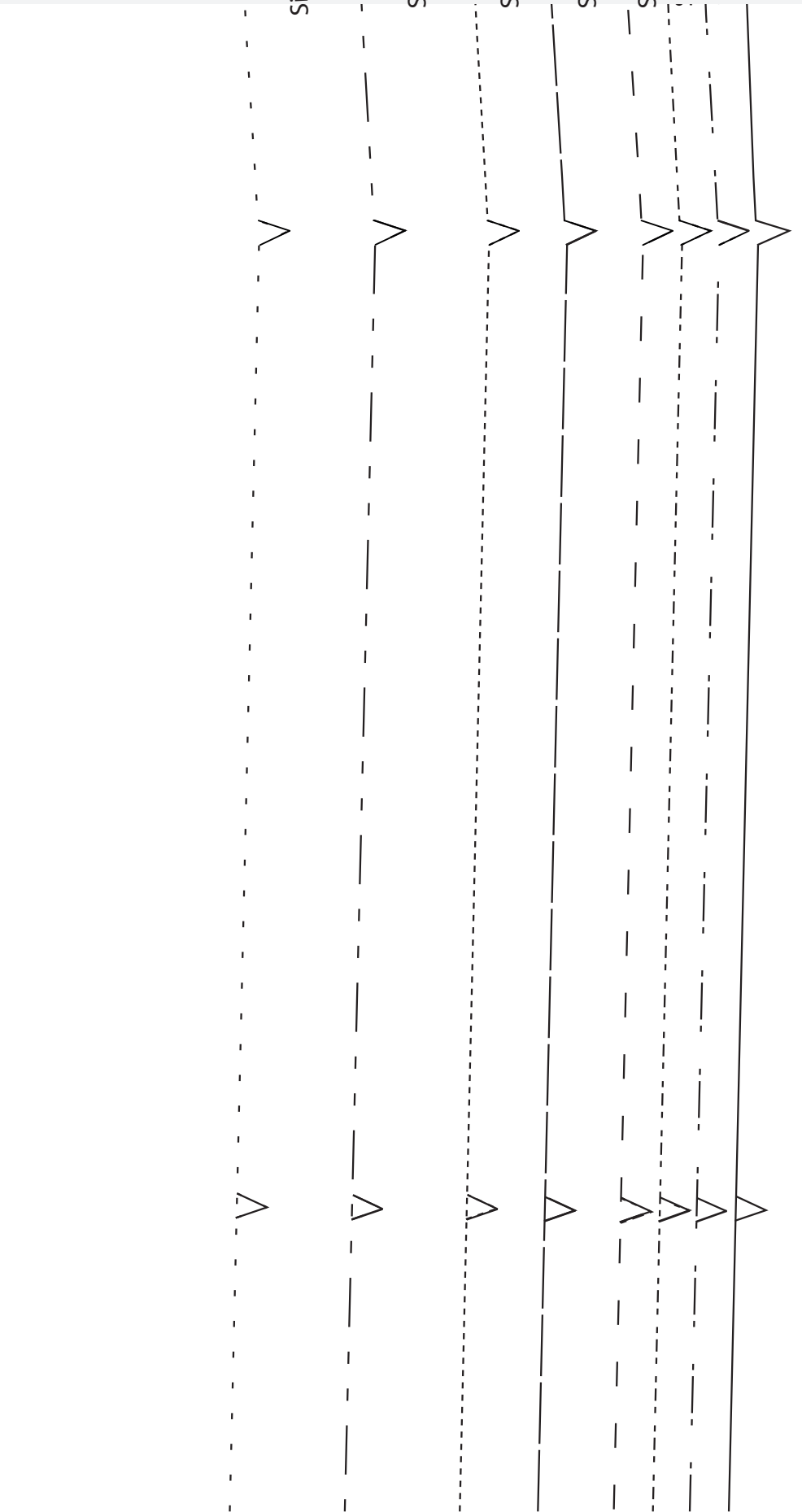
Size 20

Size 18

Size 16

Size 14

Size 12



A

THE JODIE DRESS

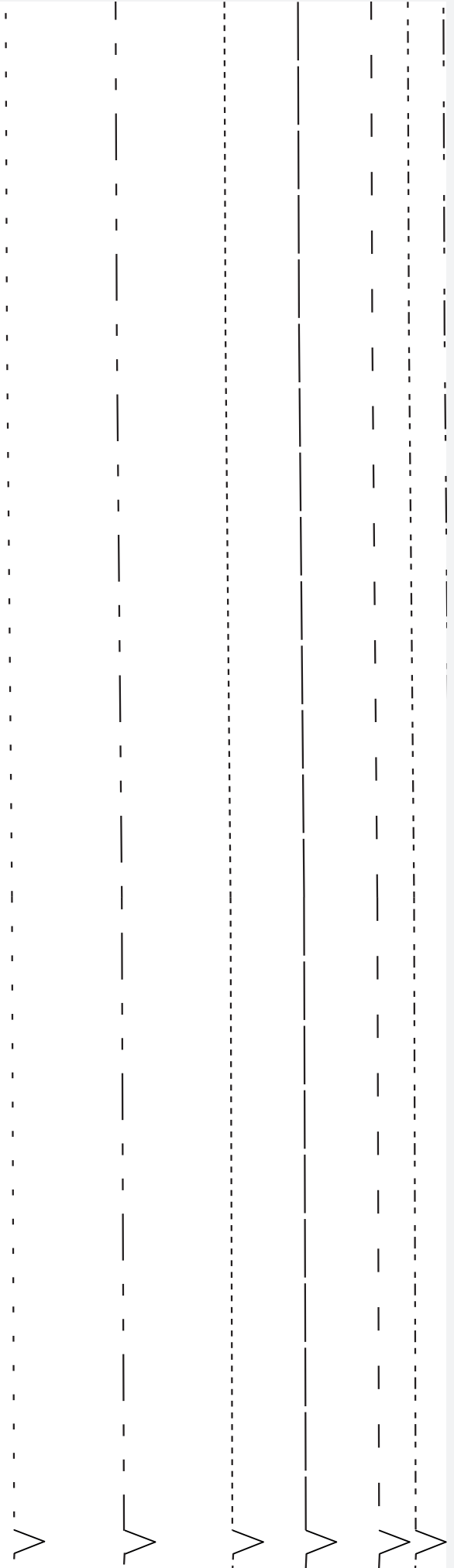
Front bodice – PART A

Cut 1 on fold

Attach front bodice – PART B here

Grainline

Centre front
Foldline





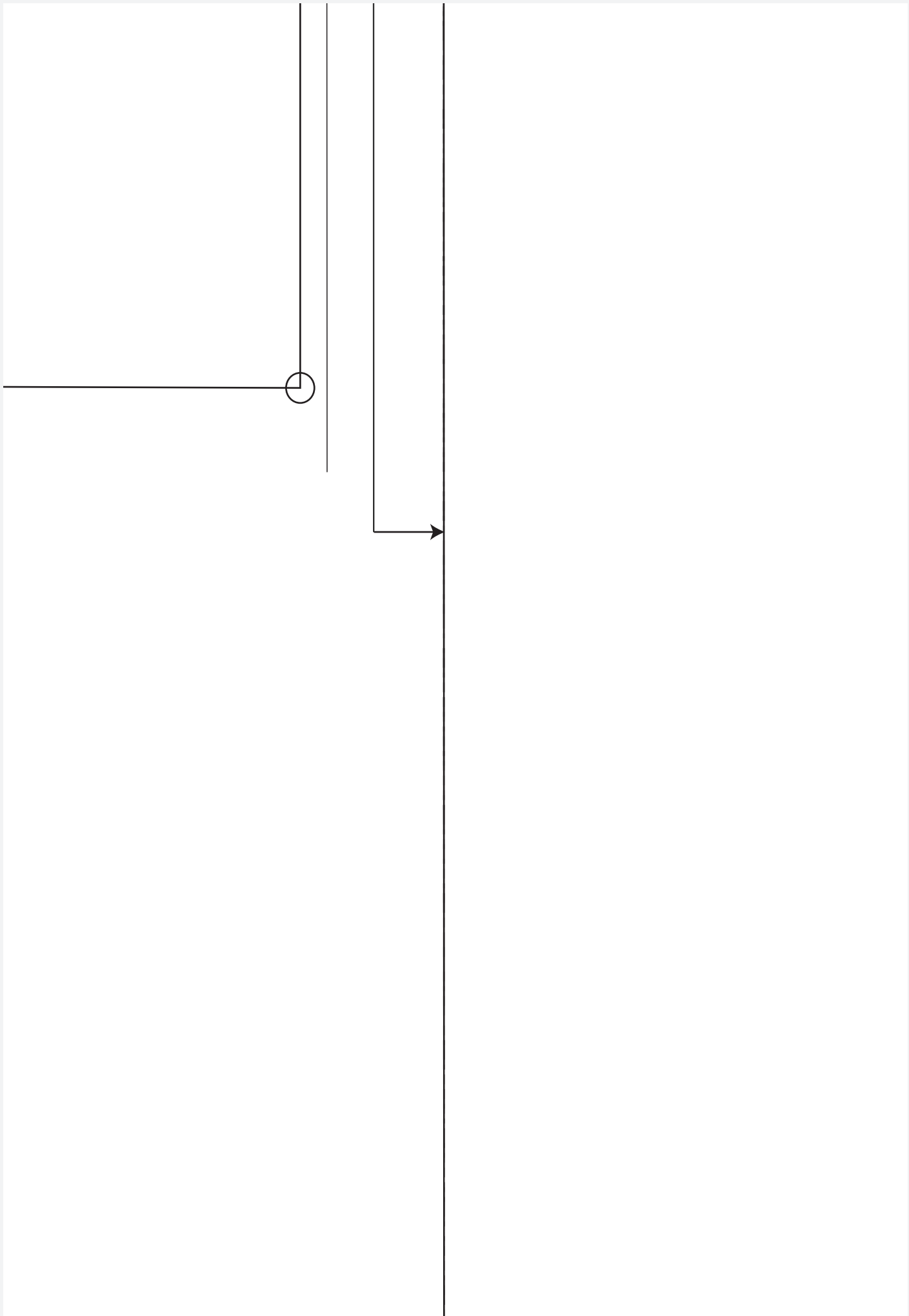
A

THE JODIE DRESS

Front bodice – PART B

Cut 1 on fold





Size 20

Size 18

Size 16

Size 14

Size 12

Size 10

Size 8

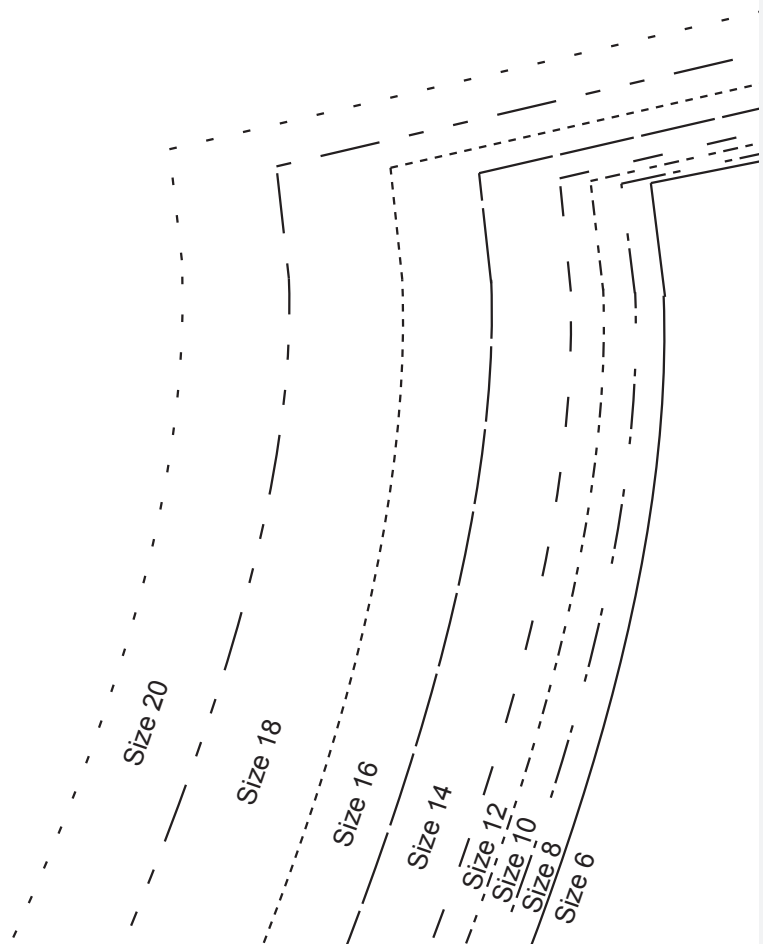
Size 6

© Printed in the UK for Simply Sewing magazine. Supplied by Immediate Media Company Ltd, Bristol, BS1 3BN. To be used for individual, private home use only and not for commercial or manufacturing purposes.

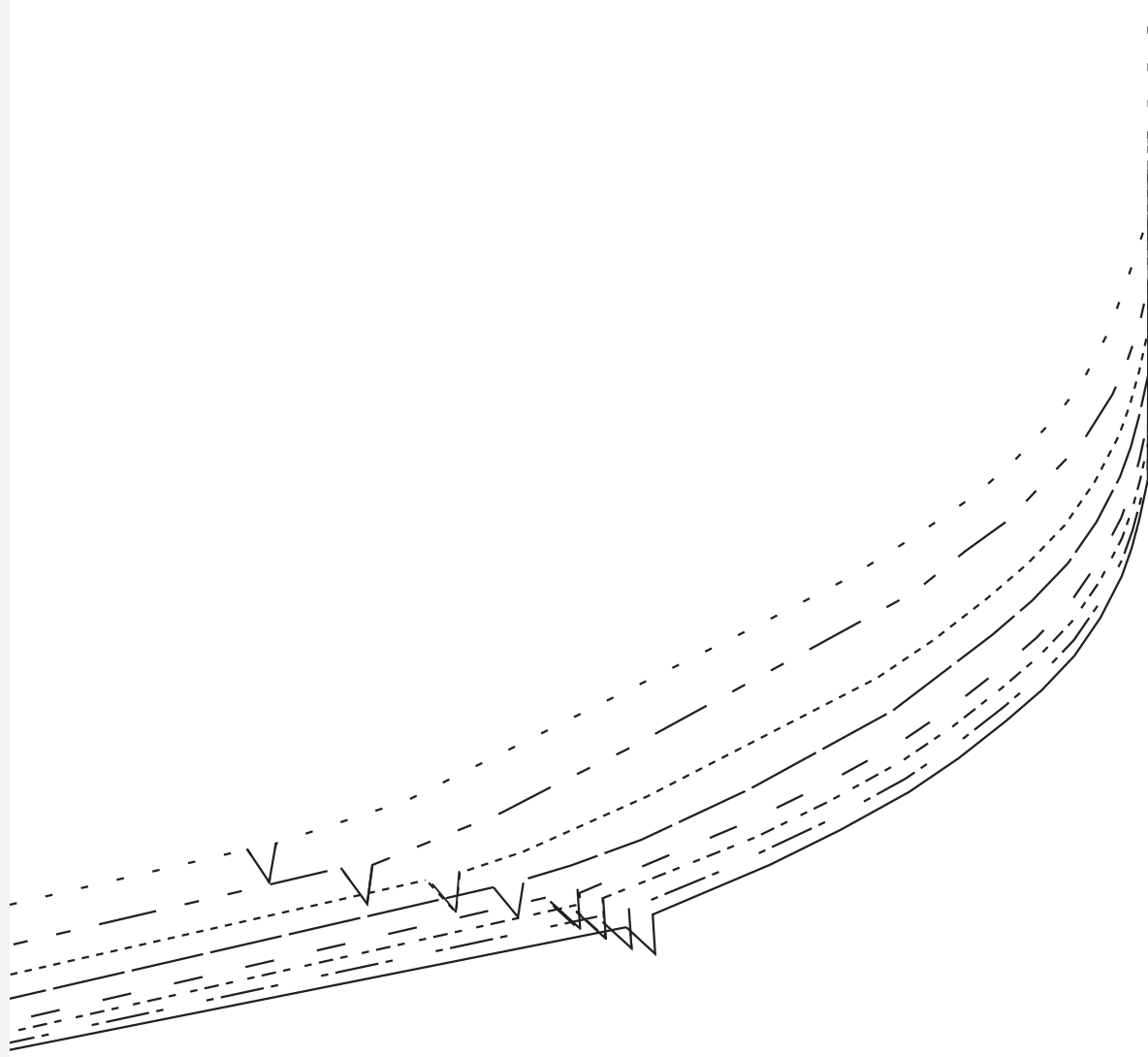
Pattern size chart

_____	Size 6
- - - - -	Size 8
- - - - -	Size 10
- - - - -	Size 12
_____	Size 14
- - - - -	Size 16
- - - - -	Size 18
- - - - -	Size 20

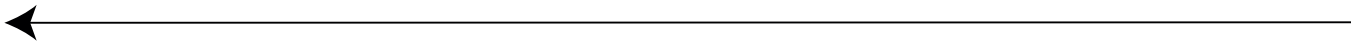
Box measures 10cm x 10cm



- Size 20
- Size 18
- Size 16
- Size 14
- Size 12
- Size 10
- Size 8
- Size 6



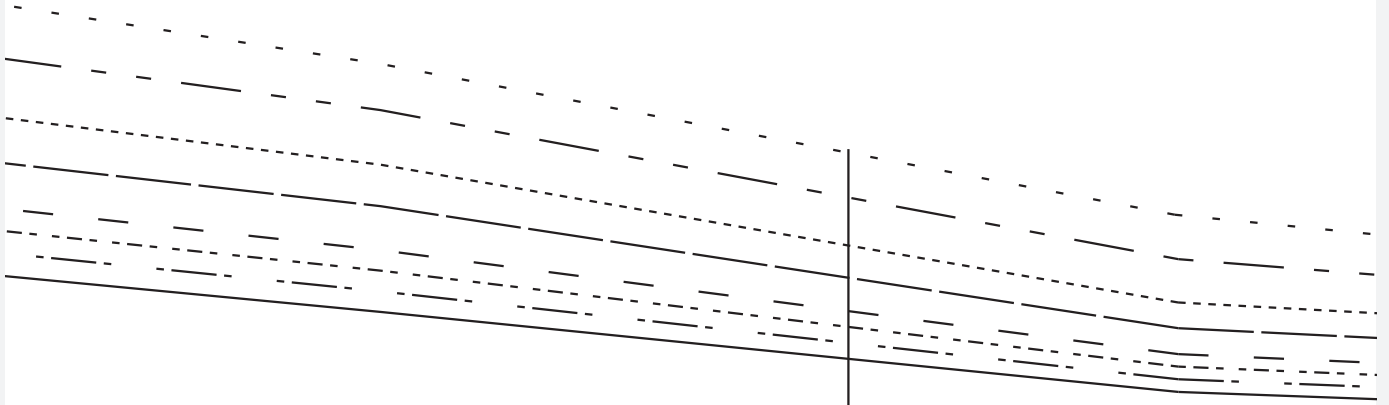
line

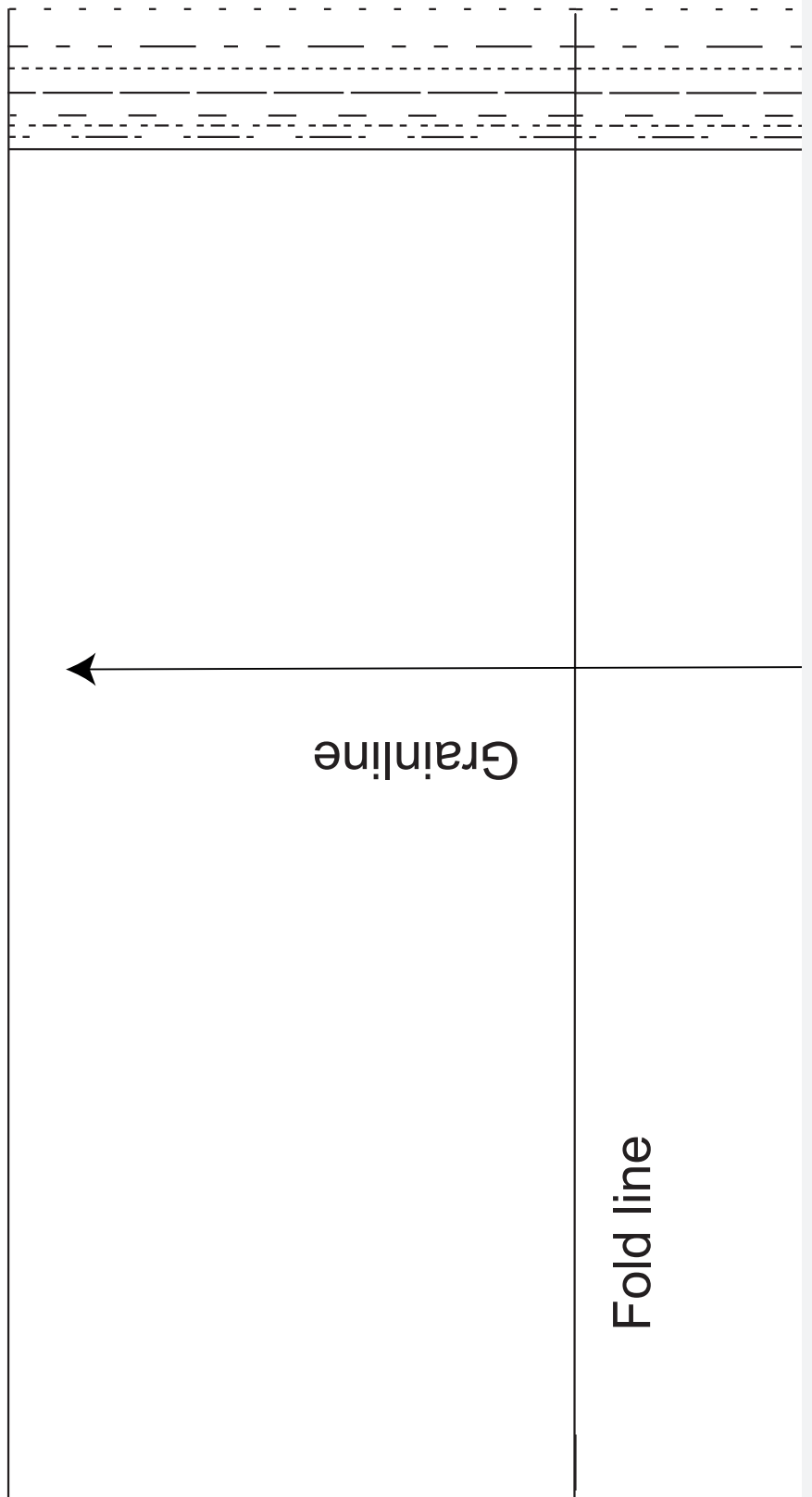


E

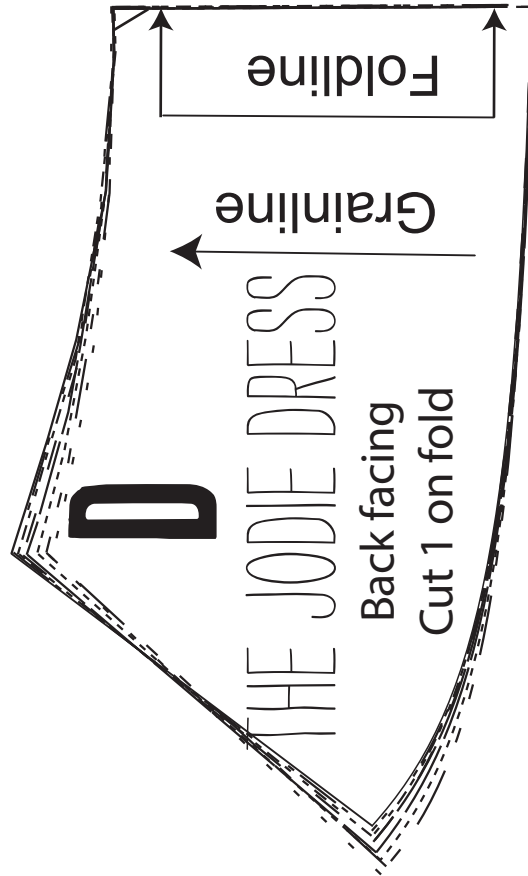
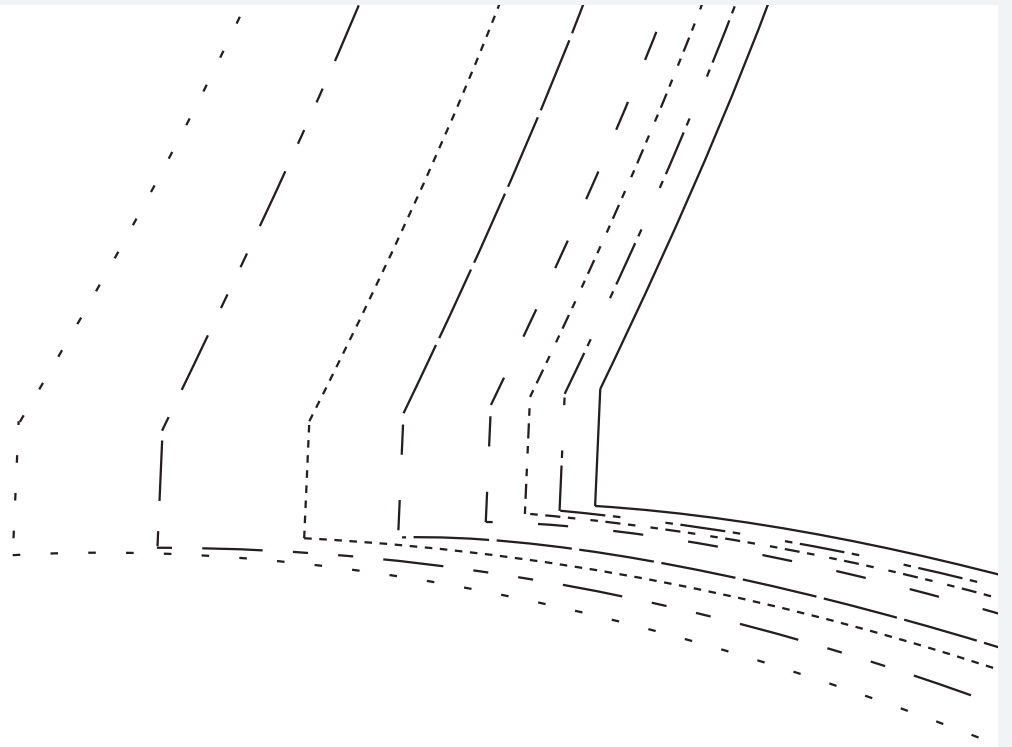
THE JODIE DRESS

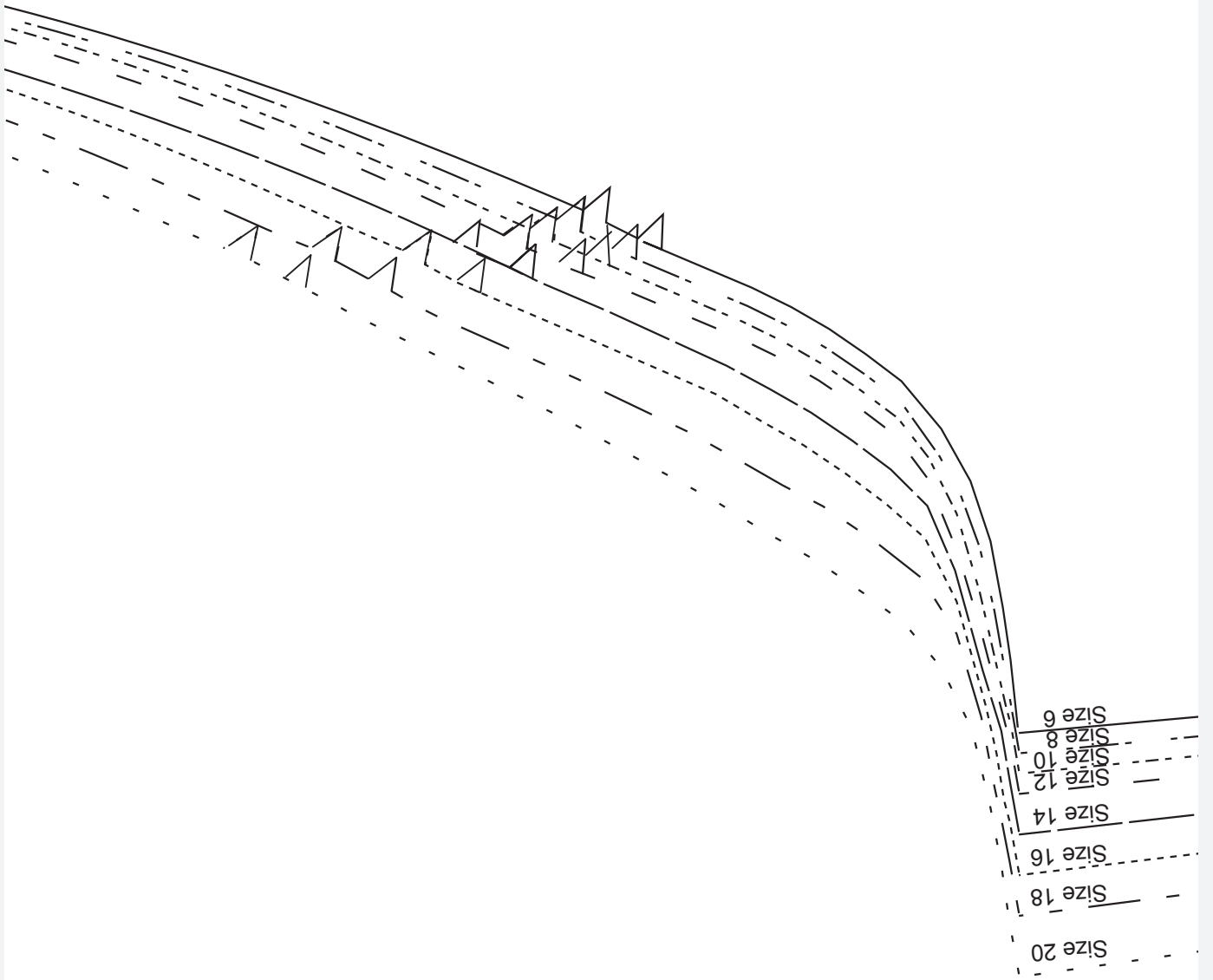
Sleeve
Cut 1 pair



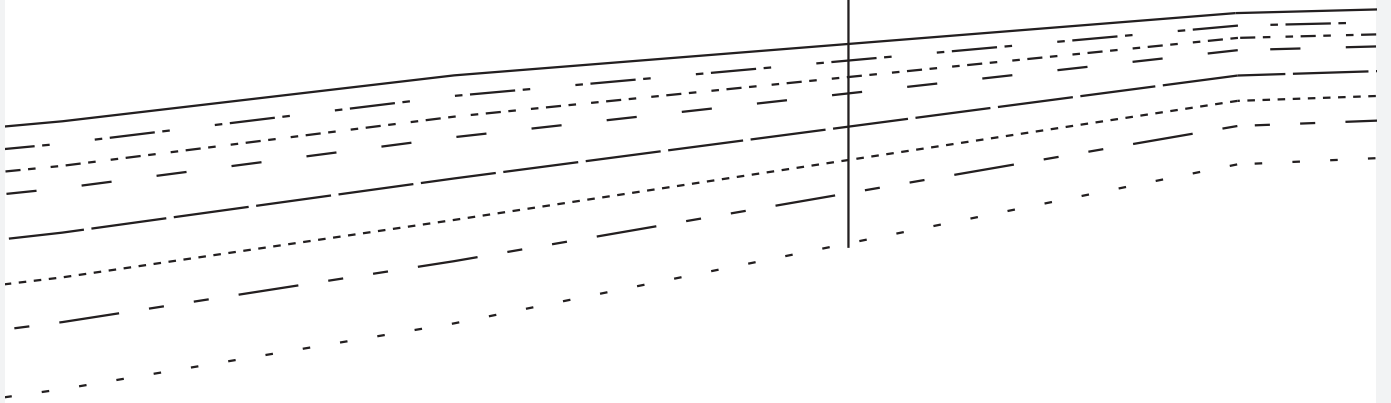


-----	Size 20
-----	Size 18
-----	Size 16
-----	Size 14
-----	Size 12
-----	Size 10
-----	Size 8
-----	Size 6





Shorten/lengthen line



G

Size 6
Size 8
Size 10
Size 12
Size 14
Size 16
Size 18
Size 20



THE JODIE DRESS

Sleeve cuff

Cut 1 pair

