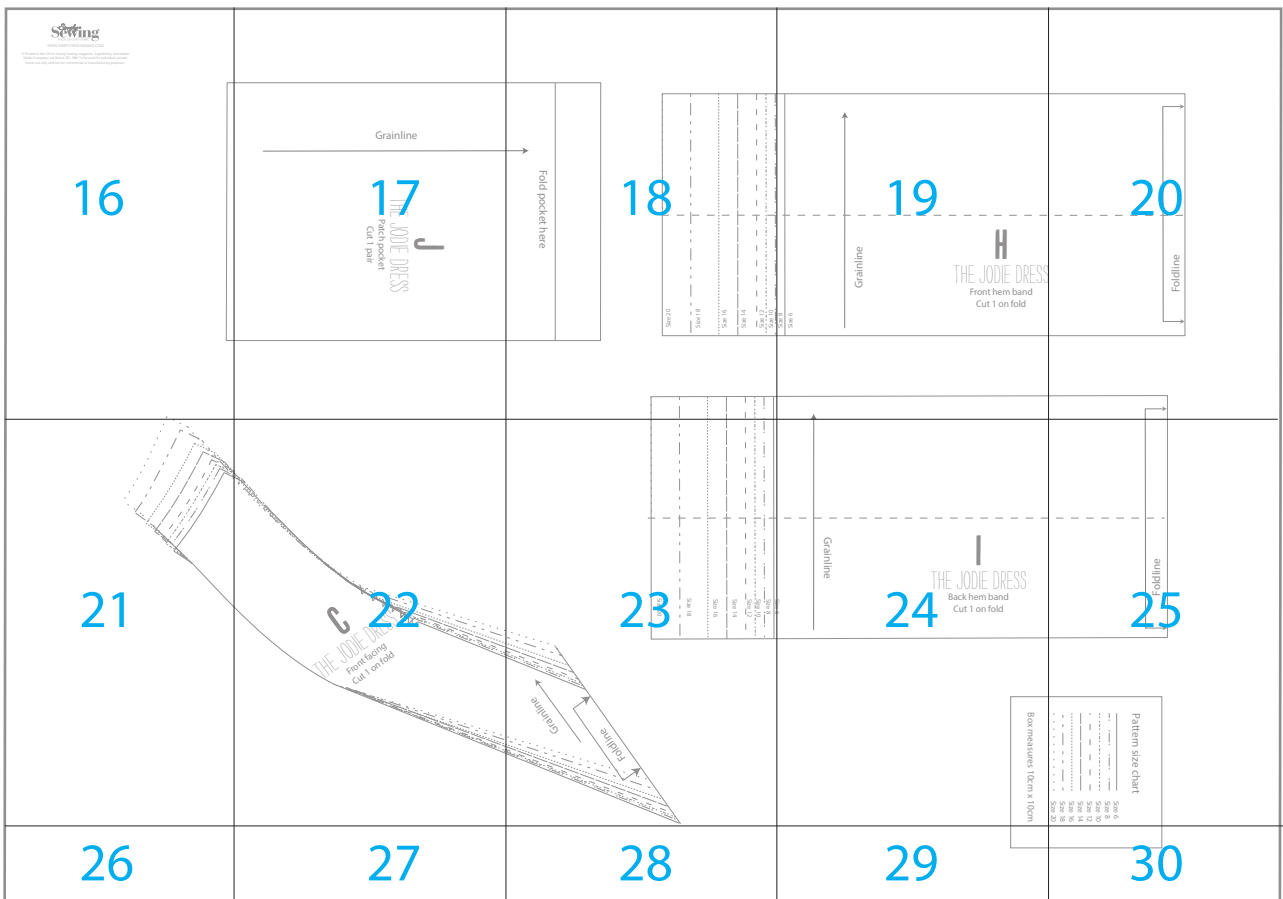
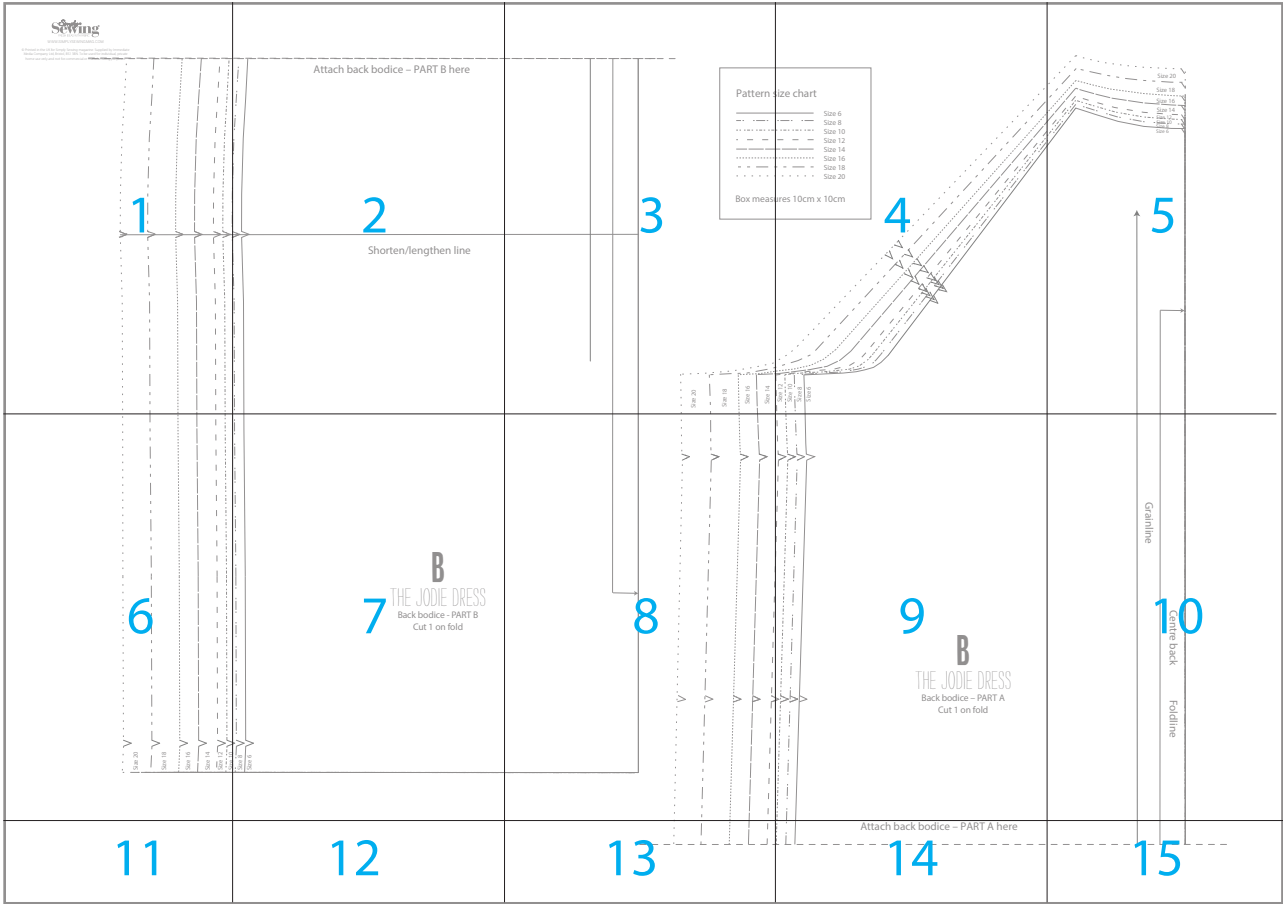
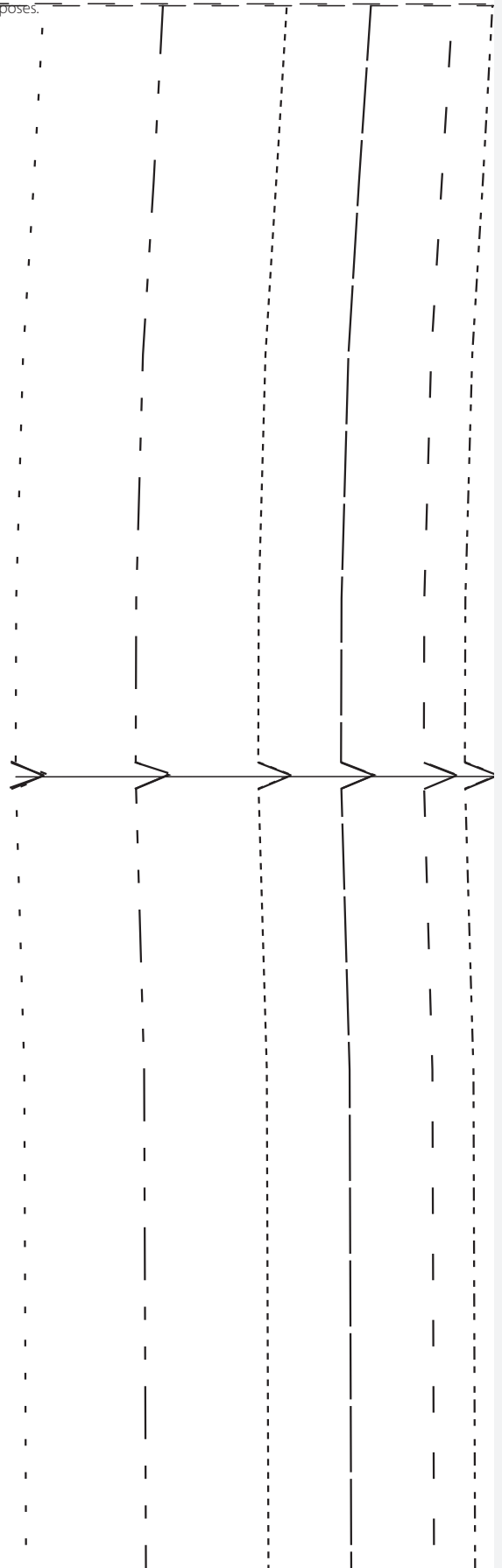


HOW TO PRINT THIS PATTERN

Print out this 30-page PDF on to A4 paper. Trim away the shaded border from each page and position the pages as below to assemble the pattern...



© Printed in the UK for Simply Sewing magazine. Supplied by Immediate Media Company Ltd, Bristol, BS1 3BN. To be used for individual, private home use only and not for commercial or manufacturing purposes.





Attach back bodice – PART B here

Shorten/lengthen line

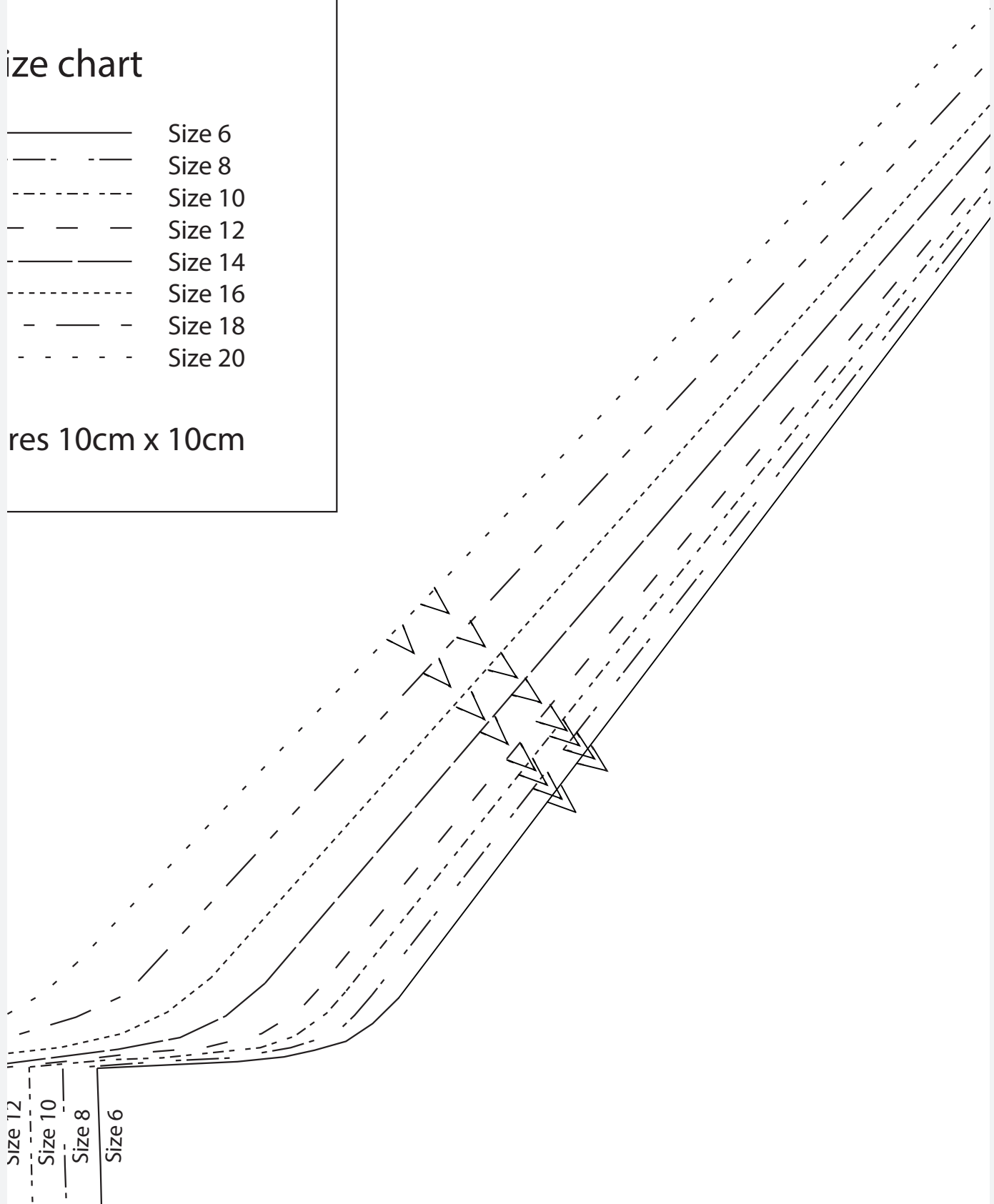
<p>Pattern size</p> <p>_____</p> <p>-----</p> <p>-----</p> <p>-----</p> <p>-----</p> <p>-----</p> <p>-----</p> <p>-----</p> <p>-----</p> <p>-----</p>
<p>Box measure</p>



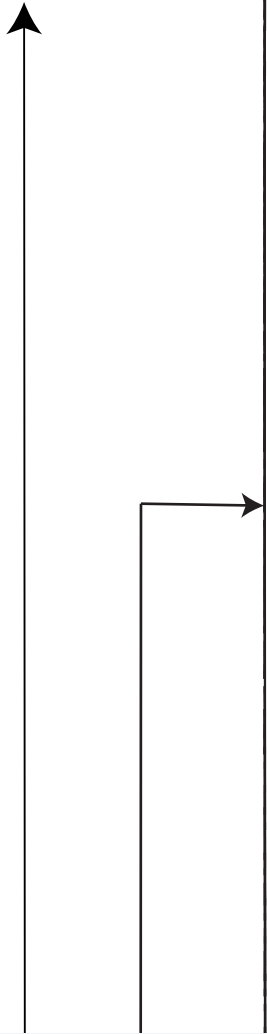
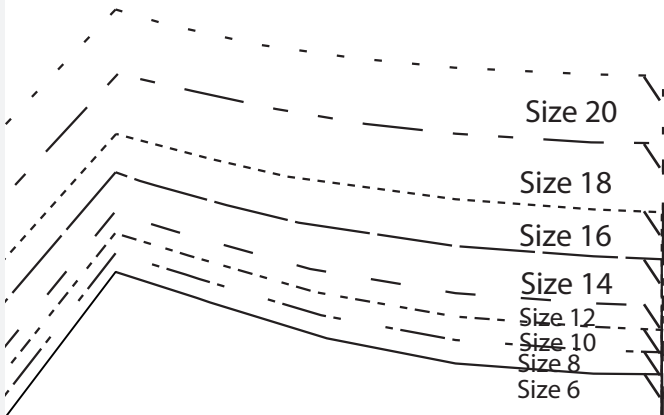
size chart

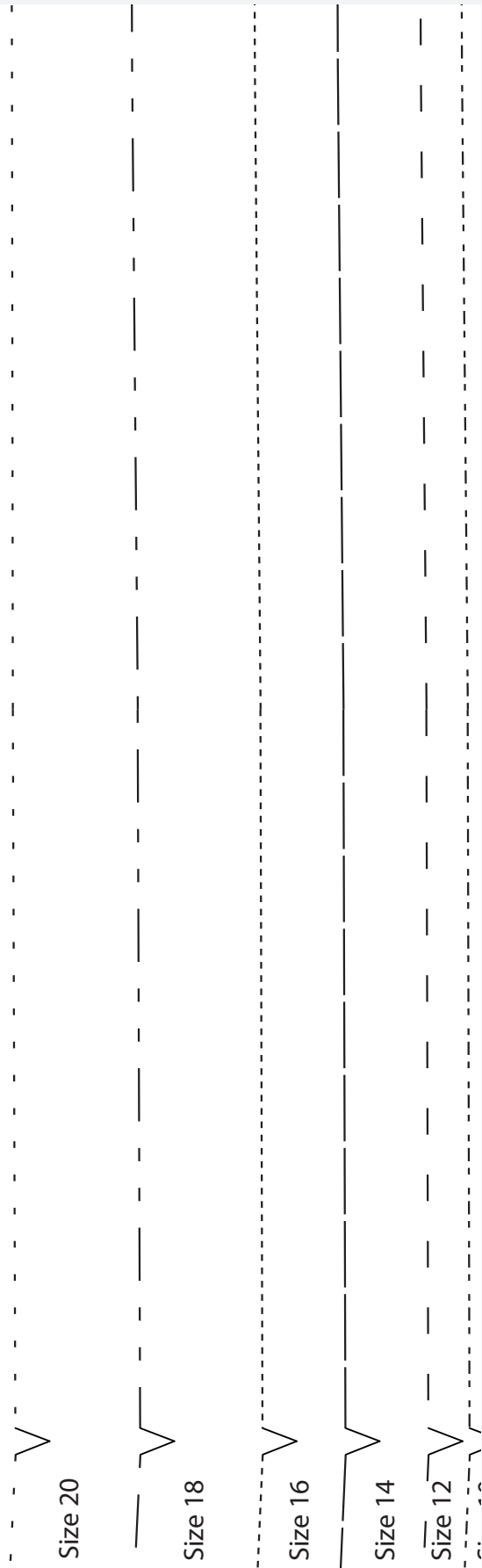
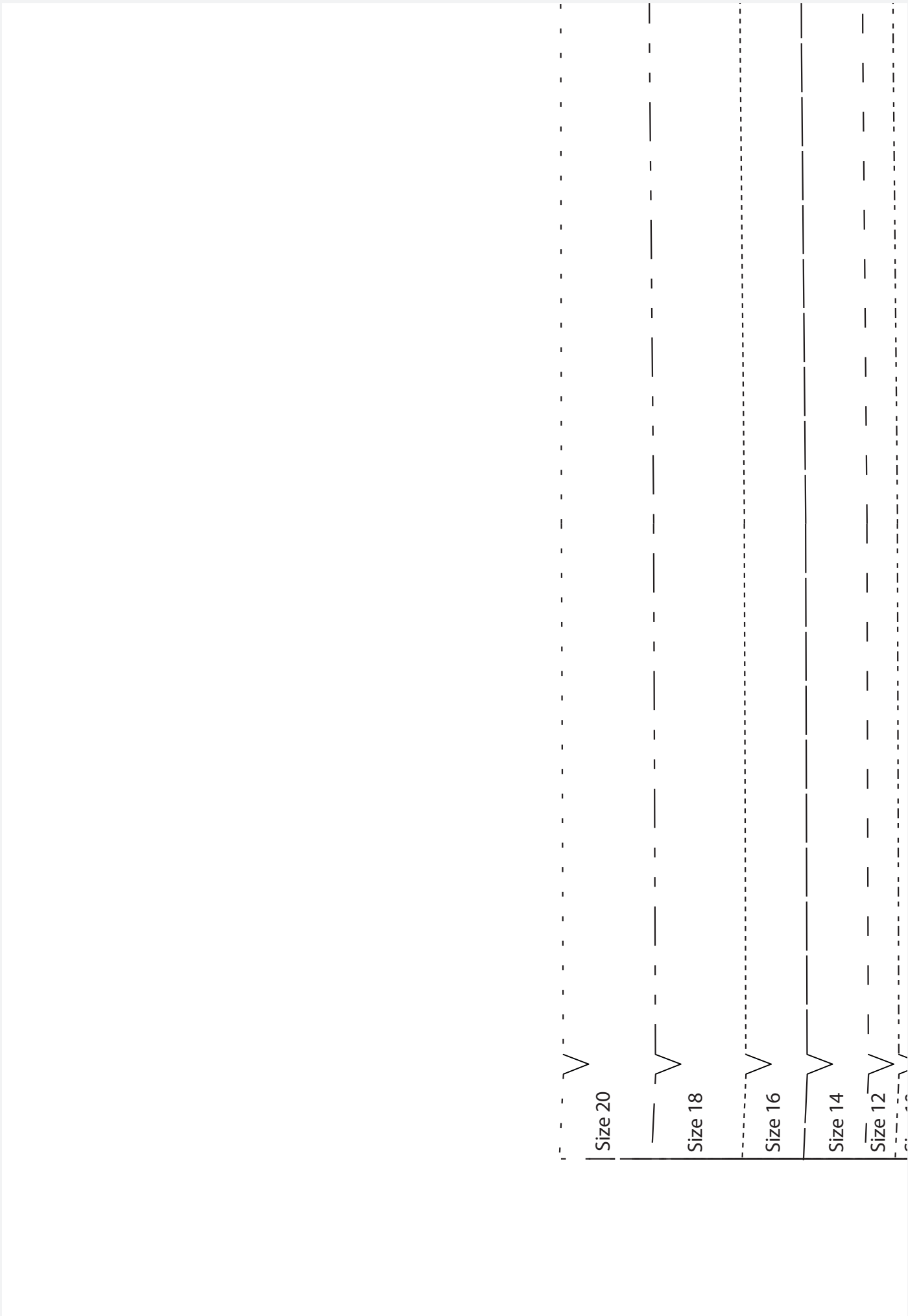
—————	Size 6
- - - - -	Size 8
· · · · ·	Size 10
- - - - -	Size 12
—————	Size 14
· · · · ·	Size 16
- - - - -	Size 18
· · · · ·	Size 20

res 10cm x 10cm



Size 12
Size 10
Size 8
Size 6





Size 20

Size 18

Size 16

Size 14

Size 12

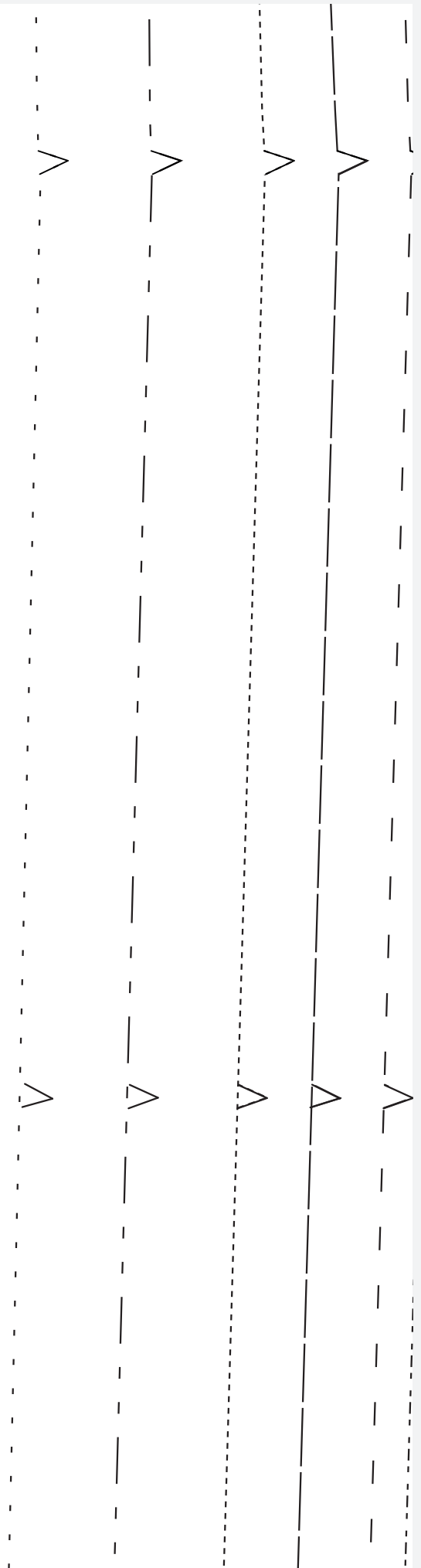
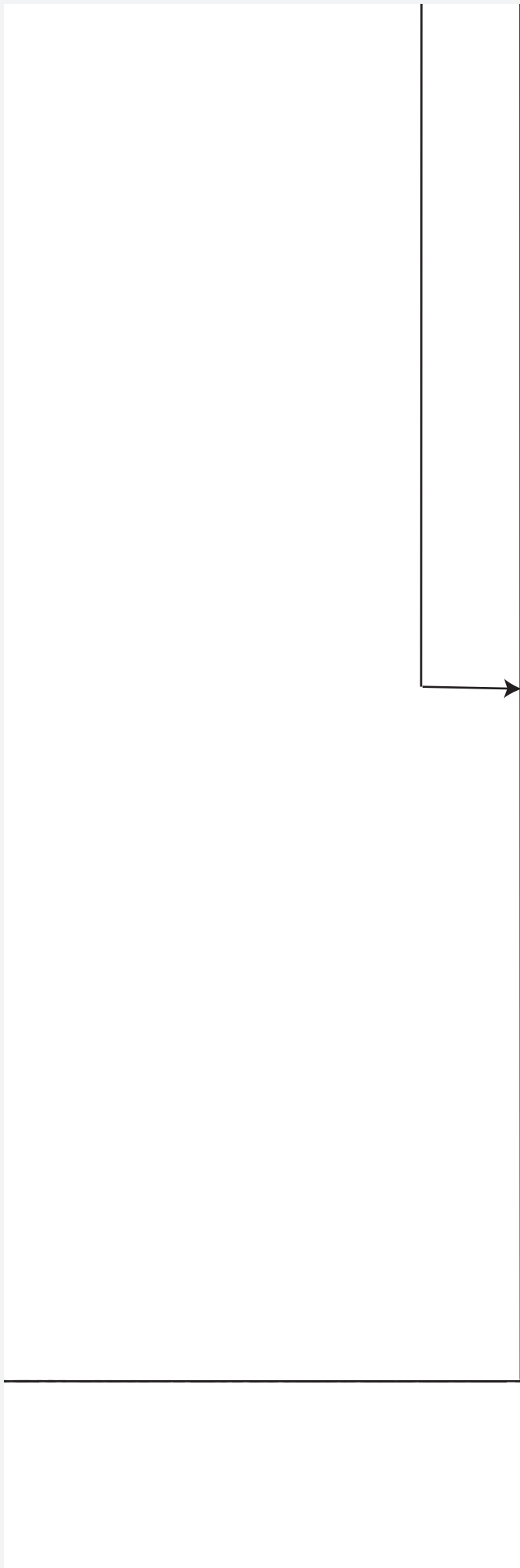
Size 10
Size 8
Size 6

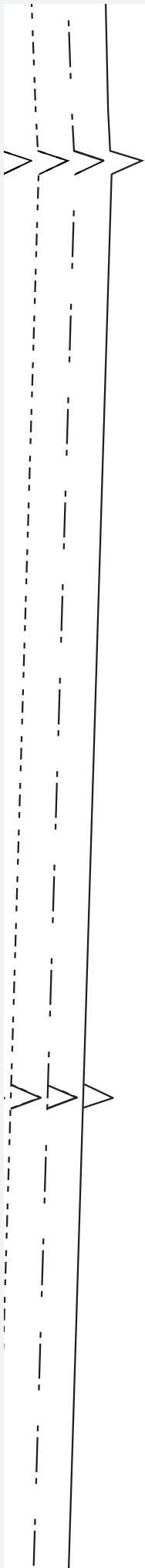
B

THE JODIE DRESS

Back bodice - PART B

Cut 1 on fold





B

THE JODIE DRESS

Back bodice – PART A

Cut 1 on fold

Centre back

Foldline

Grainline

— — — — —

Attach back bodice – PART A here





WWW.SIMPLYSEWINGMAG.COM

© Printed in the UK for Simply Sewing magazine. Supplied by Immediate Media Company Ltd, Bristol, BS1 3BN. To be used for individual, private home use only and not for commercial or manufacturing purposes.

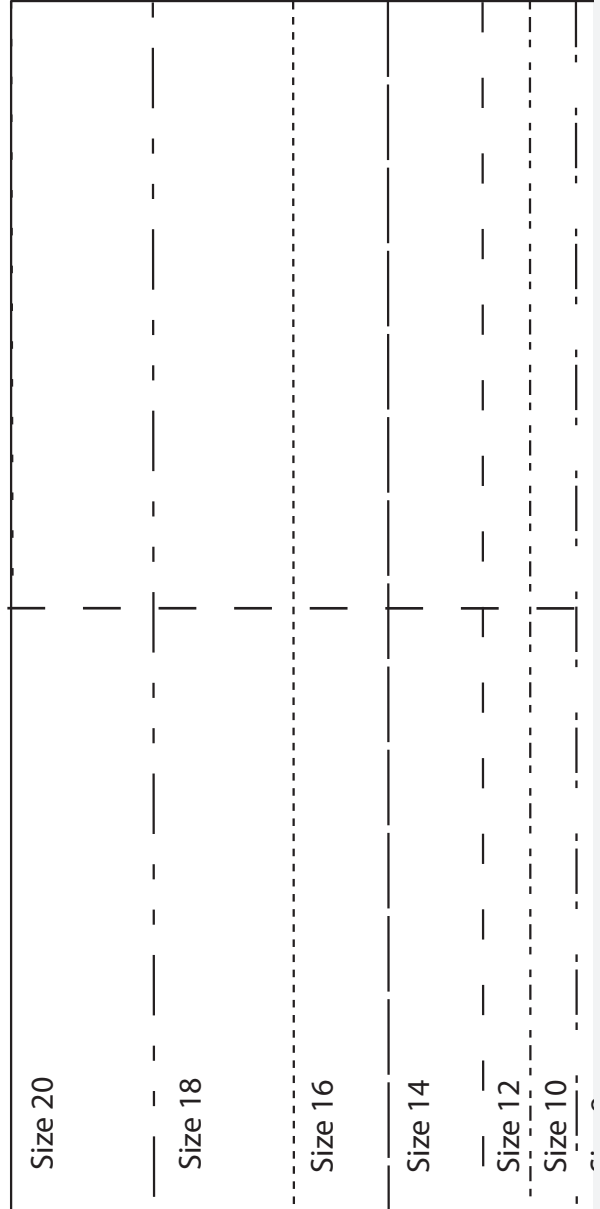
Grainline

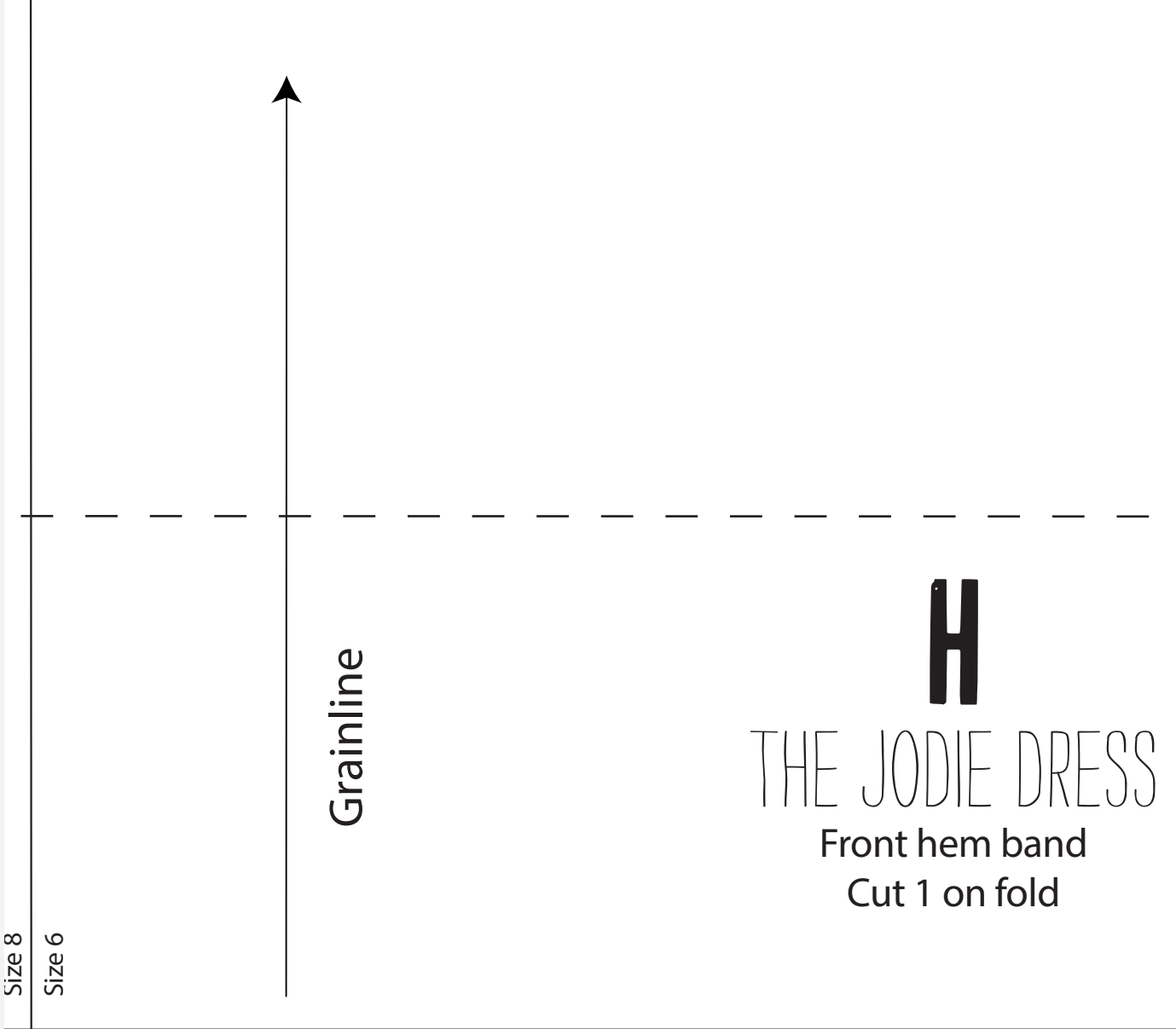
J

THE JODIE DRESS

Patch pocket

Cut 1 pair





Size 8

Size 6

Grainline

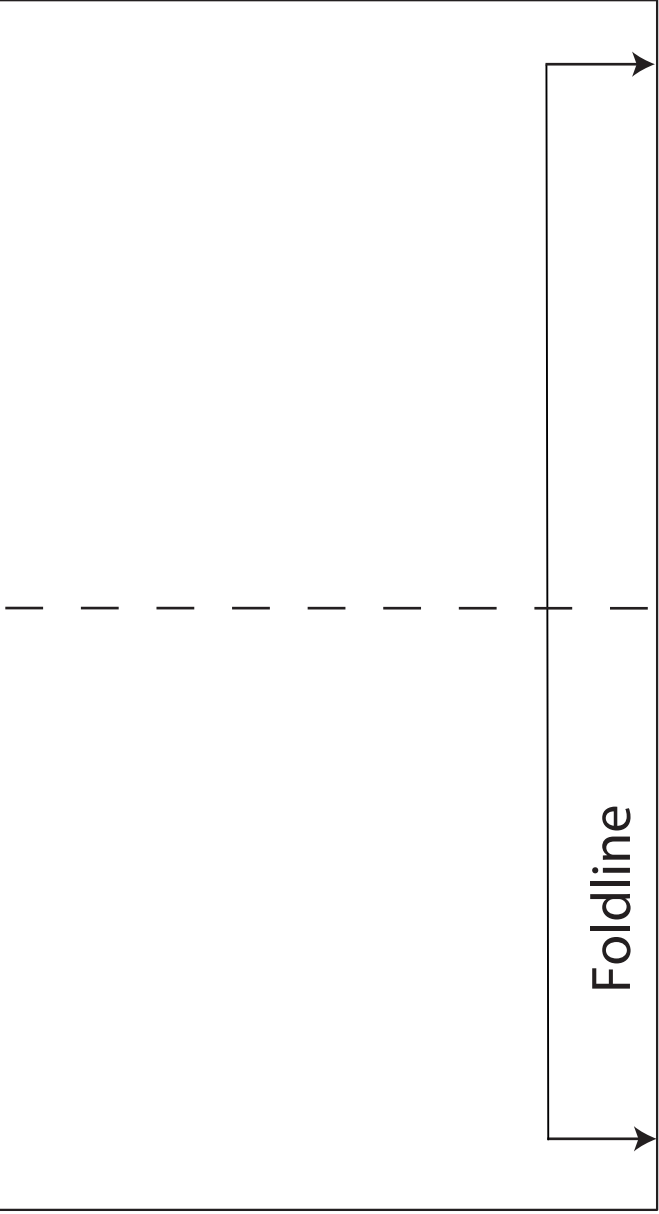
H

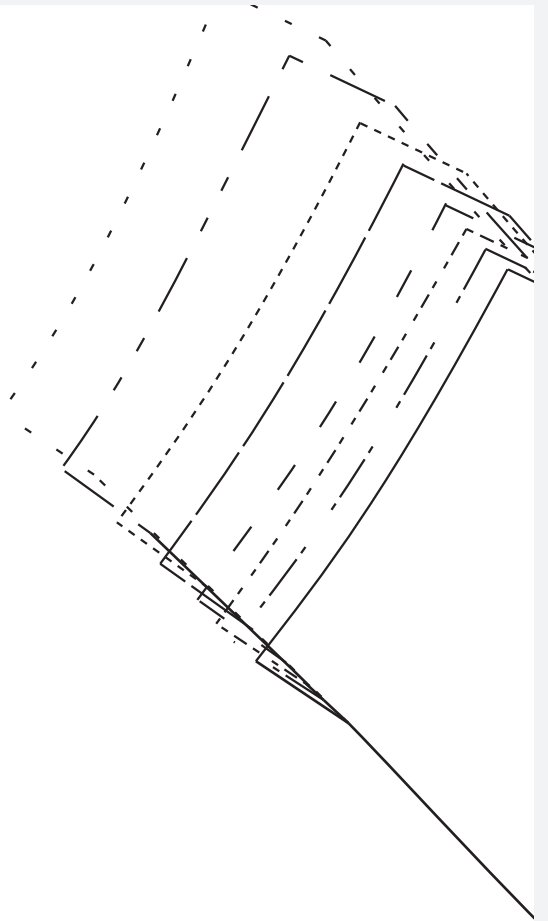
THE JODIE DRESS

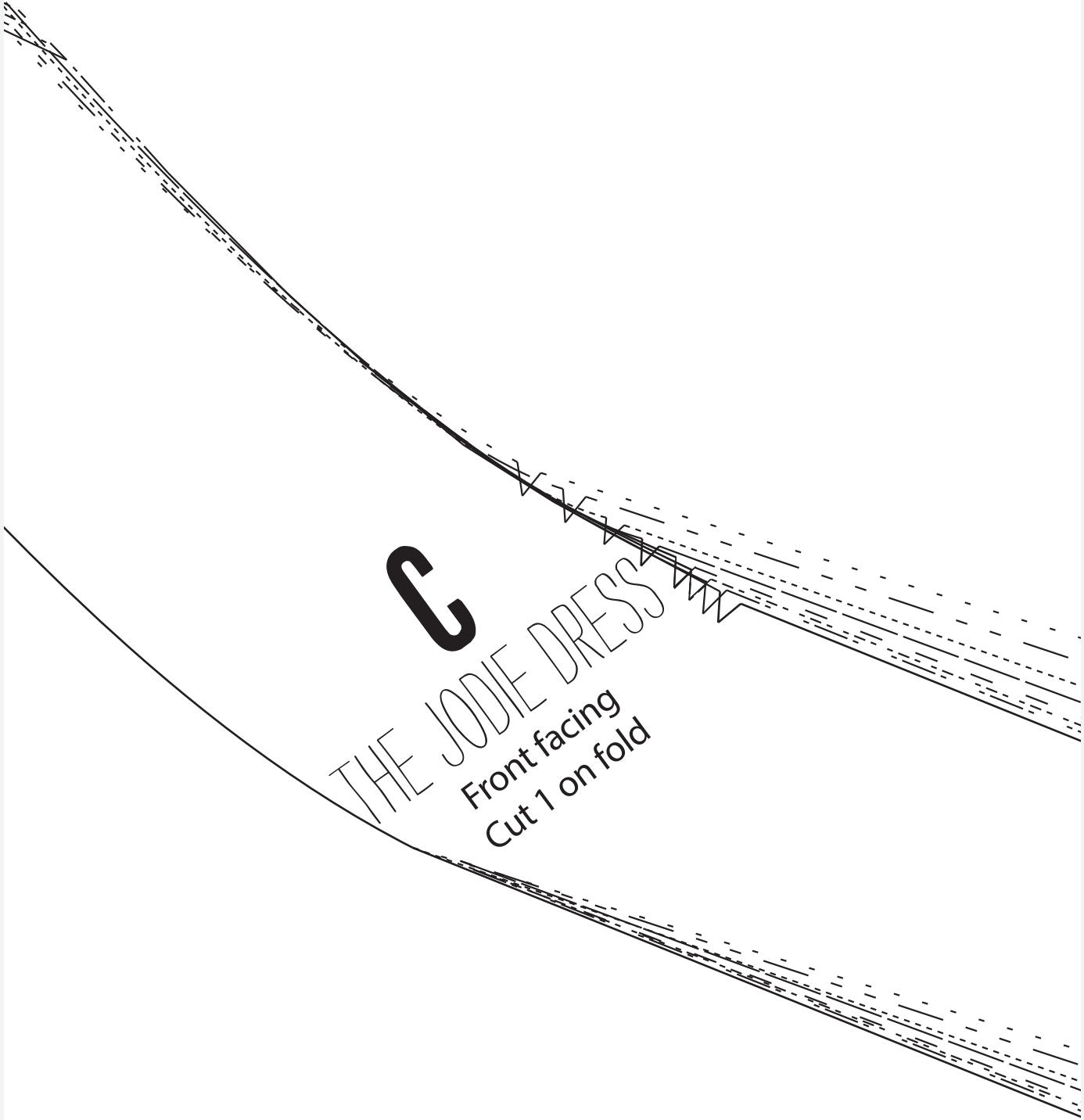
Front hem band

Cut 1 on fold







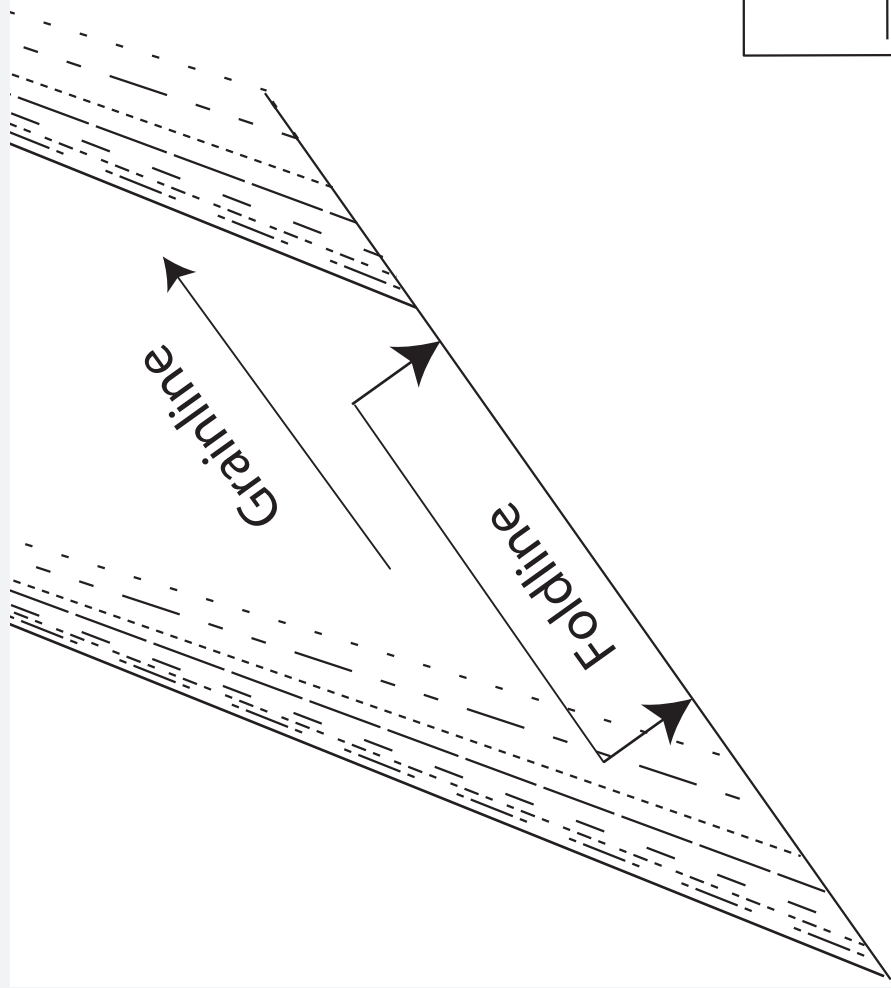


C

THE JODIE DRESS

Front facing
Cut 1 on fold

	Size 6
	Size 8
	Size 10
	Size 12
	Size 14
	Size 16
	Size 18
	Size 20



Grainline



THE JODIE DRESS

Back hem band
Cut 1 on fold

Box measures 10cm x 10cm

07 3716

