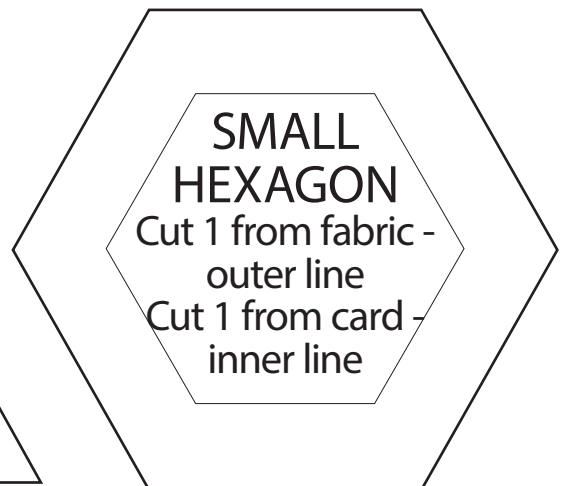
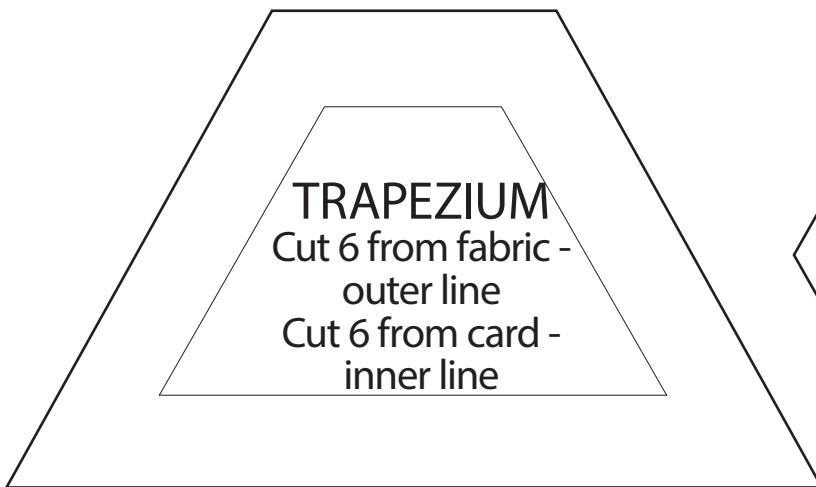
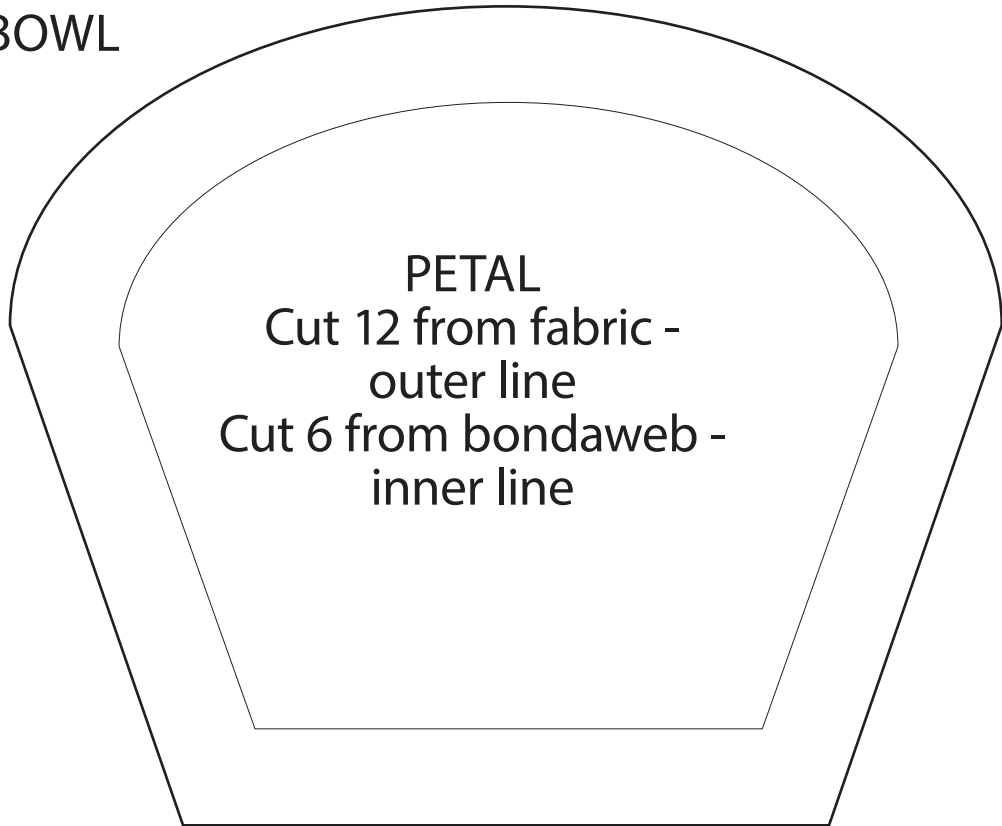


TEMPLATES

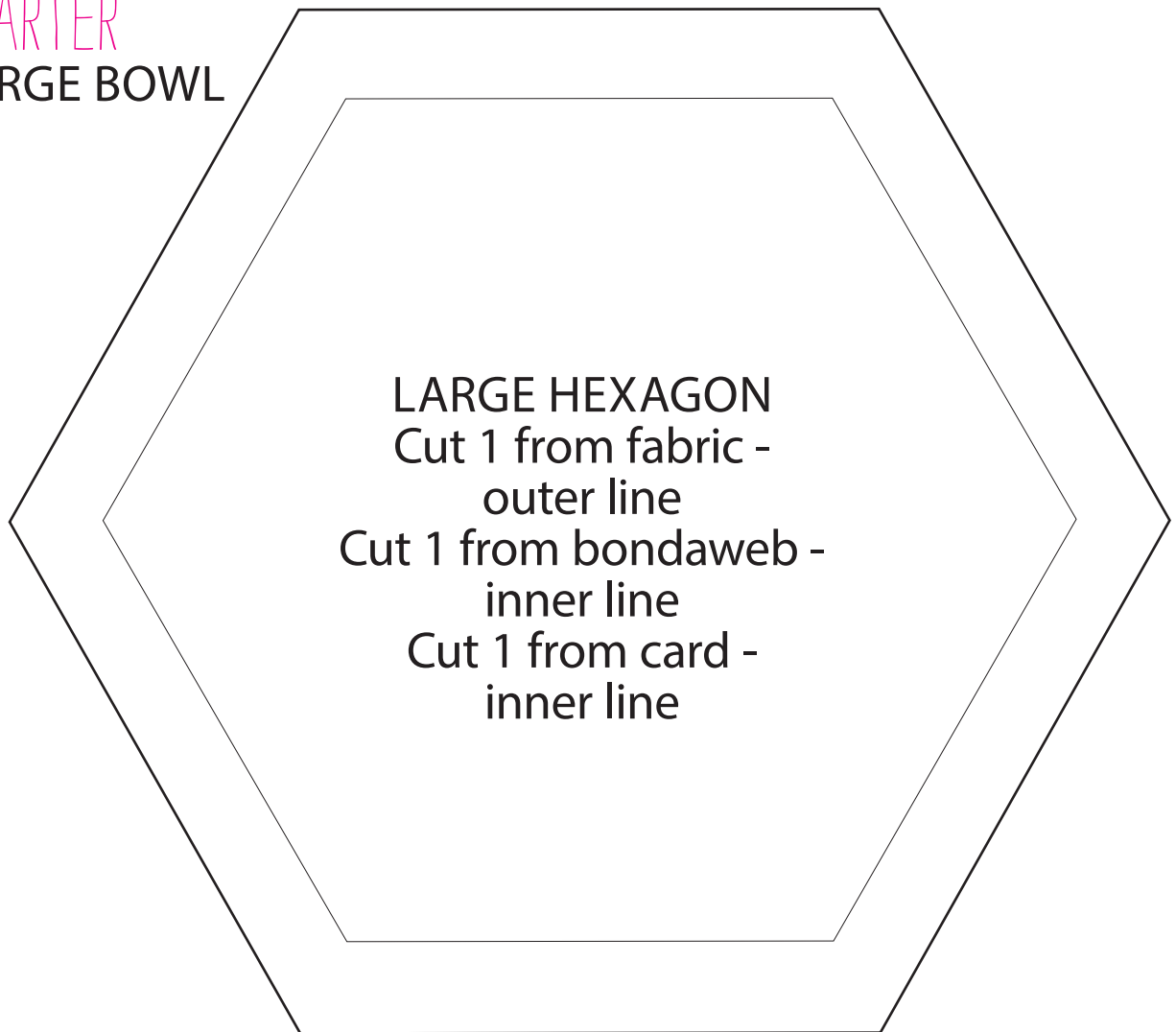
Here are the templates you will need to make some of the projects in *Simply Sewing* issue 45.

FAST FAT QUARTER LARGE BOWL



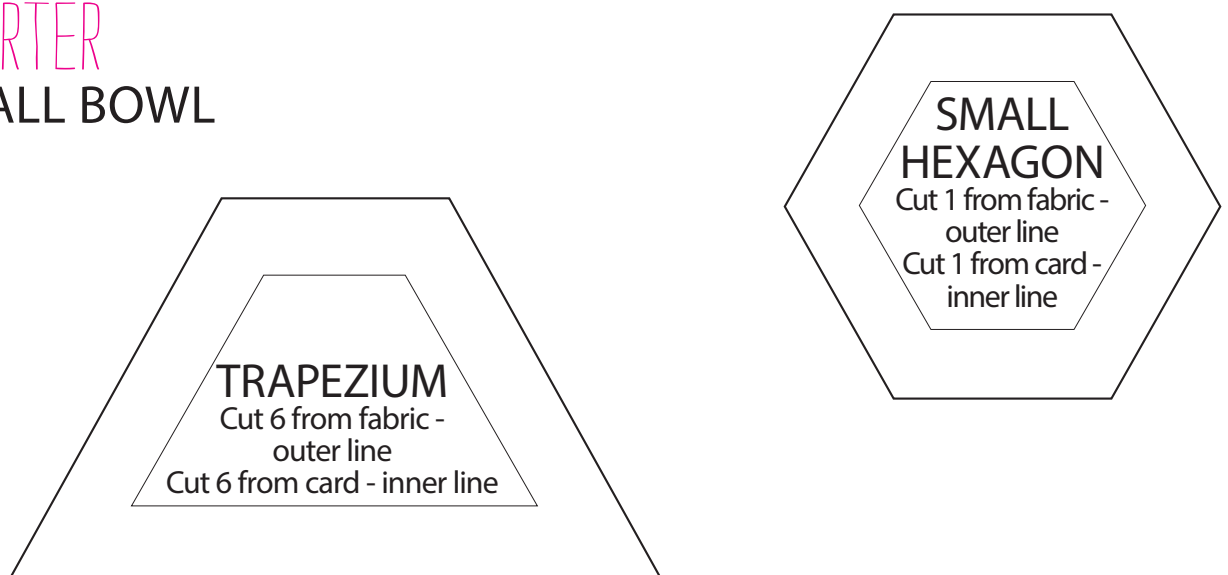
FAST FAT
QUARTER

LARGE BOWL

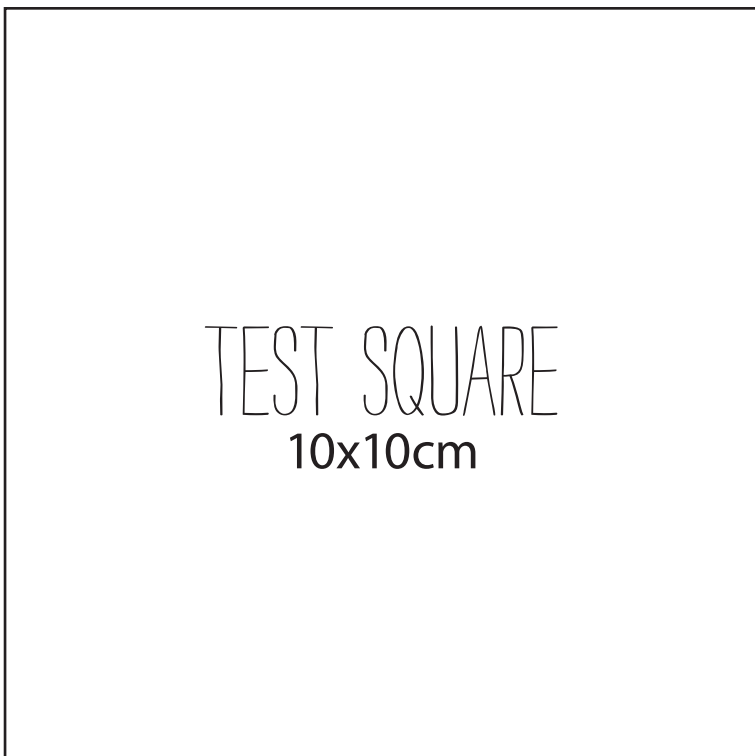
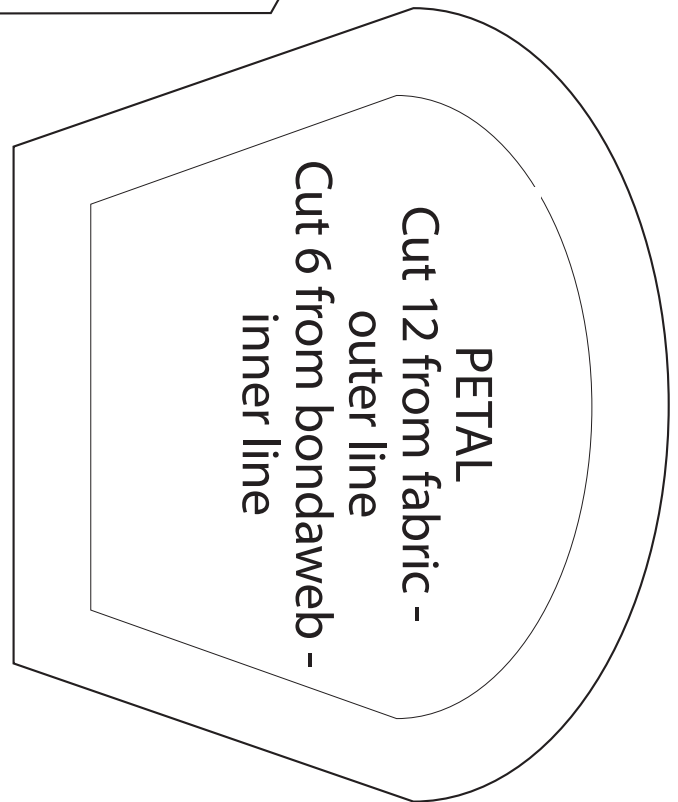
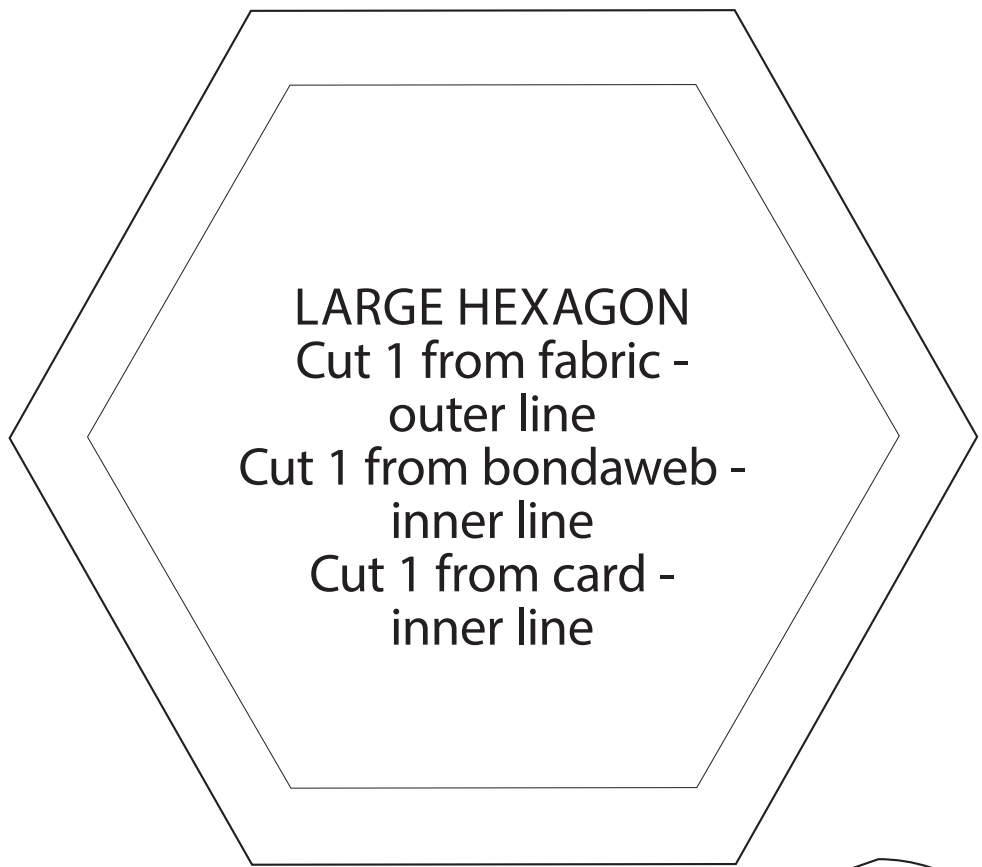


FAST FAT
QUARTER

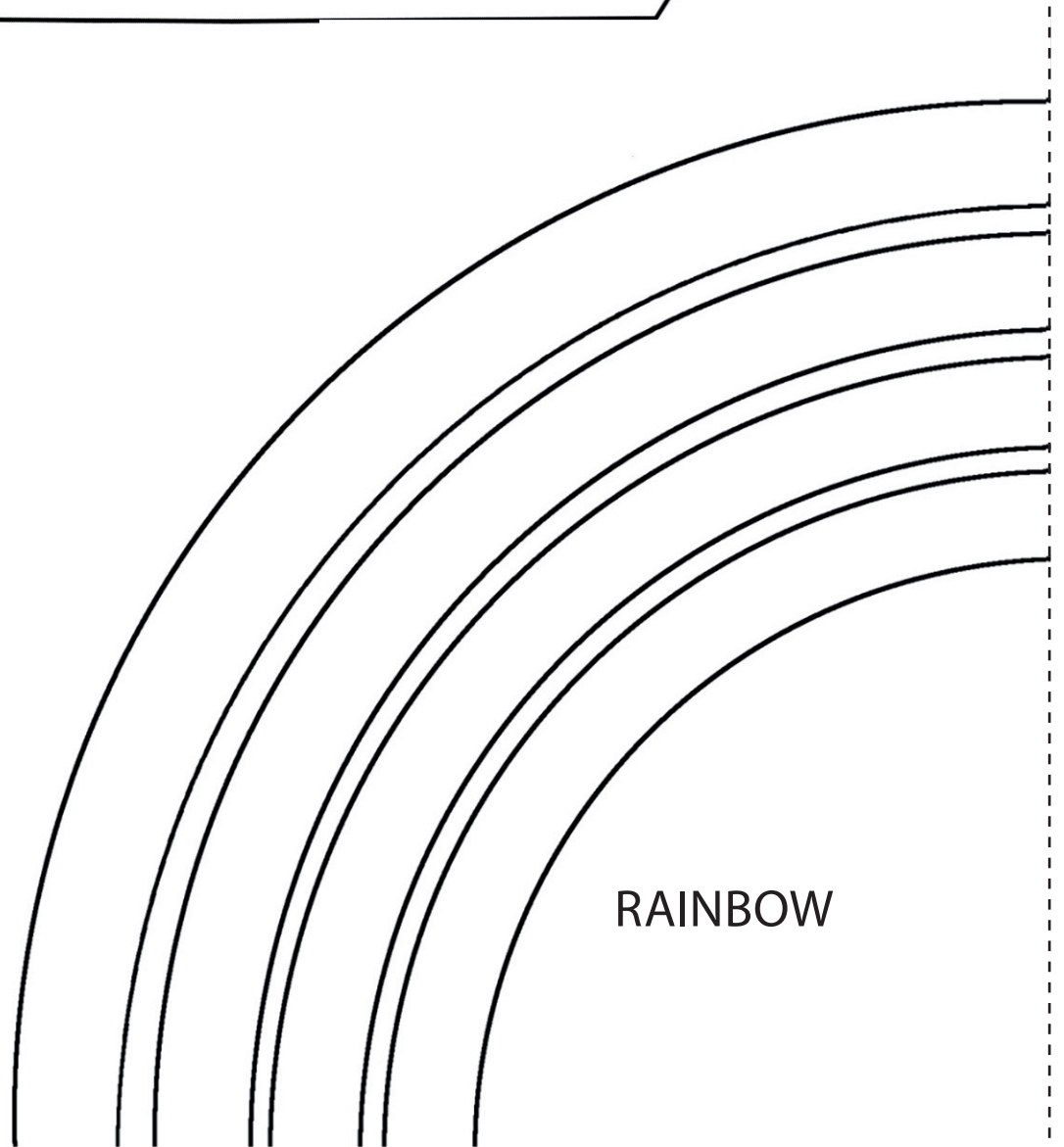
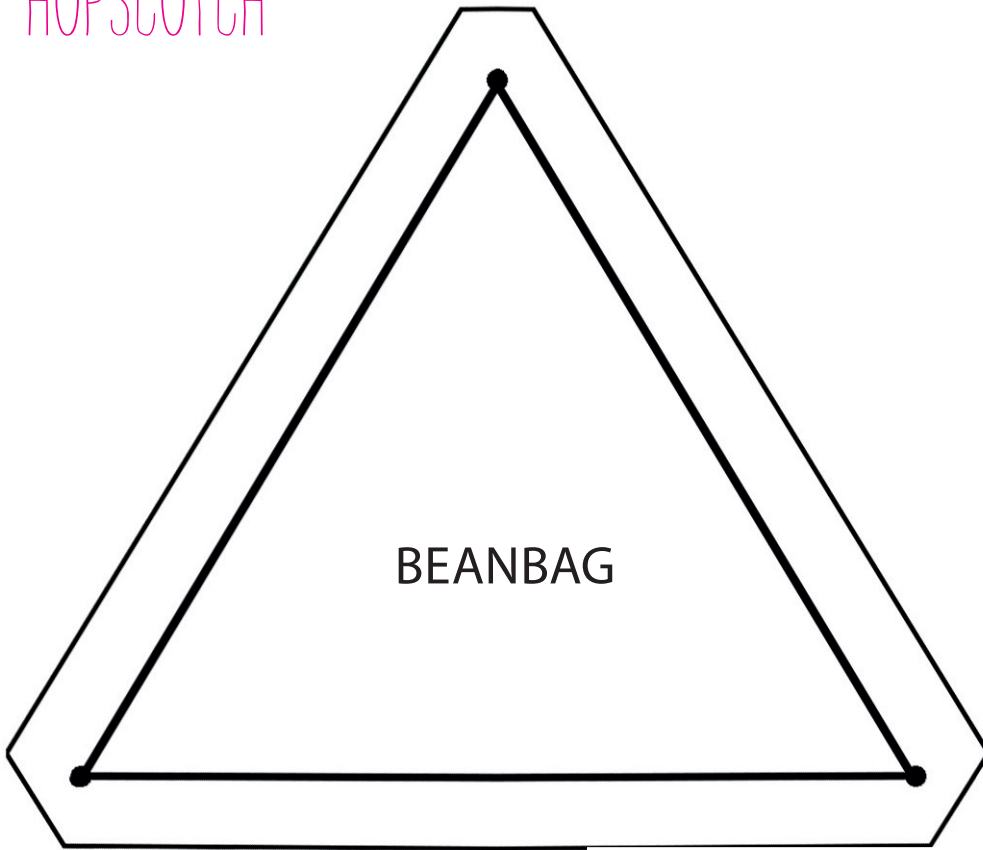
SMALL BOWL



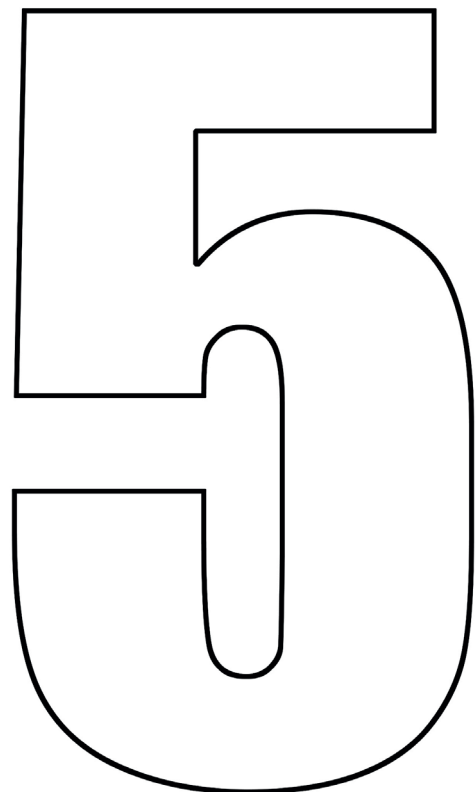
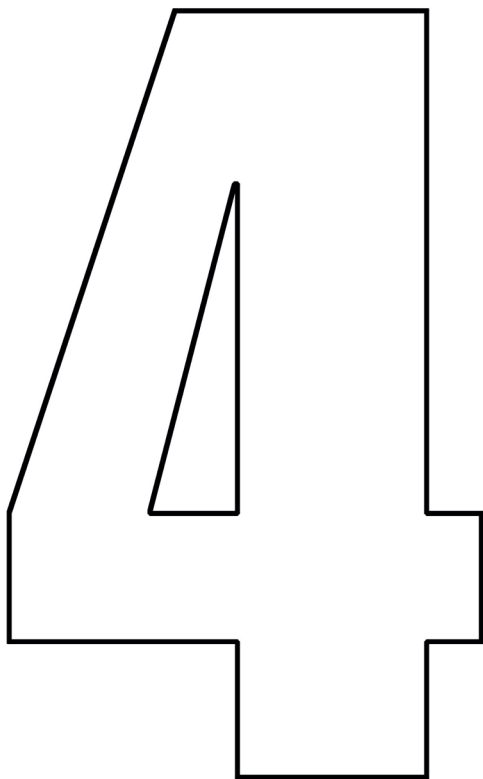
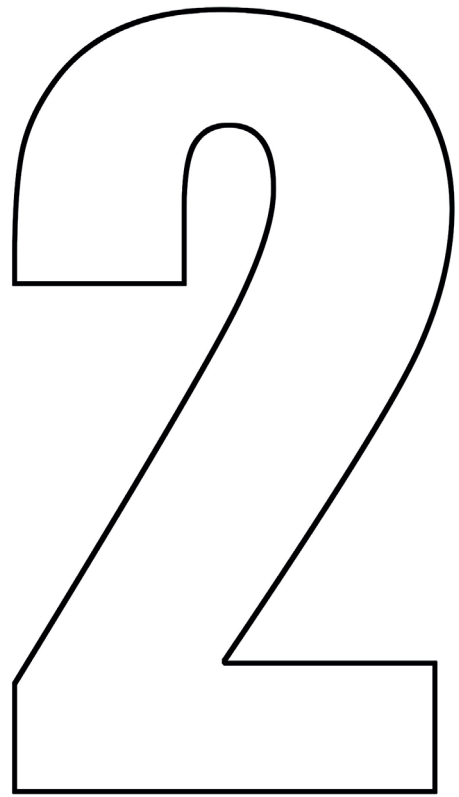
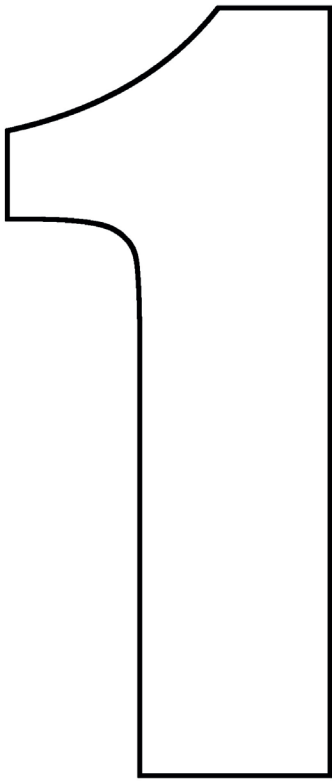
FAST FAT
QUARTER
SMALL
BOWL



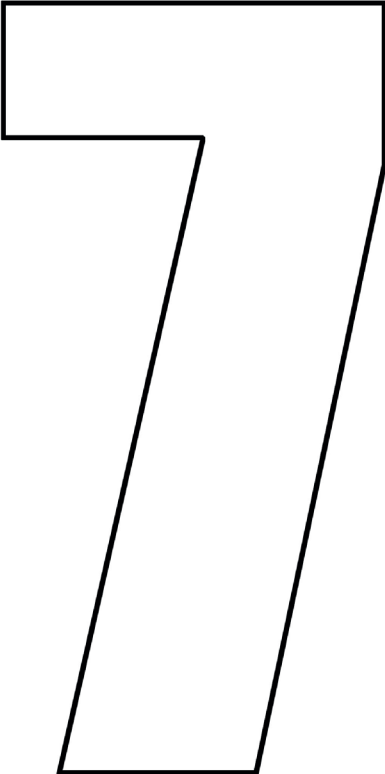
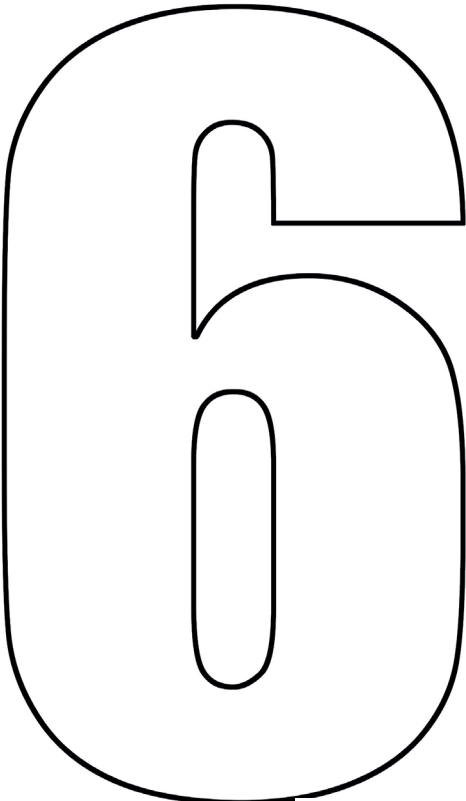
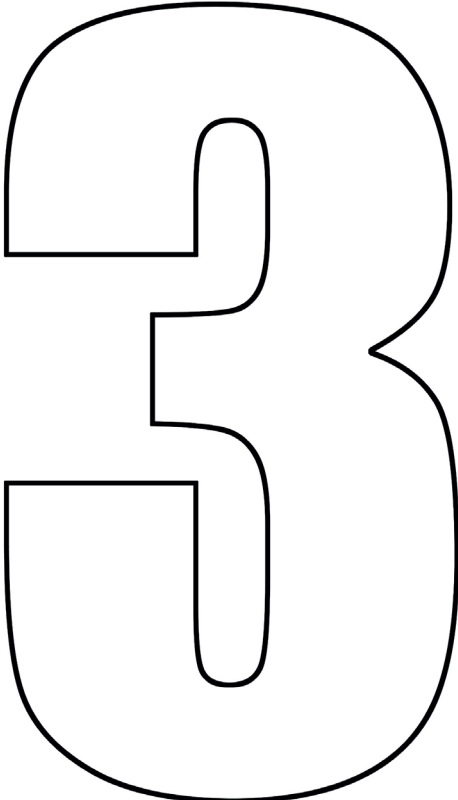
HOPSCOTCH



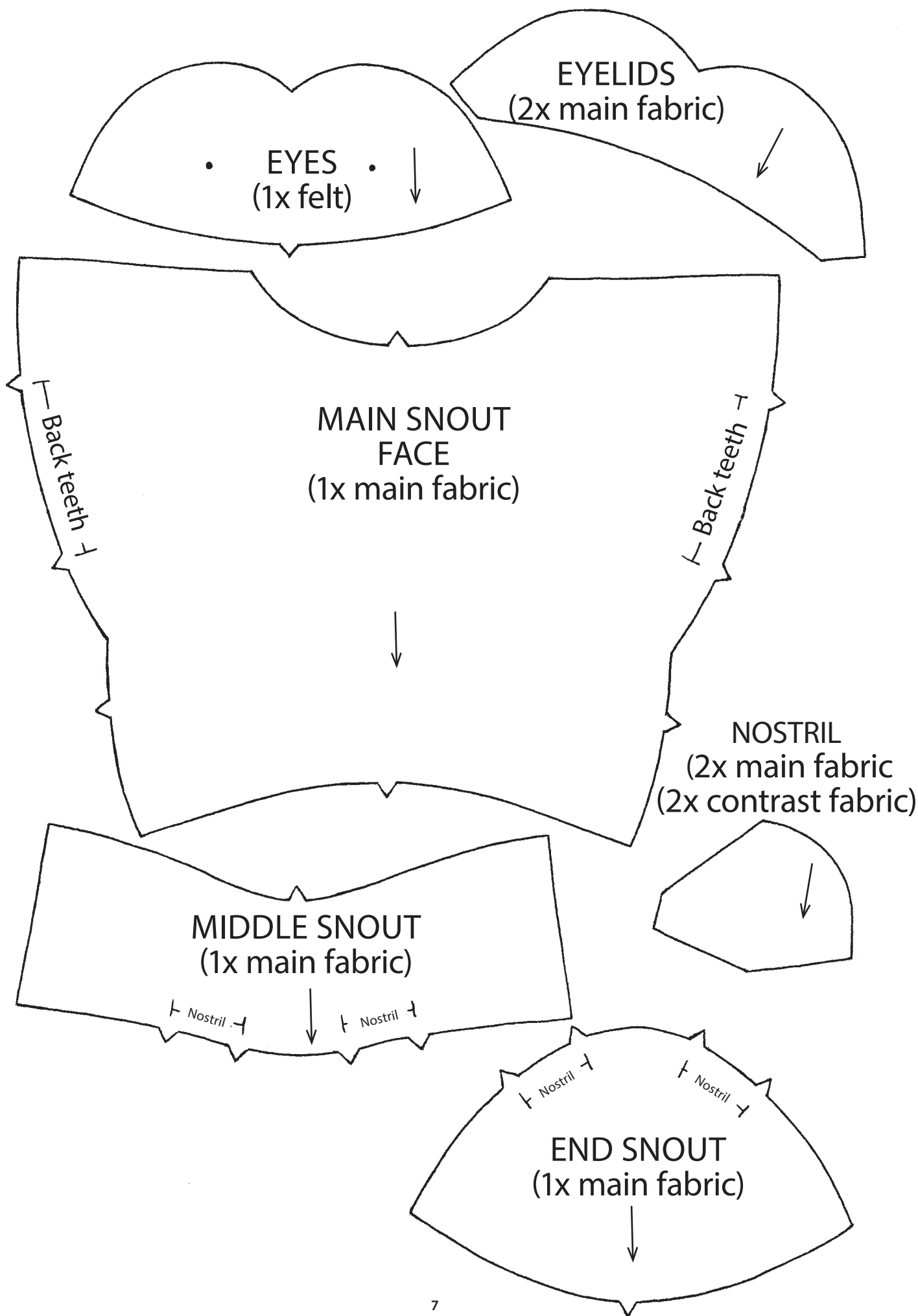
HOPSCOTCH
NUMBERS



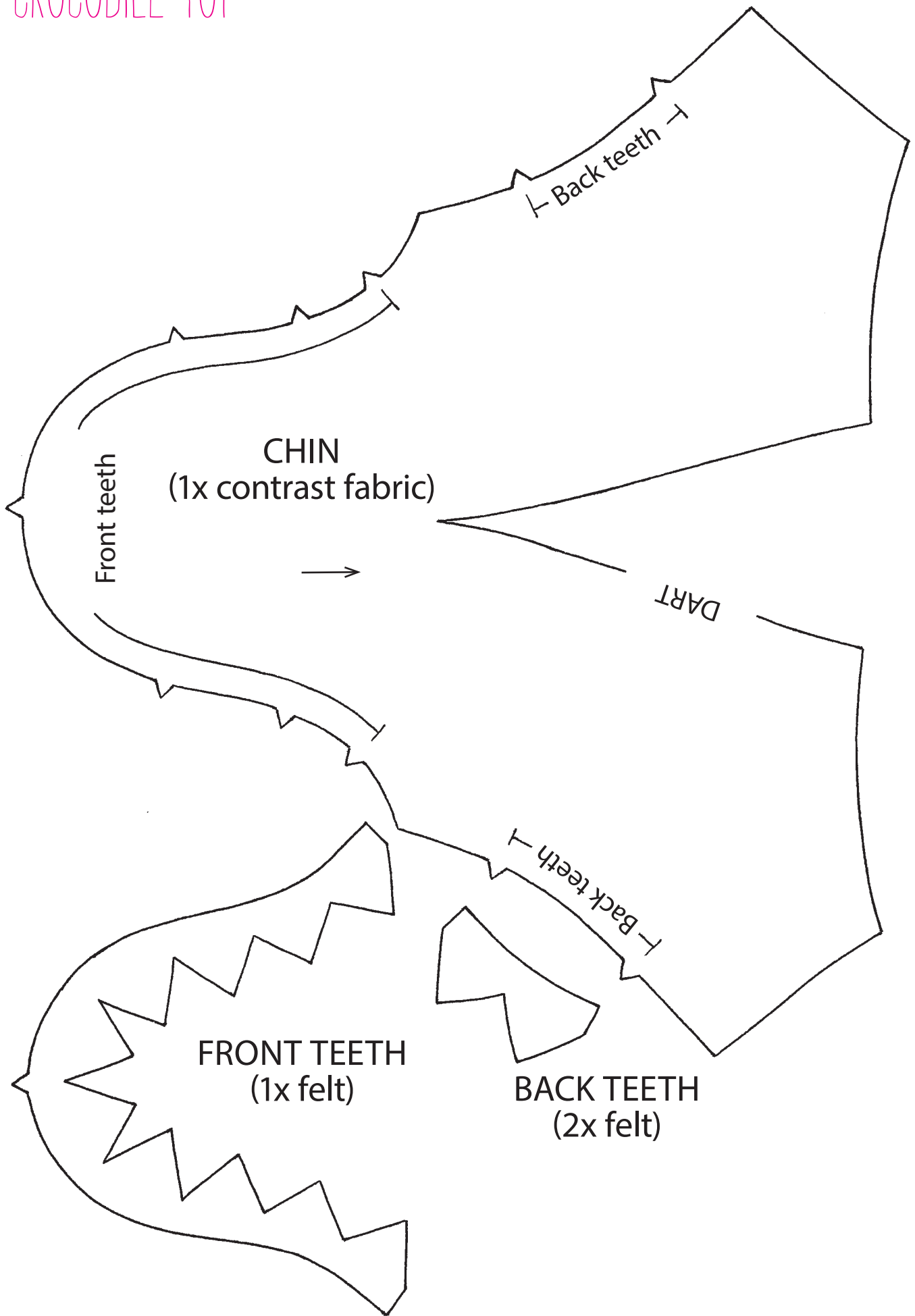
HOPSCOTCH
NUMBERS



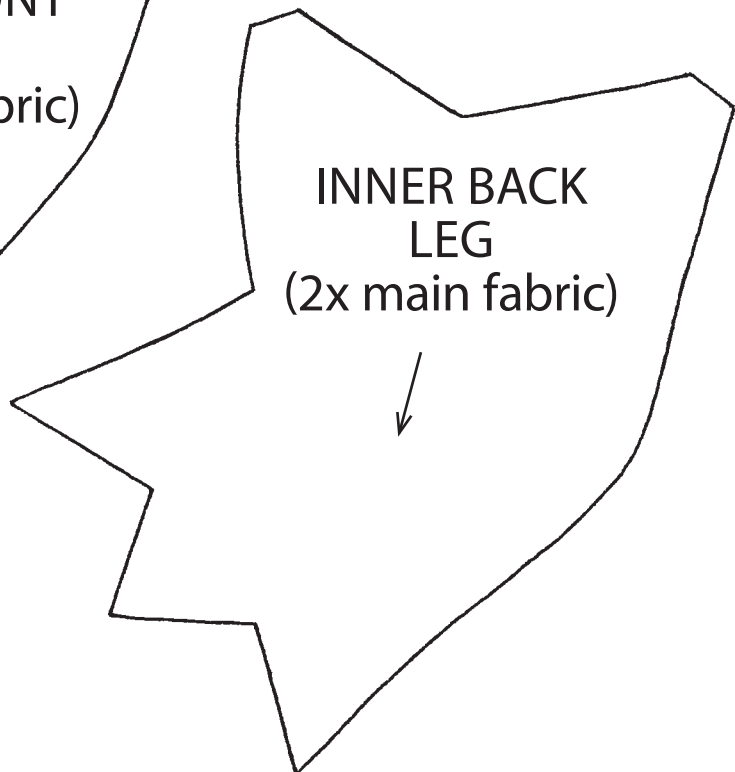
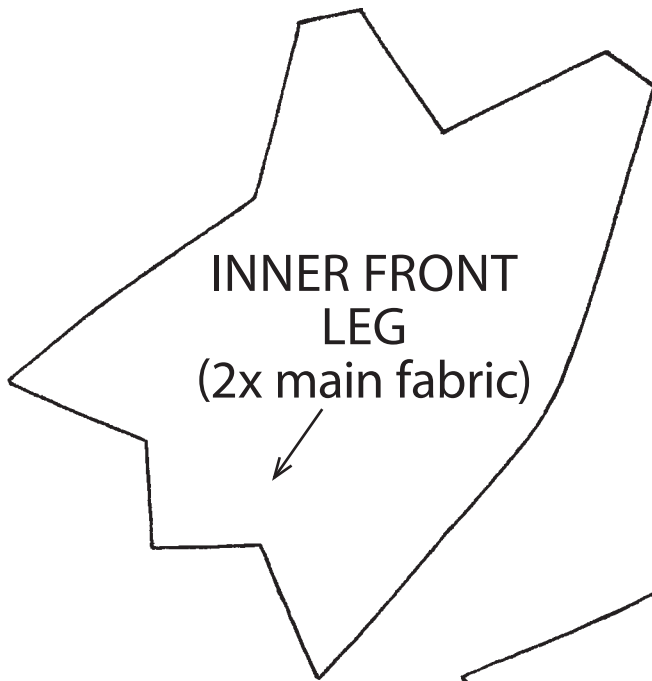
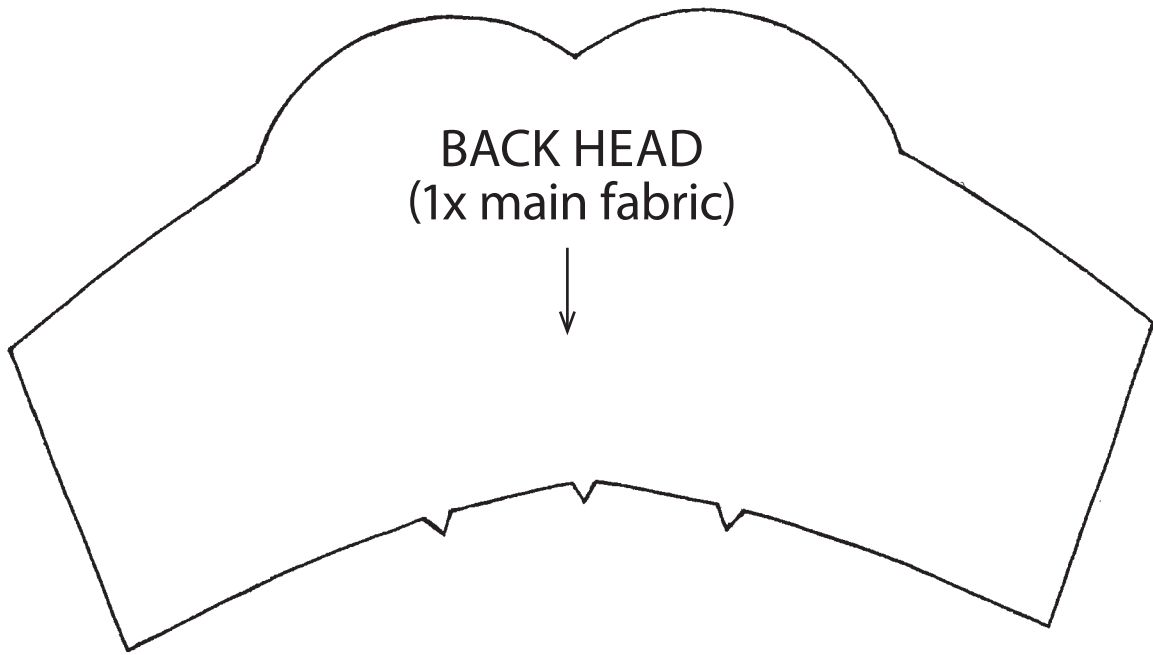
CROCODILE TOY



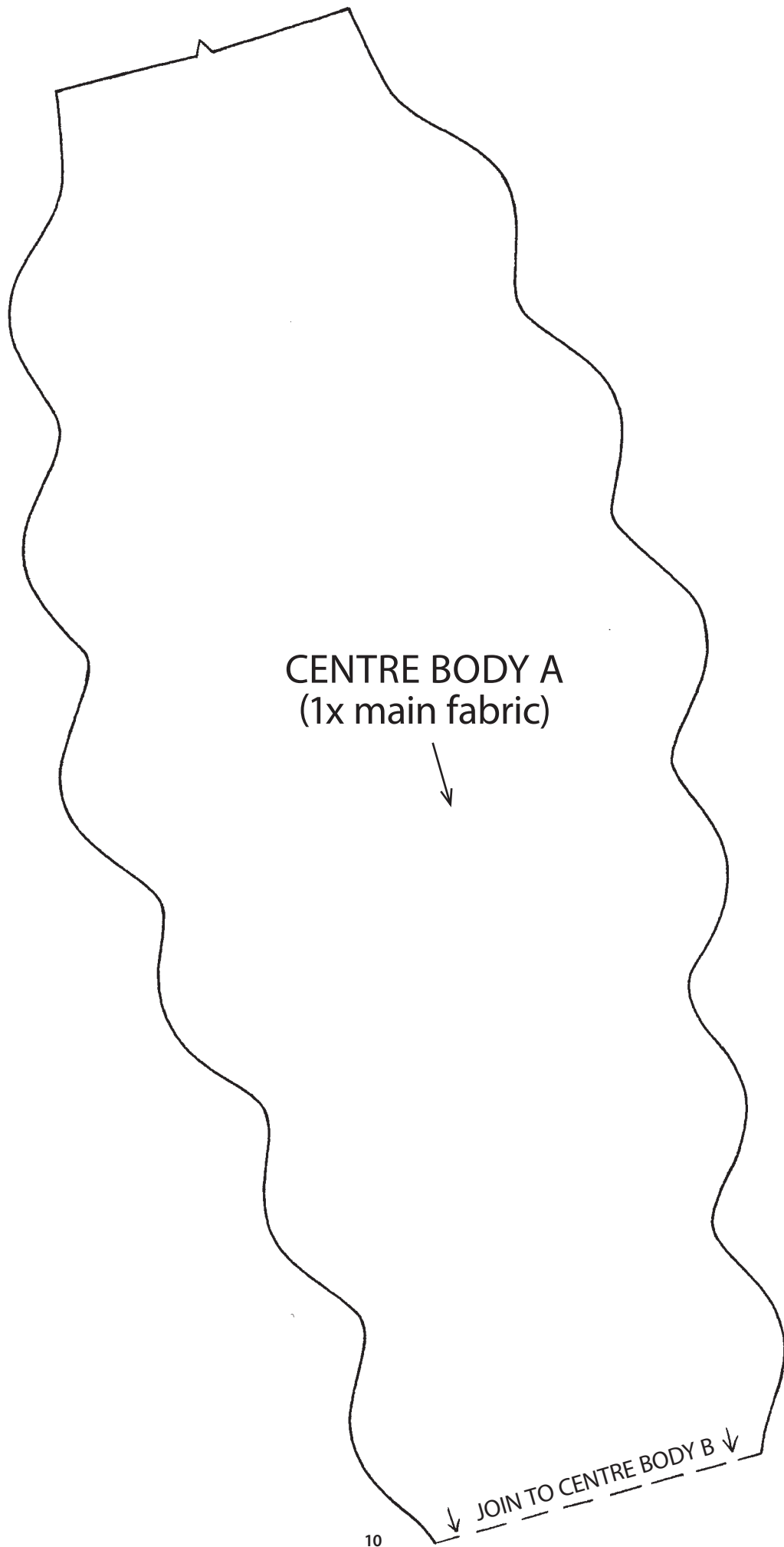
CROCODILE TOY



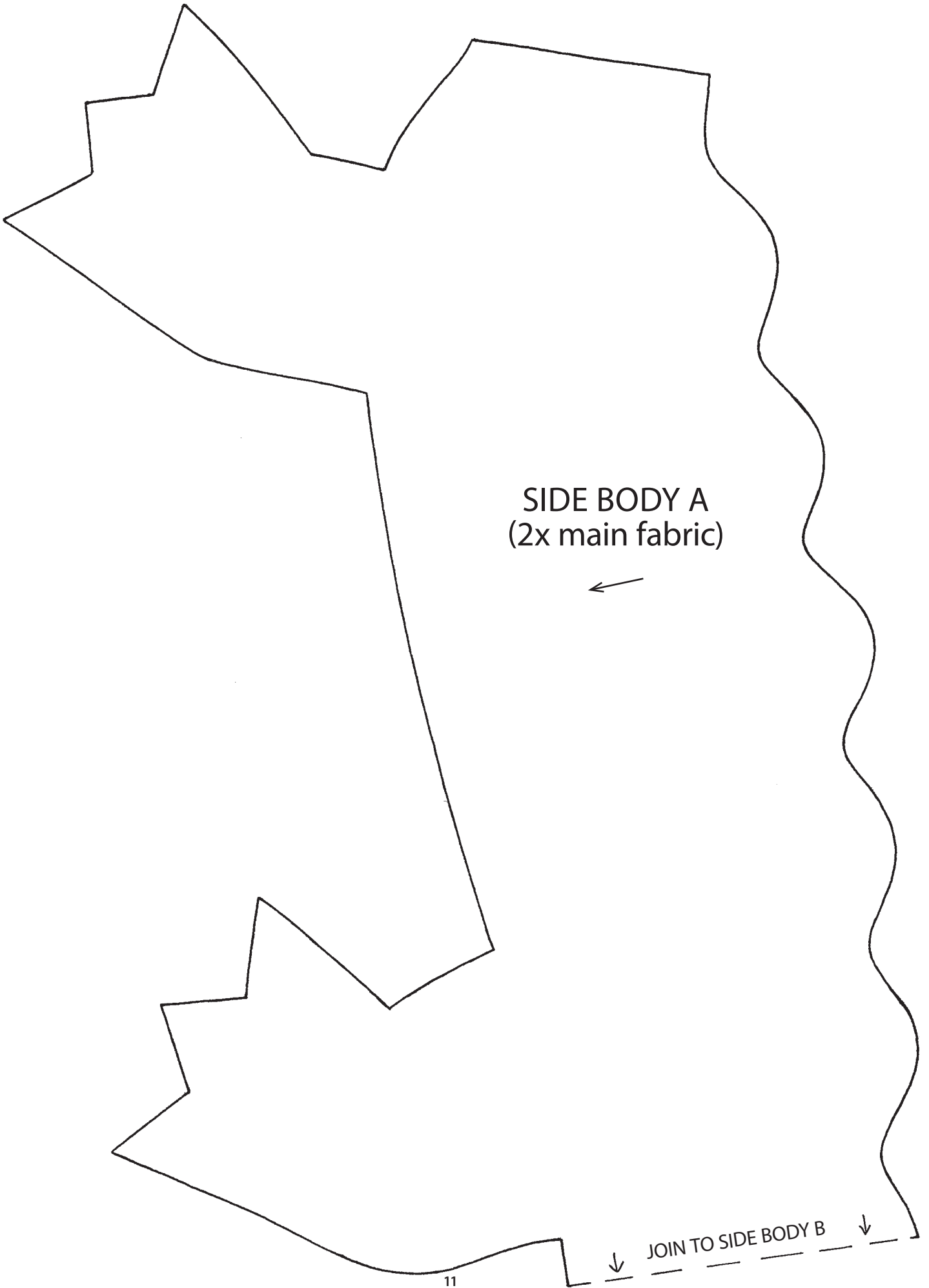
CROCODILE TOY



CROCODILE TOY



CROCODILE TOY

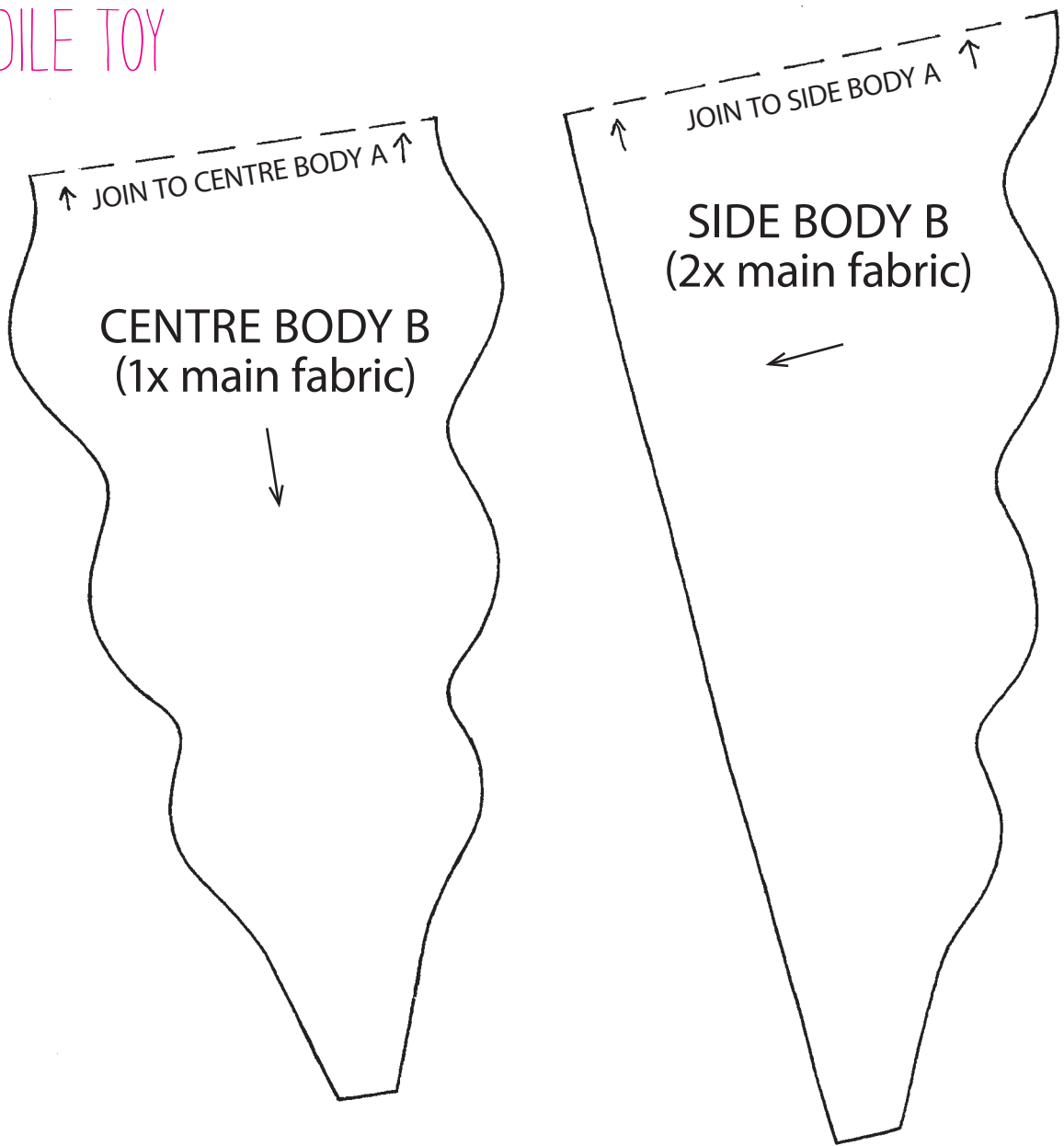


SIDE BODY A
(2x main fabric)



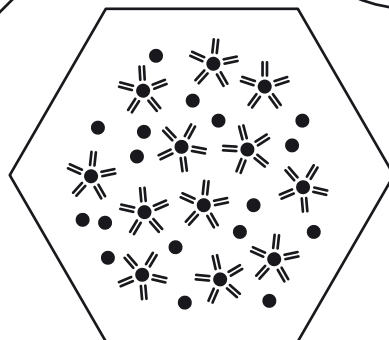
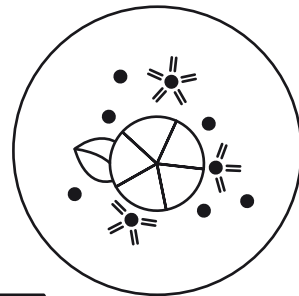
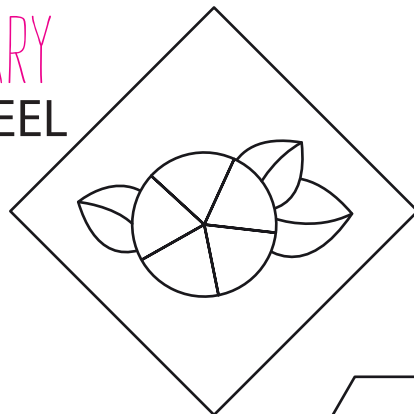
↓ JOIN TO SIDE BODY B ↓

CROCODILE TOY

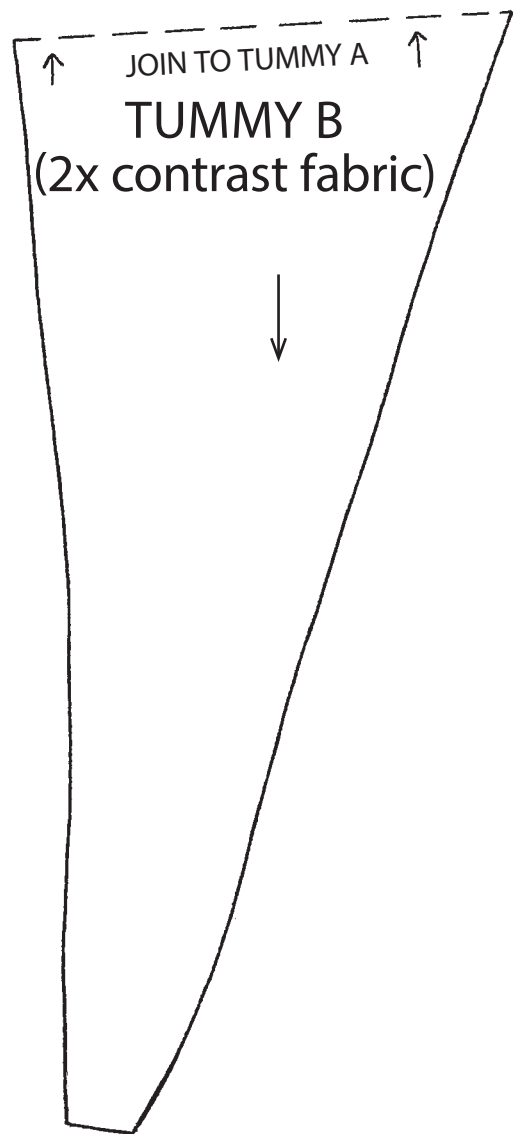
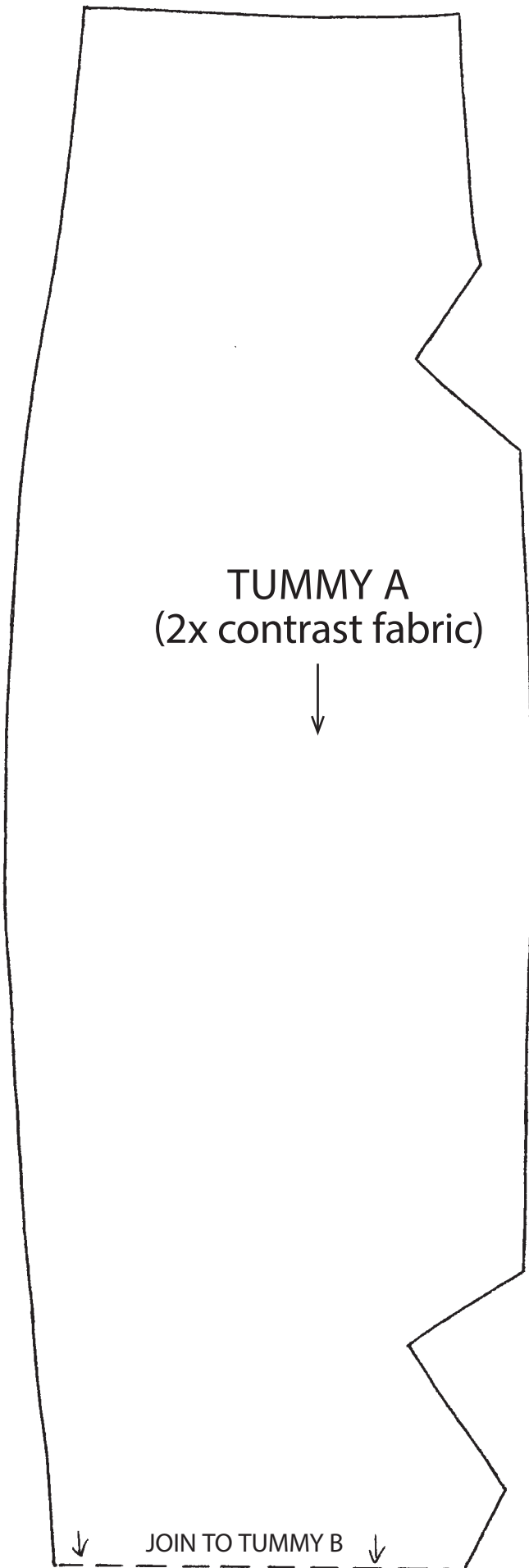


STITCH LIBRARY

WOVEN WHEEL STITCH

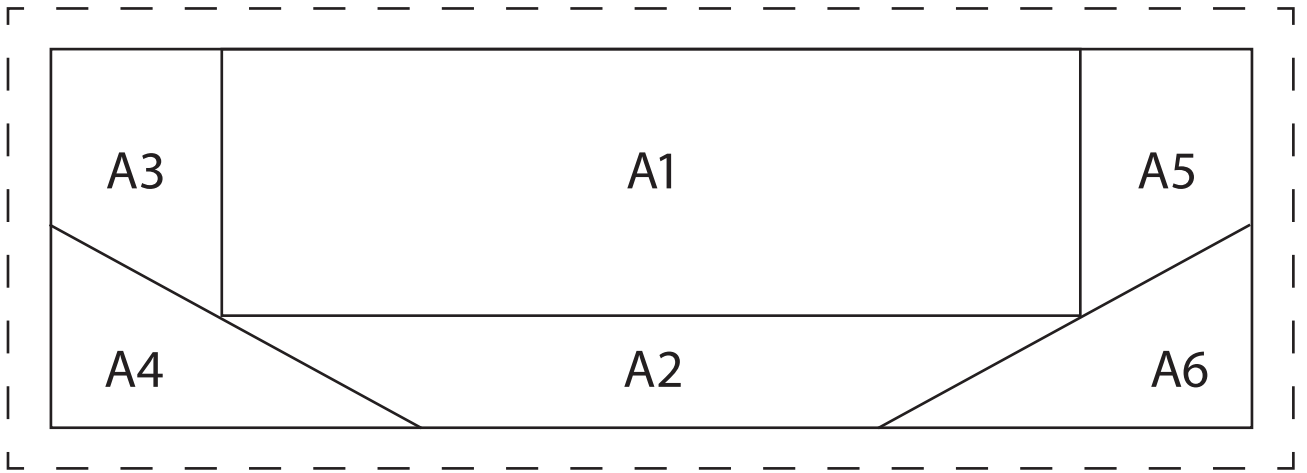


CROCODILE TOY

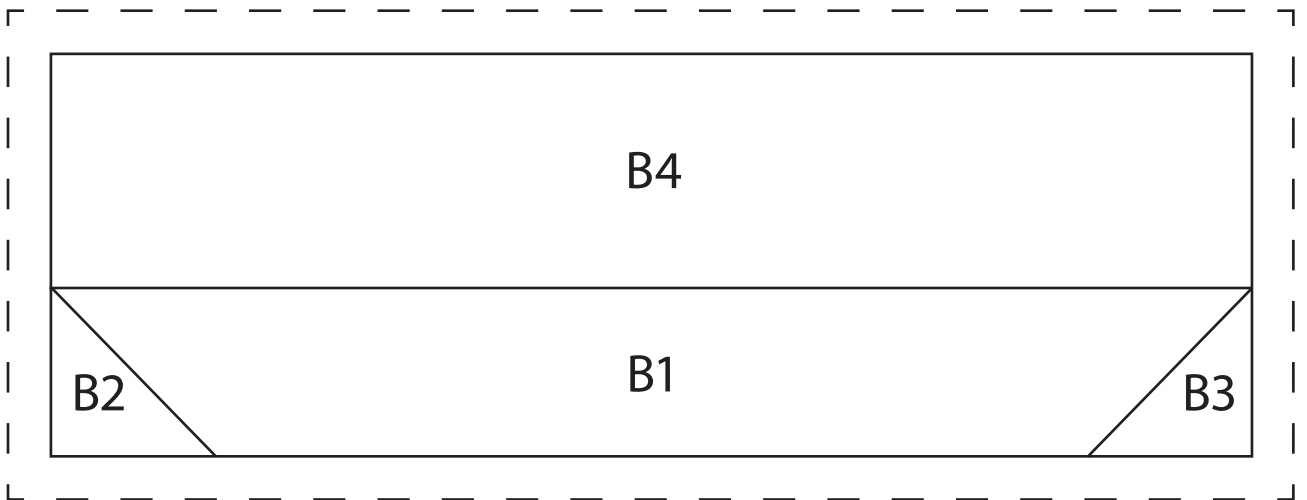


WORKSHOP

FPP TEMPLATE A

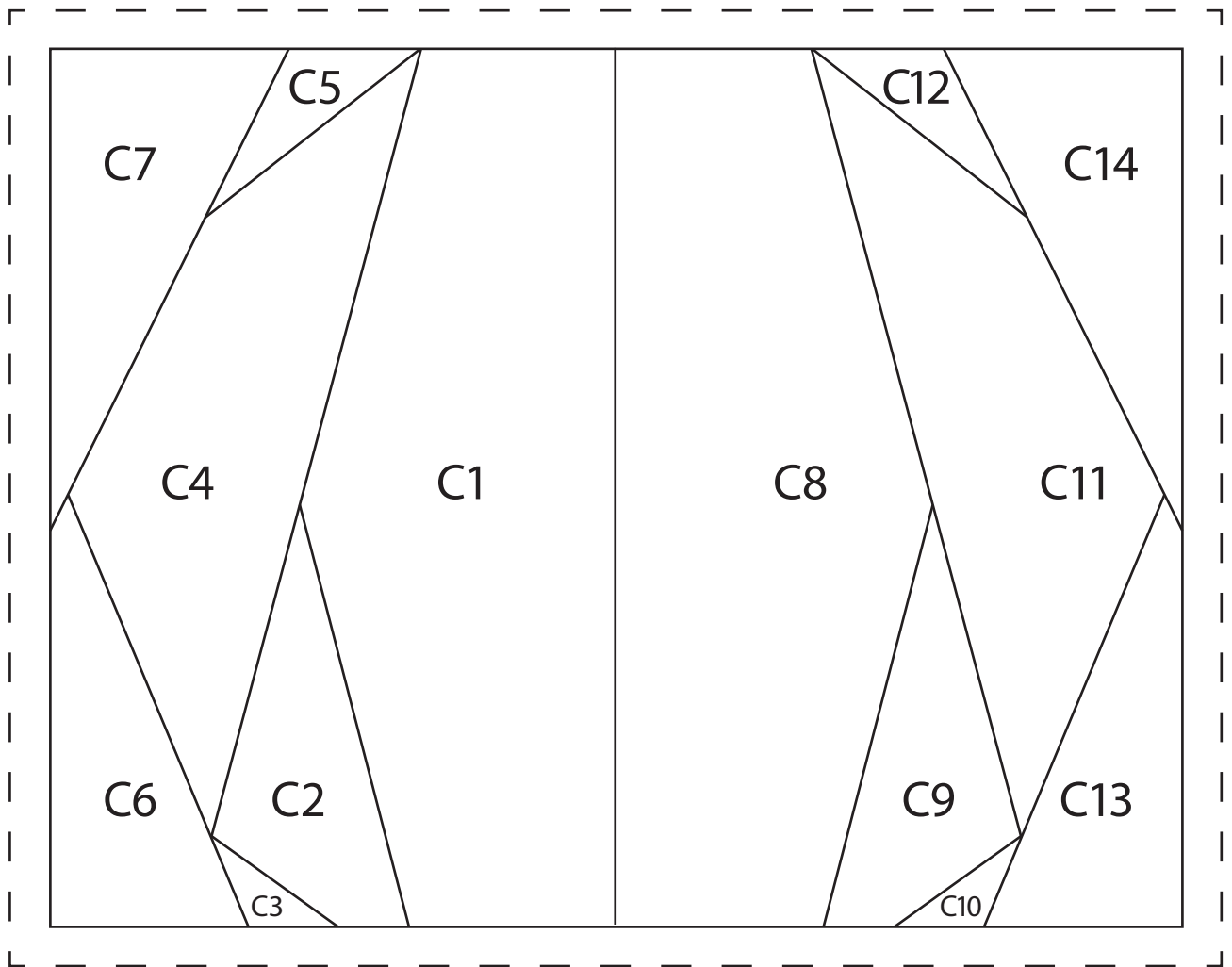


FPP TEMPLATE B

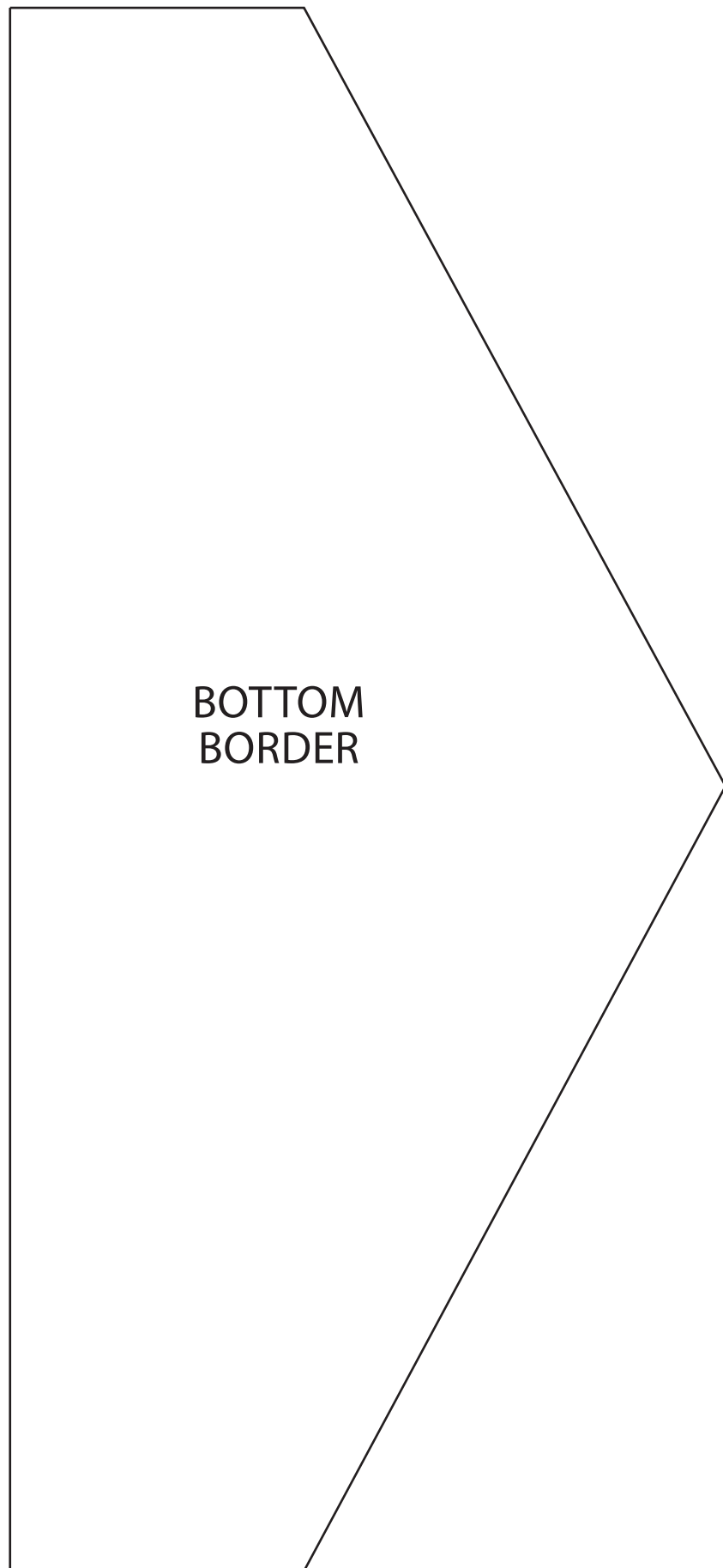


WORKSHOP

FPP TEMPLATE C

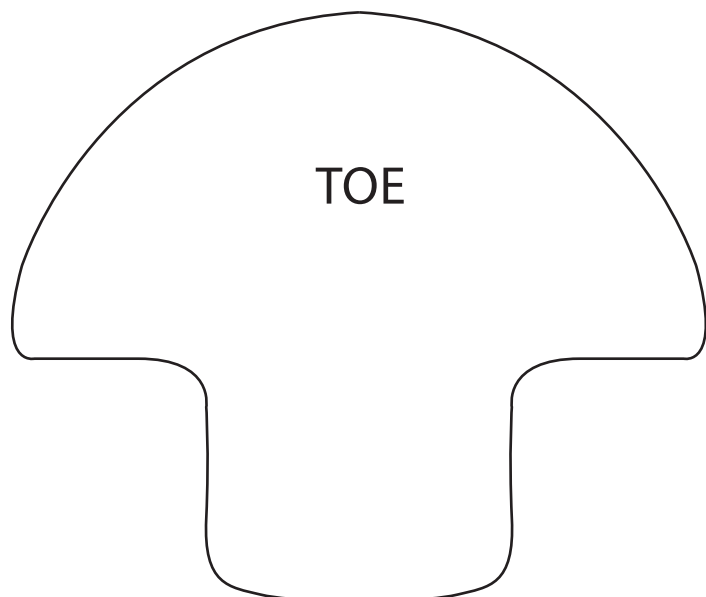
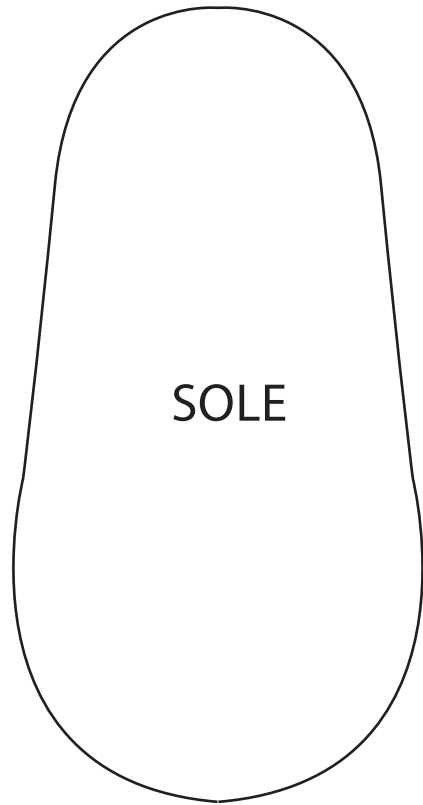
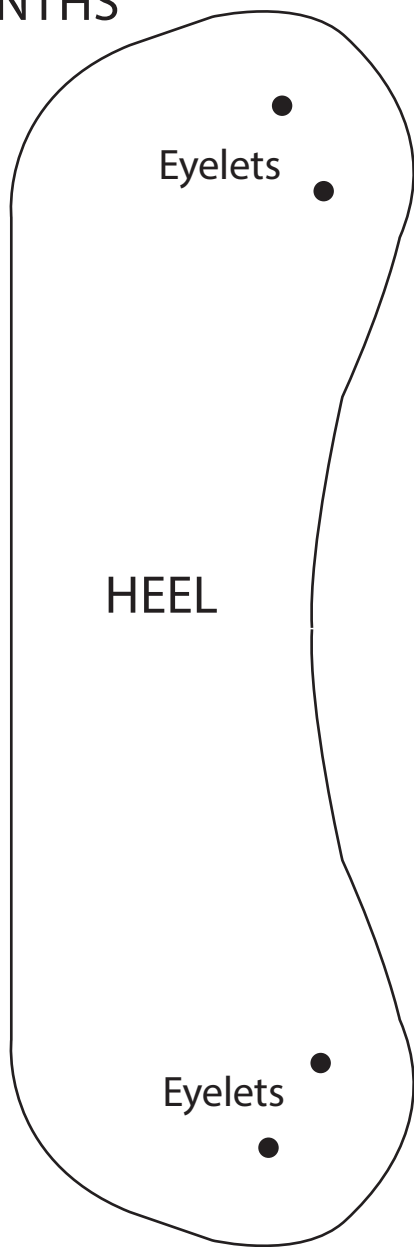


WORKSHOP



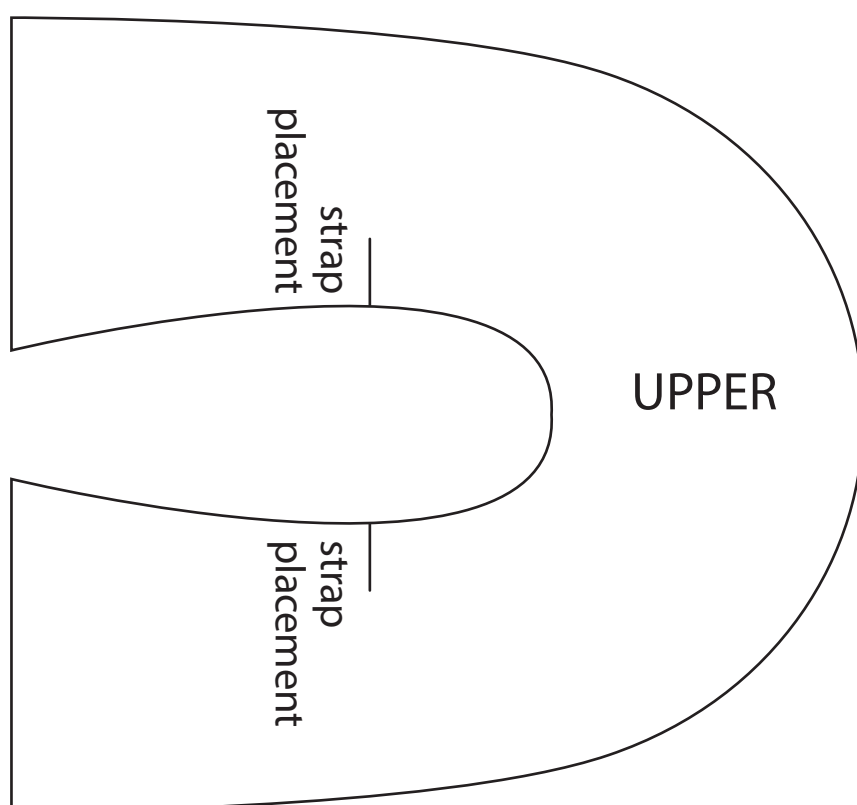
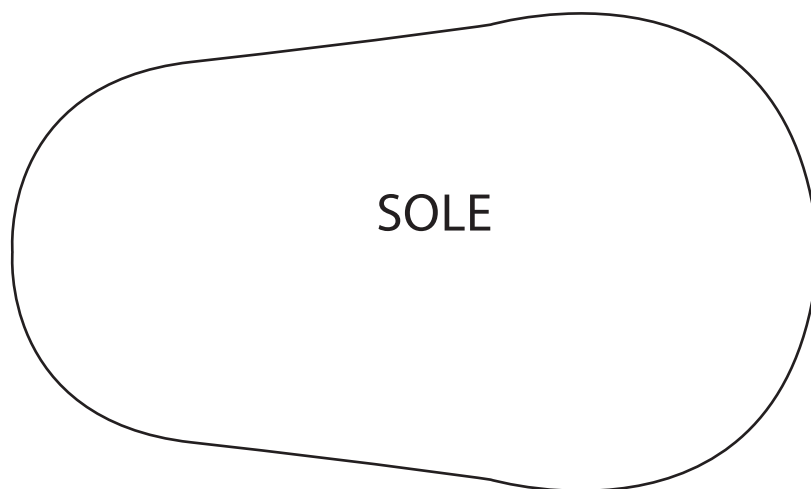
BABY SHOES

LACE-UP SHOES
0-3 MONTHS



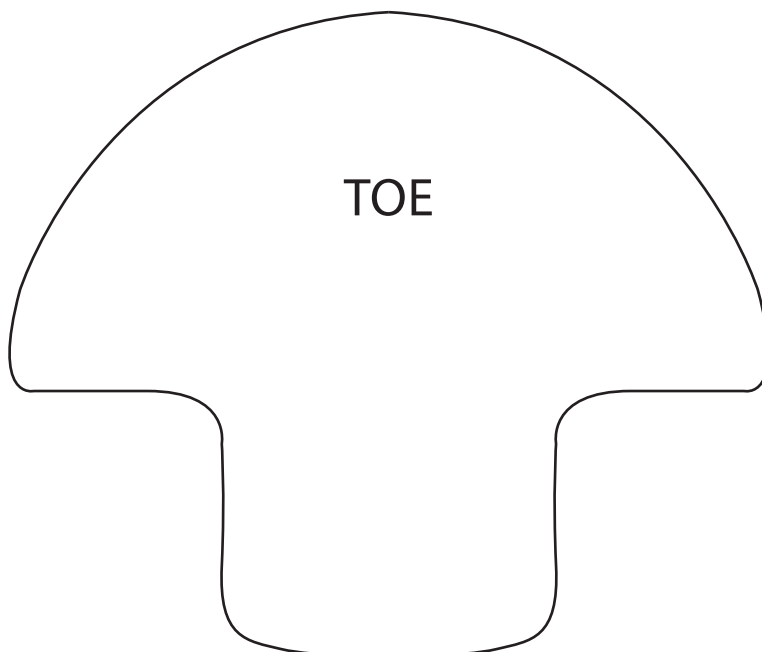
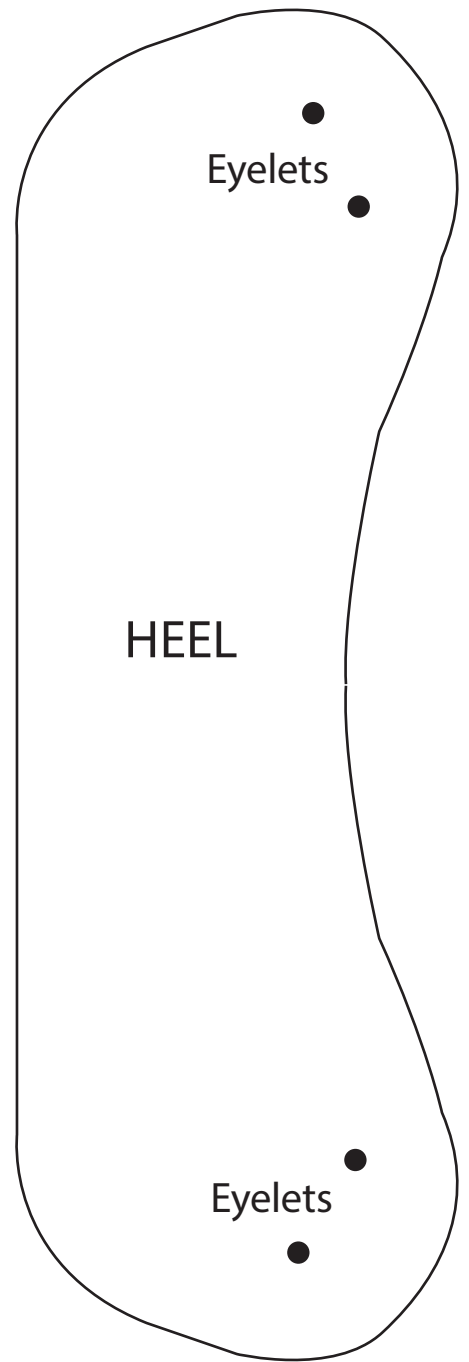
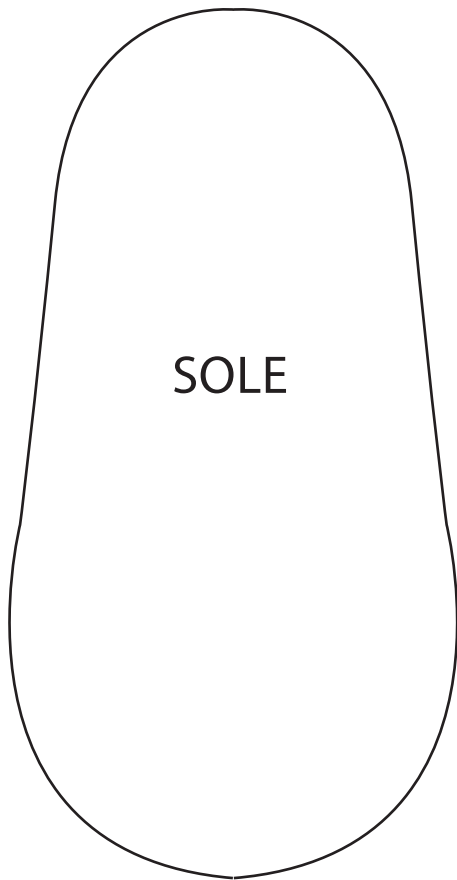
BABY SHOES

MARY JANE SHOES
0-3 MONTHS



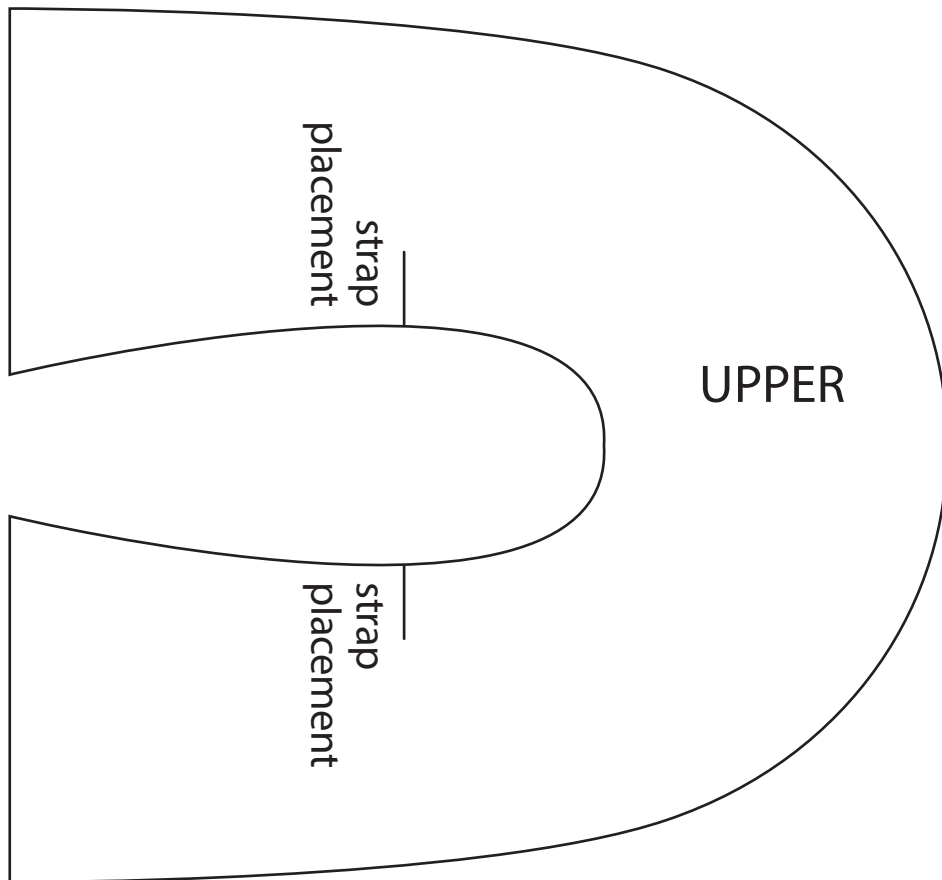
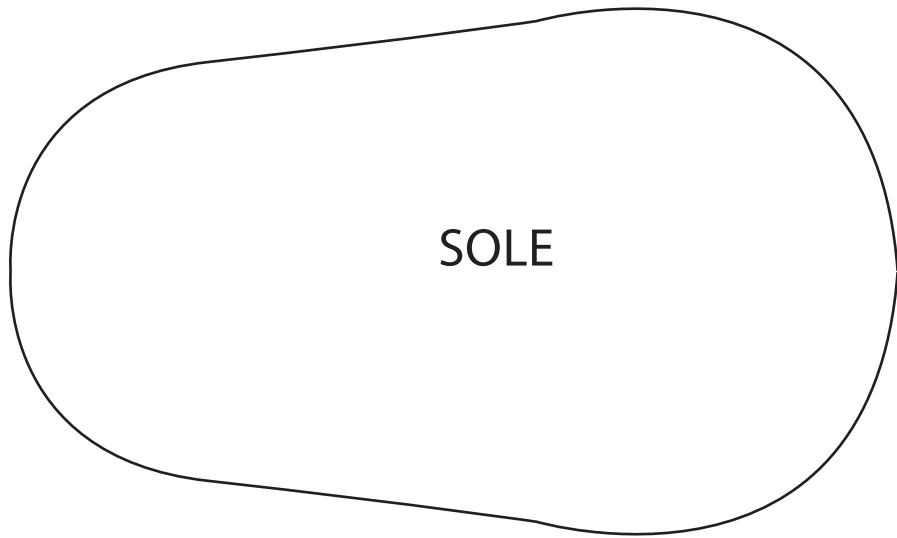
BABY SHOES

LACE-UP SHOES
3-6 MONTHS



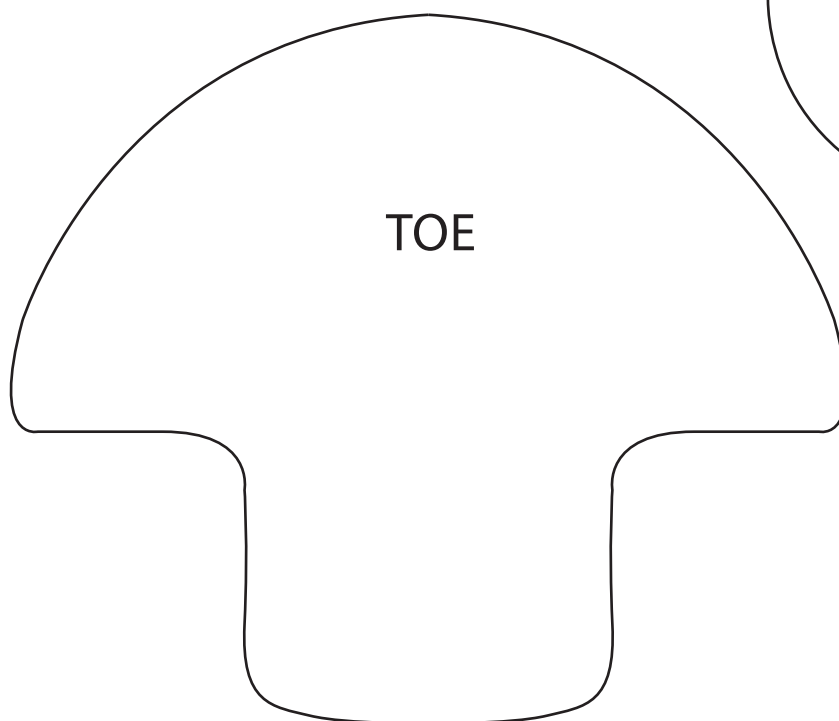
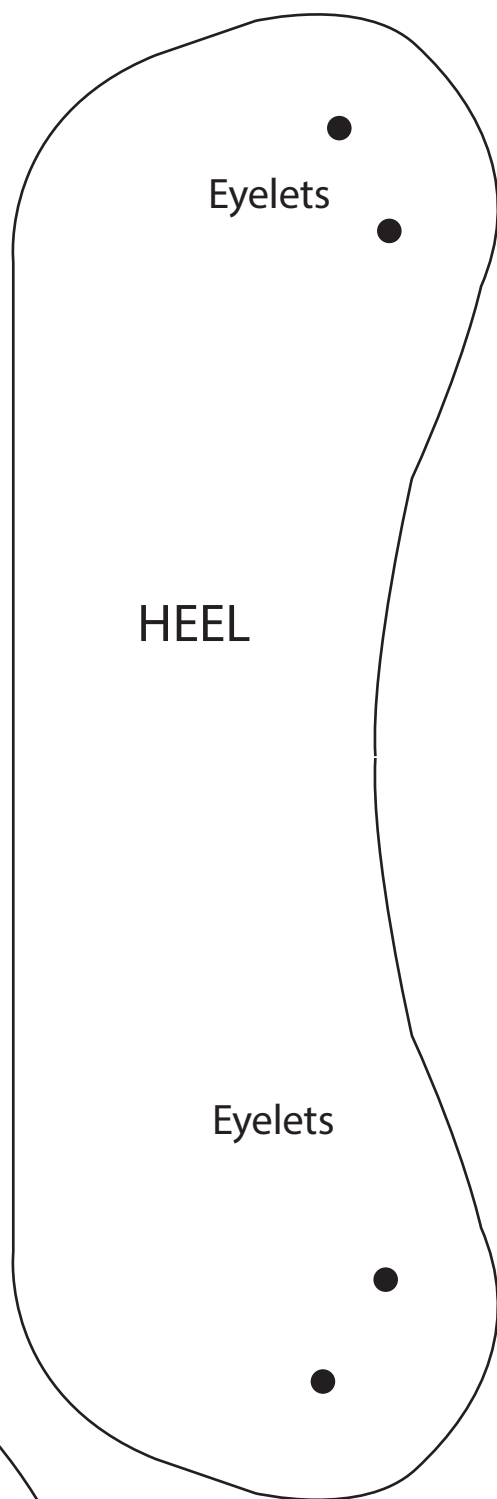
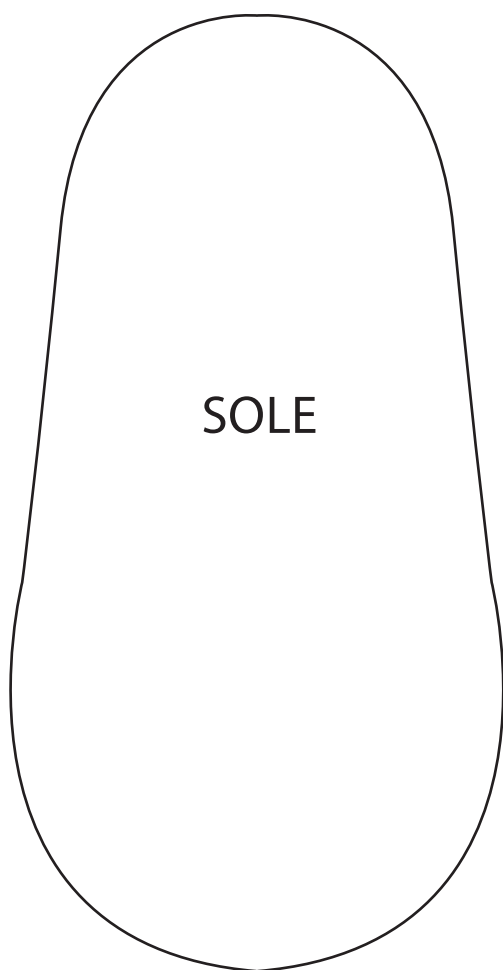
BABY SHOES

MARY JANE SHOES
3-6 MONTHS



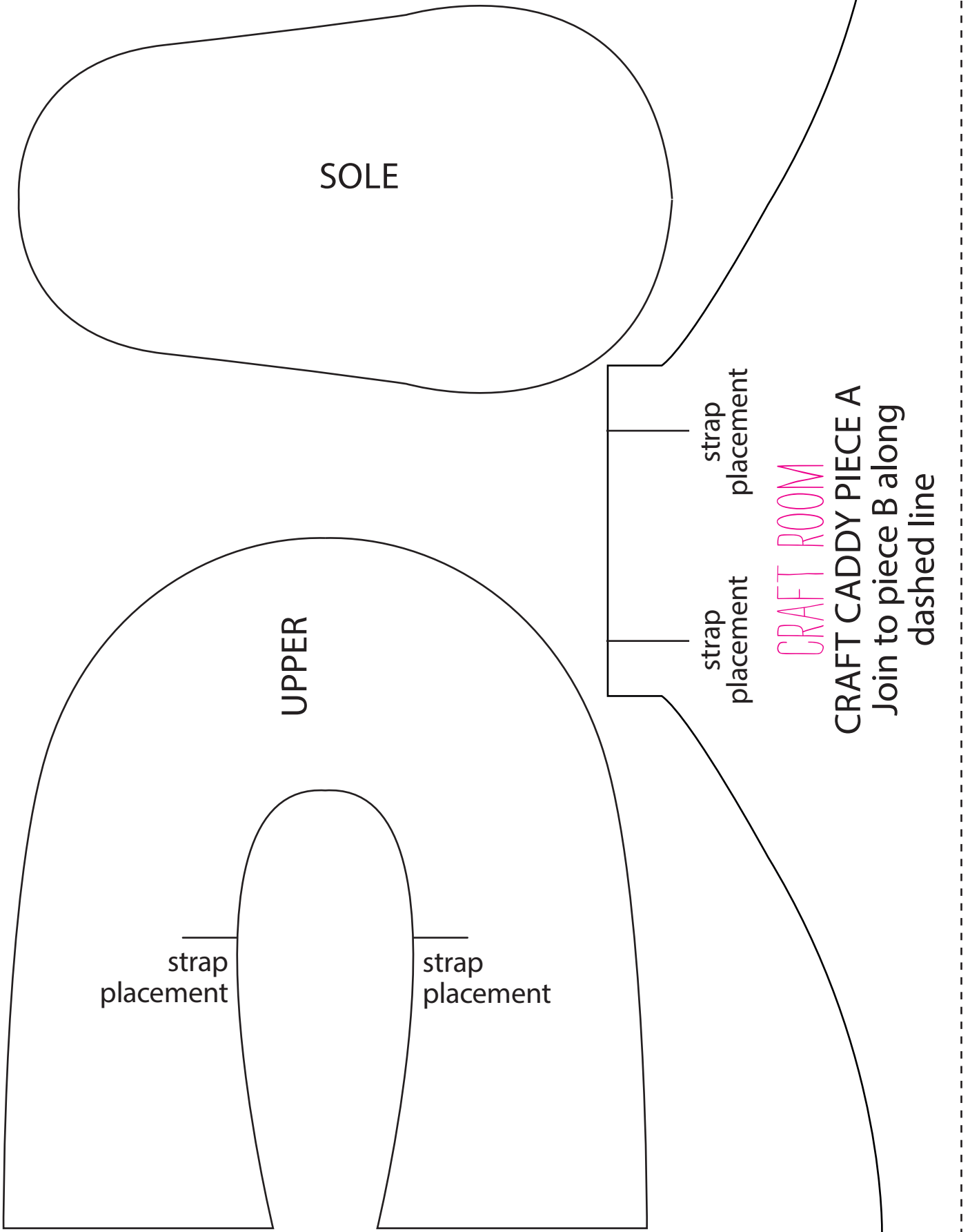
BABY SHOES

LACE-UP SHOES
6-9 MONTHS



BABY SHOES

MARY JANE SHOES
6-9 MONTHS



CRAFT ROOM

CRAFT CADDY PIECE B

Join to piece A along
dashed line

DENIM WALLET

